



ASFALIS TransServer
Installation Guide

November 2020

Elysium Co. Ltd.

Index

1. Overview	1
1.1. About this Manual	1
1.1.1. Network Configuration	1
1.1.2. Server and Client System Requirements	2
1.2. Installation of License Server	3
2. Installation	5
2.1. Fresh Installation	5
2.1.1. Setup of Shared Directory	5
2.1.2. Installation of .NET Framework	6
2.1.3. Installation of Slave Node	7
2.1.4. Installation of PostgreSQL	8
2.1.5. Installation of ASFALIS TransServer	9
2.1.6. Installation of Multiple Slave Node	20
2.2. Upgrade Installation	21
2.2.1. Notes for Upgrading	21
2.2.2. Installation of ASFALIS TransServer	22
2.2.3. Deletion of the Database	25
2.3. Settings after the Installation	25
2.3.1. How to Change the Number of Application Server Instances	25
2.3.2. How to Change the Resource Folder	25
2.3.3. How to Change the License Configuration	26
2.3.4. How to Change the Shared Directory	26
3. Boot Procedure	28
3.1. Slave Node	28
3.2. ASFALIS TransServer	28
4. First Time Configurations	30
4.1. Server Configurations	30
5. Shut Down Procedure	31
5.1. ASFALIS TransServer	31
5.2. Slave Node	31
6. Uninstallation	32
6.1. ASFALIS TransServer	32
6.2. Slave Node	32

Appendix A: Installation of Multiple Slave Node	33
A.1. Install one Slave Node onto Each Computer.....	33
A.2. Install multiple Slave Nodes onto a Single Computer	33
Appendix B: Troubleshooting	34

1. Overview

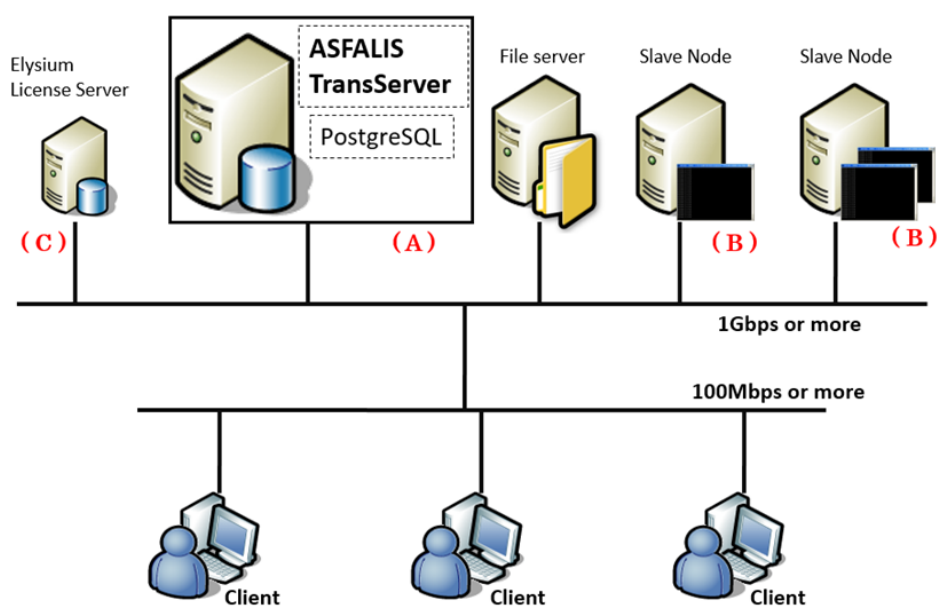
1.1. About this Manual

This manual is for ASFALIS TransServer administrator and contains the following information: how to setup, configure, and manage TransServer system.

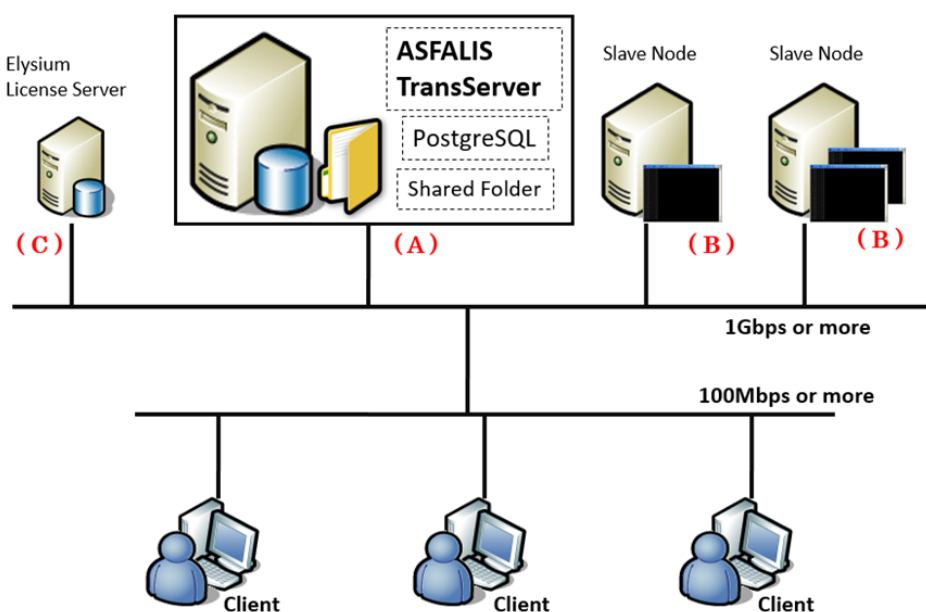
1.1.1. Network Configuration

Below are the recommended network configurations:

Case 1:



Case 2:



Machine(A)	Install ASFALIS TransServer and PostgreSQL
Machine(B)	Install ASFALIS Slave Node
Machine(C)	Install Elysium License Server Elysium License Server can be installed onto machine(A) or machine(B) as well



- ASFALIS TransServer and Slave Node should refer to the same License Server.
- Please ensure that the host name resolution works bi-directionally between ASFALIS TransServer (A) and Slave Node (B).
- All licenses on the referred License Server must be available for the ASFALIS TransServer only. If other Elysium products or other ASFALIS TransServer are set to refer to the same License Server, an error may occur when allocating jobs.

1.1.2. Server and Client System Requirements

Recommended System Requirements

- Server (ASFALIS TransServer)

	Concurrent Connection: Up to 3	Concurrent Connection: 4 - 10
CPU	Equivalent or better than either of following:	
	E5-24xx v2, E5-26xx v2 Series 2.2GHz 4 cores	E5-24xx v2, E5-26xx v2 Series 2.2GHz 8 cores
	E5-26xx v3, E5-26xx v4 Series 2GHz 4 cores	E5-26xx v3, E5-26xx v4 Series 2GHz 8 cores
	Xeon Silver 41xx Series, Xeon Gold 51xx Series 2GHz 4 cores	Xeon Silver 41xx Series, Xeon Gold 51xx Series 2GHz 4 cores
Memory	8GB or more	16GB or more
Network connection	1Gbps or higher	
Number of Application Server instance	10	30
OS	Microsoft Windows Server 2012 RTM Microsoft Windows Server 2012 R2 RTM Microsoft Windows Server 2016	

- Definition of "Concurrent Connection"

This is the total number of sessions that can access to ASFALIS TransServer concurrently (= within three seconds), continuously and repeatedly, while maintaining the response performance, in other words, the total number of "active" users at the same. The total number of active users will change depending on the time of the day, the day of the week, and/or the workload at the time etc. Therefore, please prepare the environment that would accommodate the maximum expected number of concurrent connections.

- About Configuring ASFALIS TransServer in a Virtual Computer

ASFALIS TransServer can also be installed in a virtual computer. However, in that case, please ensure to configure the virtual computer to meet the performance requirement listed in the recommended operating environment. Even in an environment where the virtual host has CPUs, network bandwidth, etc. that meet the system requirement, it is not supported if the resources that can actually be used do not meet the performance requirement, for example, the virtual computer having a limited amount of resource allocation.

- Client

CPU	Core2 Duo E6600 equivalent or better
Memory	1GB or more
Network connection	100Mbps or higher
Browser	Internet Explorer 11 Microsoft Edge Google Chrome

1.2. Installation of License Server

The licenses for Elysium products are managed by "Sentinel RMS License Manager" from SafeNet Corporation.

Please install Sentinel RMS License Manager with the following installer. Please refer to "Sentinel RMS License Manager Setup & Quick Start Guide" listed below for details.

- [Installer of Sentinel RMS License Manager]
<ASFALIS TransServer installation package>\license_server\installer\setup.exe
- [Sentinel RMS License Manager Setup & Quick Start Guide]
<ASFALIS TransServer installation package>
\license_server\document\LicenseServer_QuickStartGuide_en.pdf

Required licenses

Product	License		
ASFALIS Controller	ASF-ELYBATCH	ASF-CTRL1	ASF-CTRL2
ASFALIS TransServer	ASF-SERVER	ASF-TS/S	ASF-SRVR/C
	ASF-API/S (* Required for Batch, Web API, and Folder Monitoring)		

Licenses of both ASFALIS Controller and ASFALIS TransServer are required.

2. Installation

This chapter explains how to install ASFALIS Slave Node and ASFALIS TransServer.

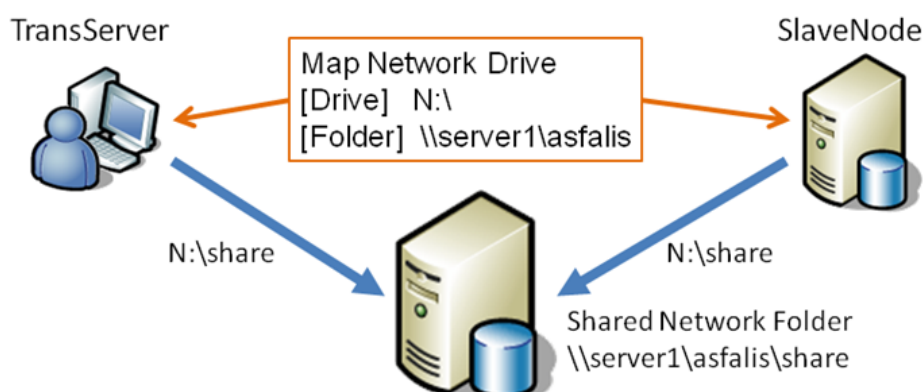
2.1. Fresh Installation

2.1.1. Setup of Shared Directory

The machines where ASFALIS Slave Node is installed and the machines which use ASFALIS Slave Node need to share one directory with the same file path (Ex. N:\share). Below is the explanation on how to set up a shared directory.

Be careful of the followings when you set up a shared directory.

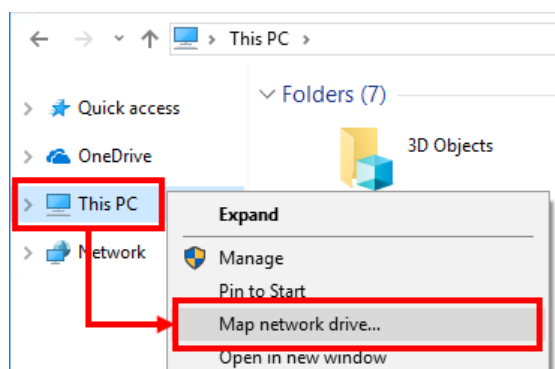
- A shared directory **needs to be assigned in a large-capacity drive** because both the output directory and the work directory for the data processing will be created under this shared directory.
- **UNC path (path starting with "\\") cannot be used** as the shared directory.
- **Root directories of drives (e.g., "C:\") cannot be used** as the shared directory.



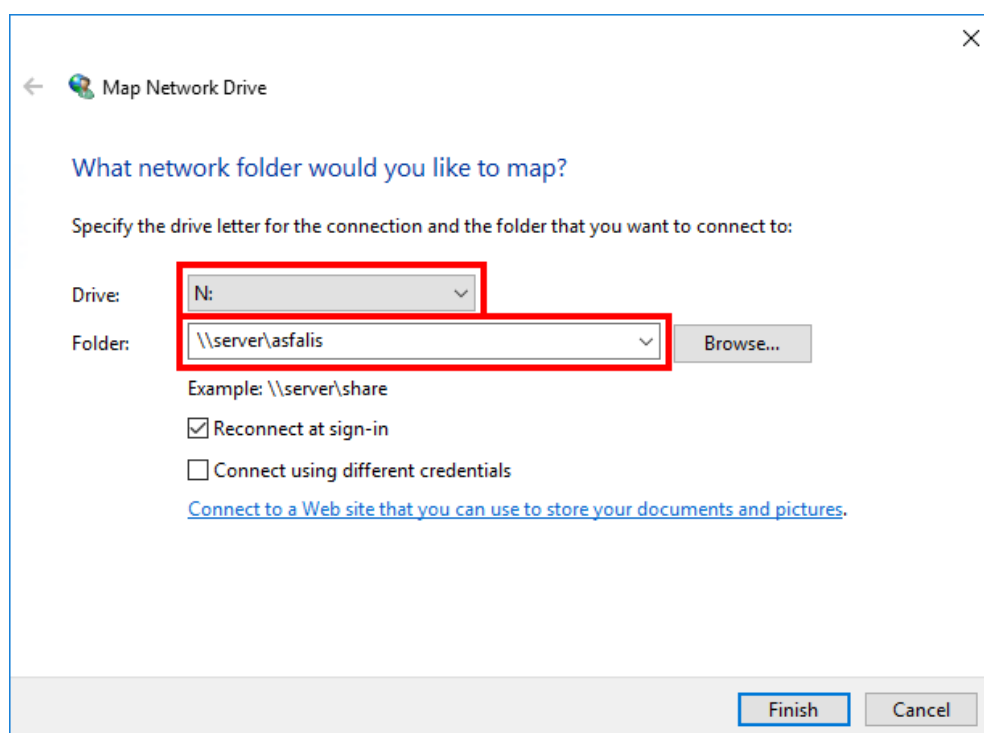
In the example above, the directory <\\server1\asfalis\share> in the machine named "server1" is used as a shared directory. Because UNC paths cannot be used for a shared directory, please change the path <\\server1\asfalis\share> to <N:\share> by assigning the directory <\\server1\asfalis> to N drive ("N:\") and use the path "N:\share" as the shared directory.

How to assign a drive letter to UNC path

1. Right-click on [Computer (or My Computer)] and select [Map Network Drive] from the context menu.



2. Select a drive letter from pull-down menu, enter UNC path in the Folder field and click [Finish] button.



Please perform the above-mentioned setting to all the machines where ASFALIS Slave Node is installed and the machines which uses ASFALIS Slave Node.

2.1.2. Installation of .NET Framework

Please note that with ASFALIS TransServer EX7.1 or later you may need to manually install ".NET Framework" before the installation of ASFALIS TransServer depending on your environment. (It was automatically installed when installing ASFALIS EX7.0 or earlier.) See below and install it if necessary.

1. .NET Framework 4.0 - 4.5.1 is installed

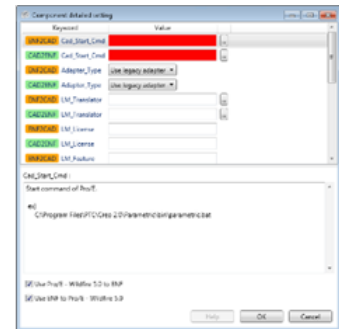
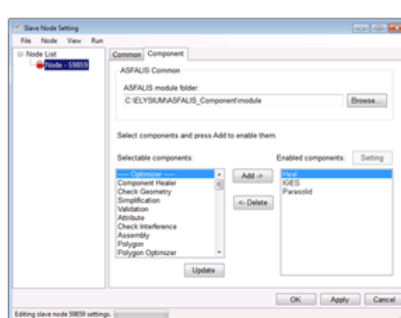
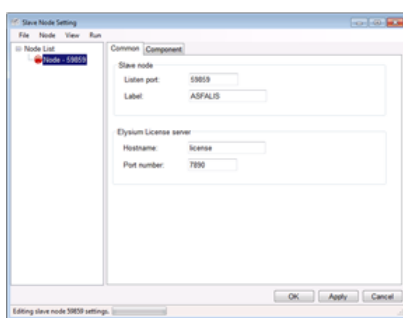
Run the following installer manually to install .NET Framework before the installation of ASFALIS TransServer.

<ASFALIS TransServer installation package>\Runtime\NDP452-KB2901907-x86-x64-AlloS-ENU.exe

2. .NET Framework 3.* or earlier is installed / .NET Framework is not installed
Skip this process, and start the installation of ASFALIS TransServer. .NET Framework 4.5.2 will be installed automatically.
3. .NET Framework 4.5.2 or later is installed
Skip this process, and start the installation of ASFALIS TransServer. An appropriate .NET Framework version is already installed.

2.1.3. Installation of Slave Node

1. Run setup.exe and install ASFALIS Slave Node in accordance with the dialogs appears.
 - <ASFALIS Slave Node installation package>\setup.exe
 - [Installation Guide]
<ASFALIS Slave Node installation package>\SlaveNode_InstallationGuide_en.pdf
2. Set up Slave Node.
 - i. Start the Slave Node Setting dialog (Please replace *** with version number).
Menu: Start > [Elysium ASFALIS Component] > [setup node EX***]
 - ii. Select the name and the version information of the CAD you would like to use by using [Add] button (image in the middle), and input the essential parameter for each CAD in the dialog (image on the right), and then click [Apply] button.



Essential parameter of the main CADs

CAD	Parameter	Configuration example
CATIA V5	Path_Translator	C:\CAD\Dassault_Systemes\B28\win_b64\code\bin
NX	Cad_Install_Dir	C:\CAD\UG\UGNX12.0
Creo Parametric	Cad_Start_Cmd	C:\CAD\PTC\Creo 3.0\Parametric\n\proe1.bat
SOLIDWORKS	None	-

3. Start Slave Node (Please replace *** with version number).
Menu: Start > [Elysium ASFALIS Component] > [start node EX***]

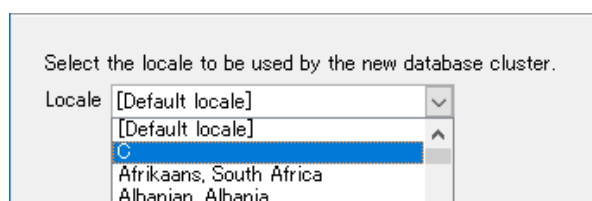
2.1.4. Installation of PostgreSQL

Install PostgreSQL. This version of ASFALIS TransServer supports version 10.* of PostgreSQL. Download the installer of PostgreSQL 10.* from the following page:

<http://www.enterprisedb.com/products-services-training/pgdownload>

1. Install PostgreSQL according to the installer instructions.

- Run the installer after logging in as Administrator.
- Create an installation folder for PostgreSQL in advance where "everyone" has been granted permission to refer to before running the installer.
(e.g., C:\Program Files\PostgreSQL\10)
- Select Components
Please make sure to install both "PostgreSQL Server" and "pgAdmin4".
- Data Directory
The following path is specified by default setting.
C:\Program Files\PostgreSQL\10\data
If data files are stored in a folder under Program Files as default setting, some problems may occur depending on versions of OS. Therefore, create a folder directly under the drive such as the following path and then change the path of Data Directory from default setting to this folder you have created.
e.g., C:\pgdata\10
- Password
Enter the password for PostgreSQL administrator. The string of the password which is set here is described as plain text in the following configuration file.
<ASFALIS TransServer installation folder>\k2dashboard\config\database.yml
- Advanced Options
Select "C" in the Locale pull-down menu.



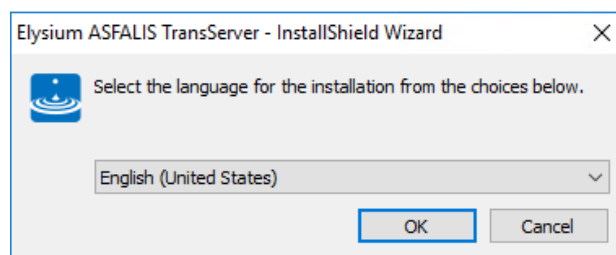
2. After the installation, restart the computer, run Windows Services list, and confirm that the service "postgresql-x64-10 - PostgreSQL Server 10" or "postgresql-x64-10" exist in the list, and then move onto the next step.

- For the service list, press Windows key + [R] key at the same time. Enter "services.msc" in [Run] window and click [OK].
- If the service doesn't exist, it means that the installation of PostgreSQL has failed. Retry installing PostgreSQL till it gets completed. You can refer to Troubleshooting [Appendix B, Troubleshooting](#) at the end of this document or search for information on the internet.

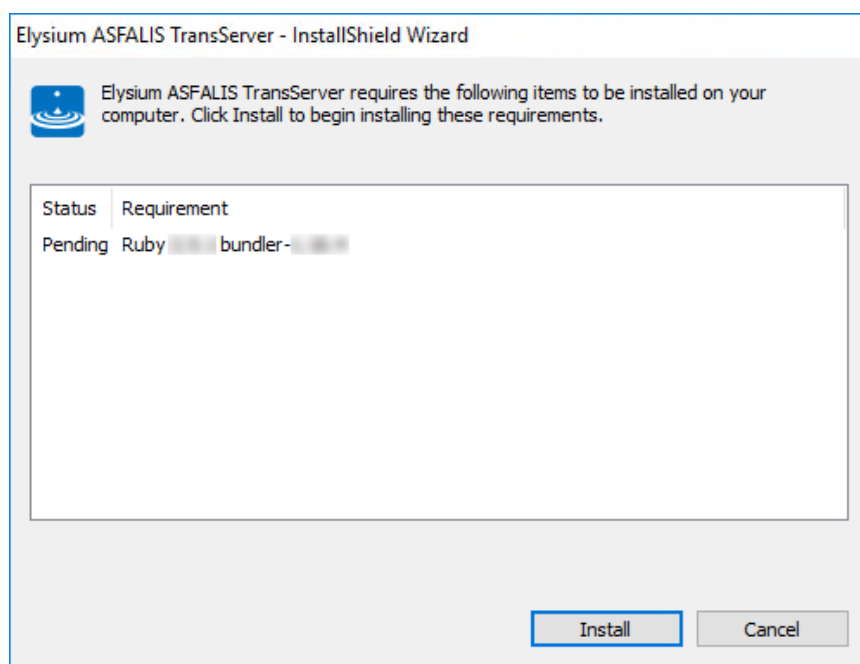
2.1.5. Installation of ASFALIS TransServer

Please install ASFALIS TransServer with the following steps.

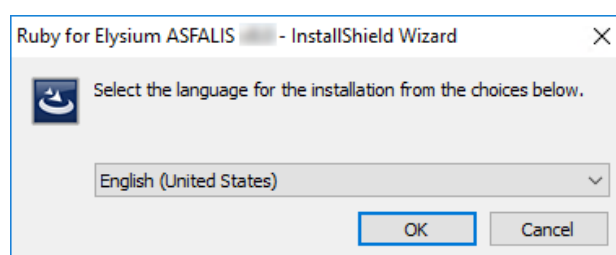
1. Run setup.exe and install ASFALIS TransServer in accordance with the dialogs.
<ASFALIS TransServer installation package>\installer\setup.exe
2. Select the language for the installation and click [OK] button. Japanese and English are available.



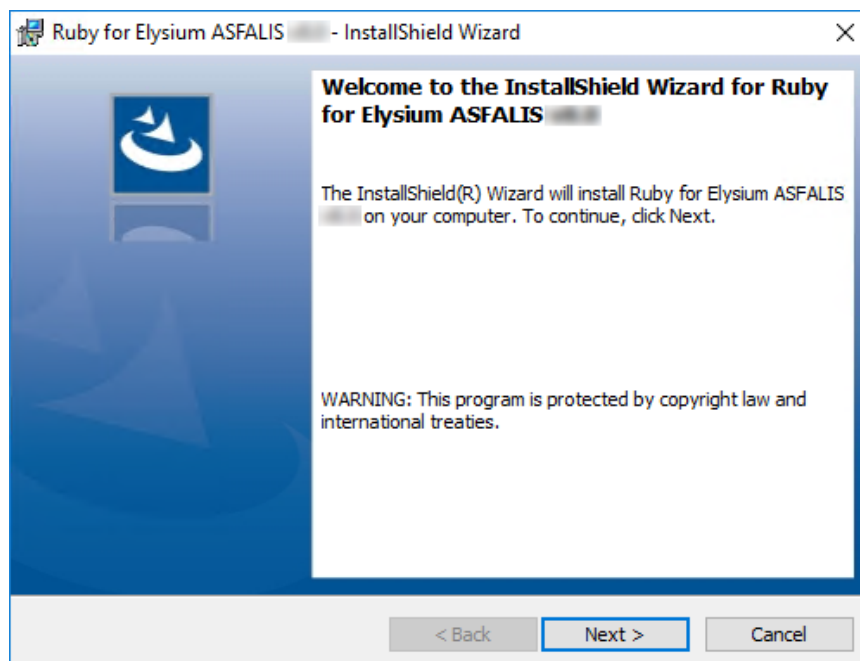
3. If this dialog appears, click [Install] button and install Ruby.
(This dialog will not appear under the environment in which Ruby has already been installed.)



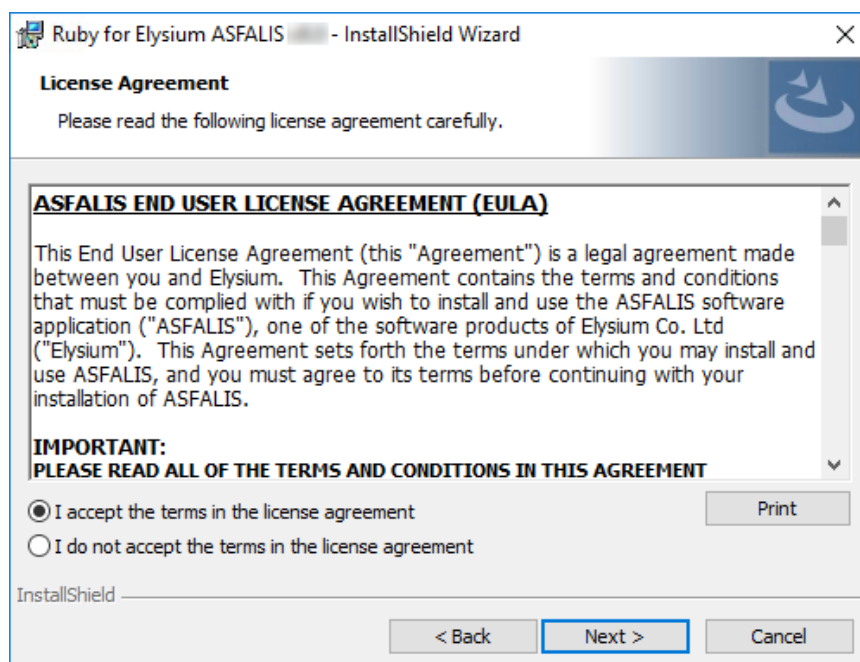
4. The installer of Ruby for Elysium ASFALIS starts. If Ruby for Elysium ASFALIS has already been installed, please go to step 11.
5. Select the language for the installation and click [OK].



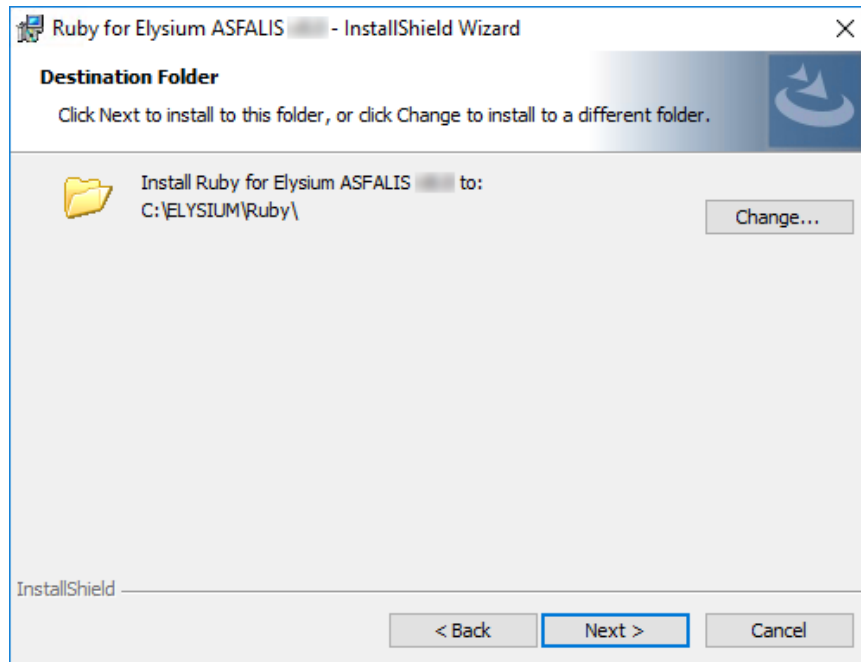
6. Installation wizard starts. Click [Next].



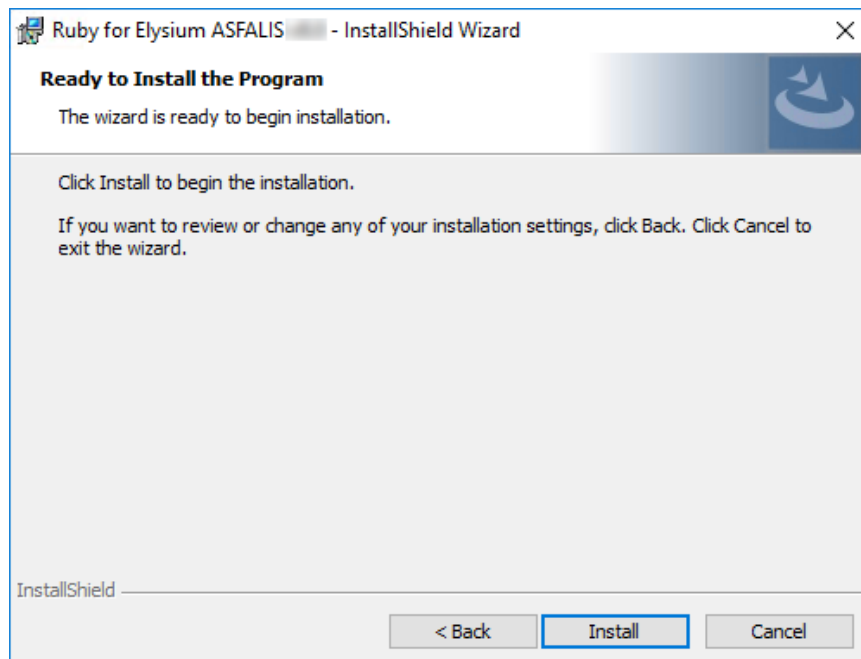
7. "License Agreement" will be displayed. Read through carefully and check "I accept the terms in the license agreement" if you agree, and then click [Next]. It will be enabled only after you have accepted and checked the box.



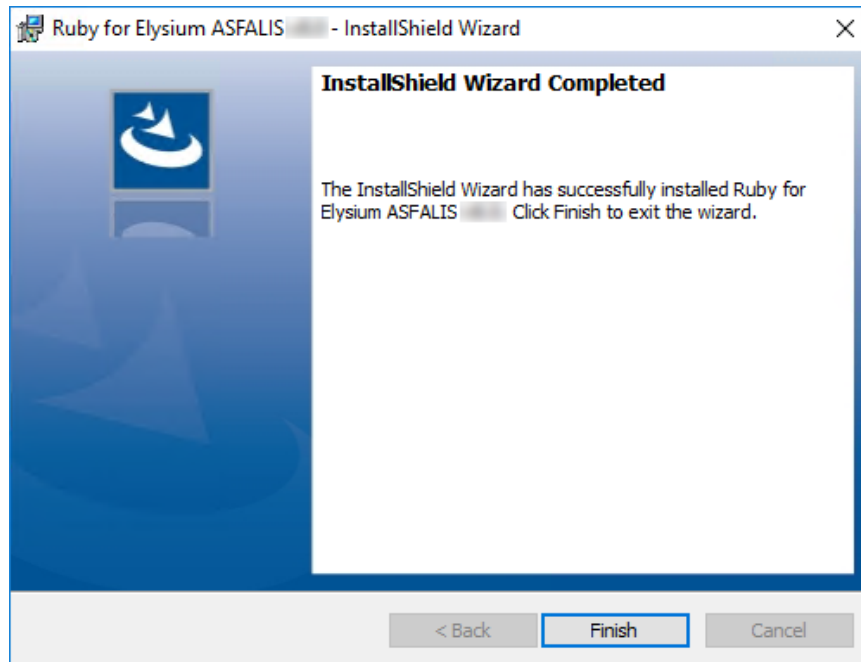
8. The dialog to specify a destination folder appears. If you would like to change the destination folder from the default setting, click [Change] and specify the new destination folder. When the setting finished, click [Next].



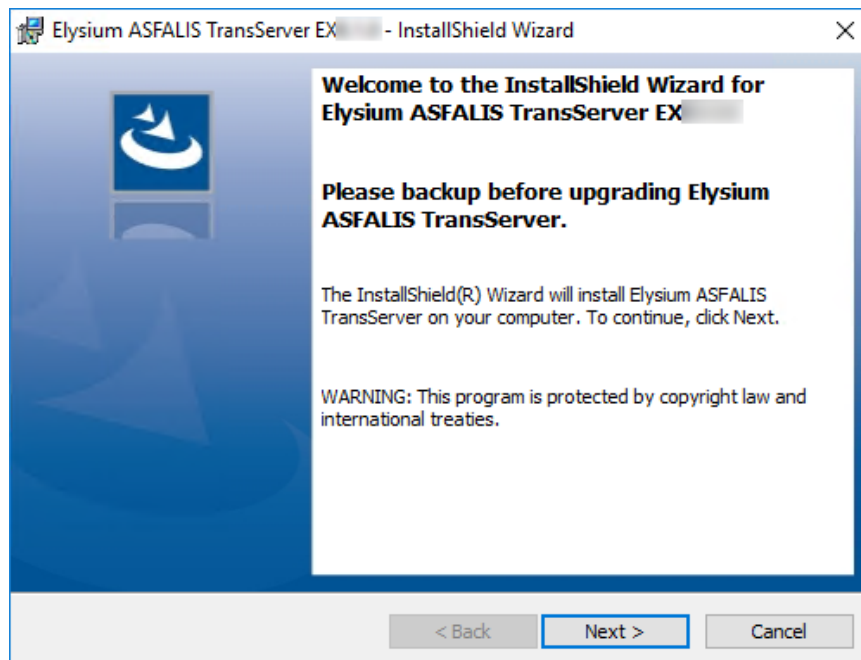
9. Click [Install], then installation starts.



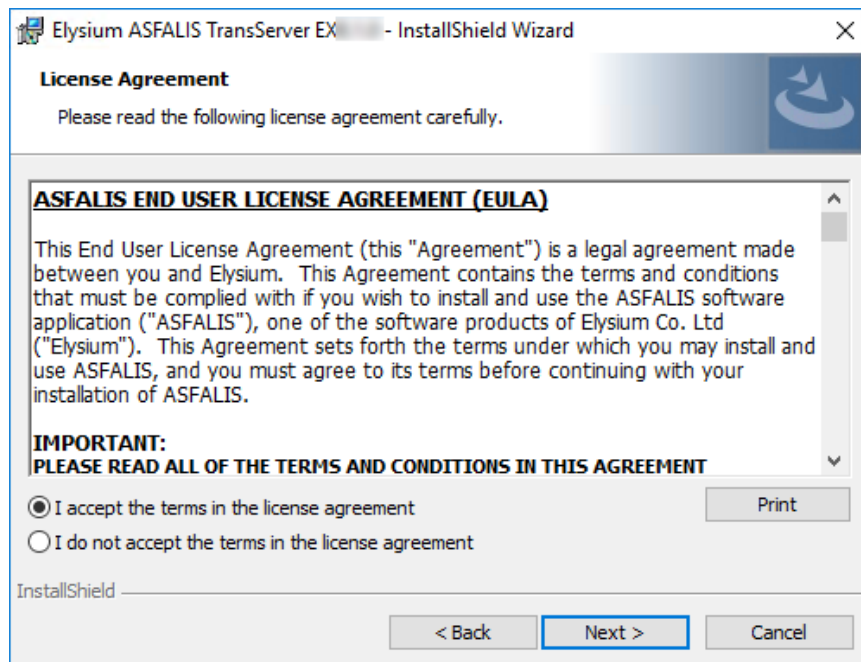
10. When the installation has been completed, the following dialog will appear. Click [Finish]. The installer of Ruby for Elysium ASFALIS finishes, and you will go back to the installer of ASFALIS TransServer.



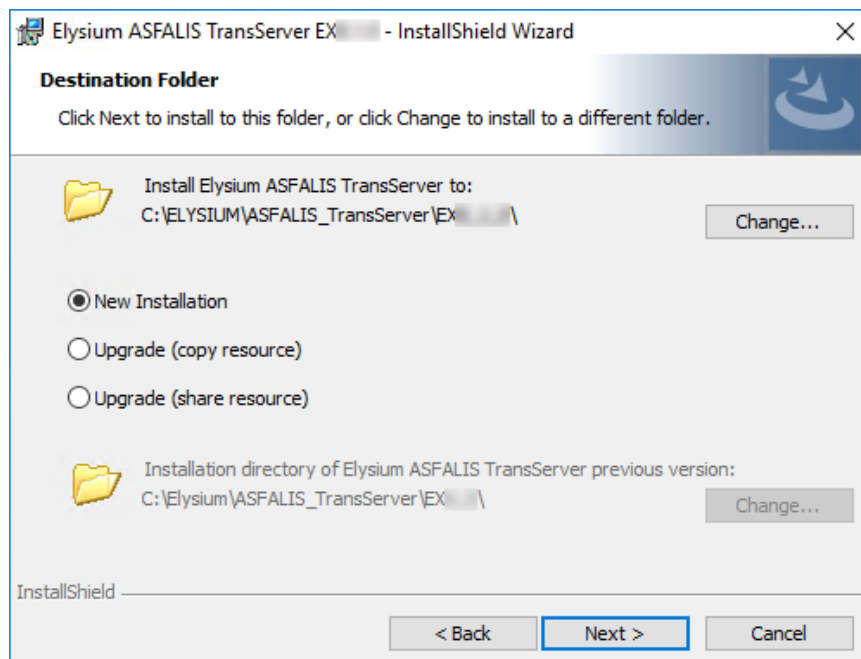
11. After the installation of Ruby, Installation Wizard for ASFALIS TransServer starts. Click [Next].



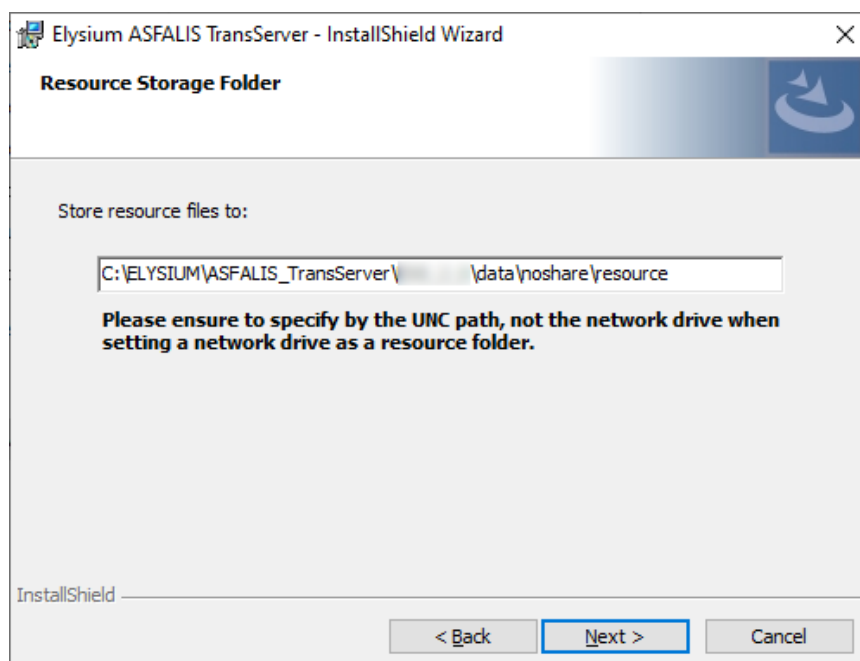
12. "License Agreement" will be displayed. Read through carefully and check "I accept the terms in the license agreement" if you agree, and then click [Next]. It will be enabled only after you have accepted and checked the box.



13. The dialog to specify the installation folder appears. You can change the installation folder from the default setting by clicking [Change] at the upper right and specifying a new folder. Confirm that "New Installation" is selected, and then click [Next].

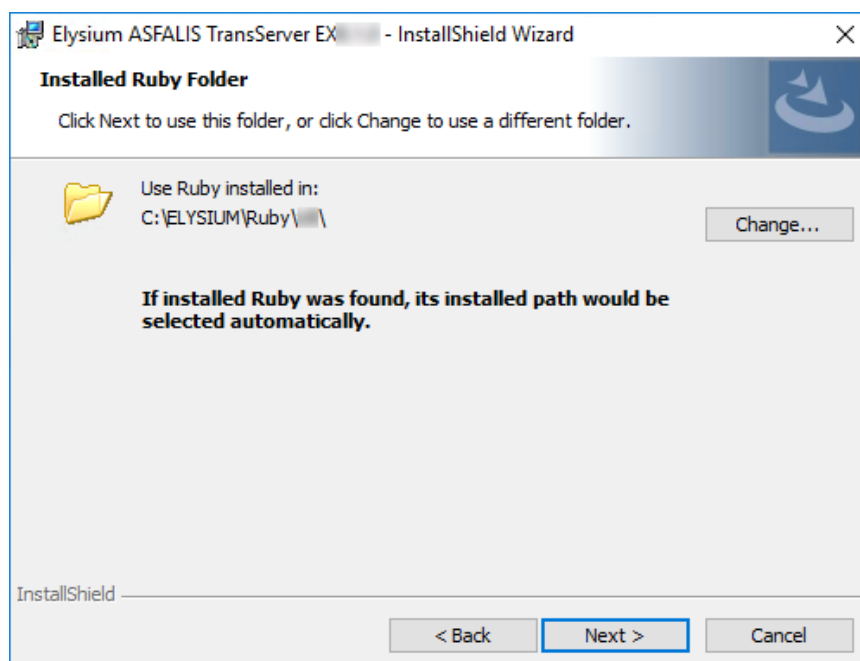


14. Specify a folder to save the resources, and click [Next].

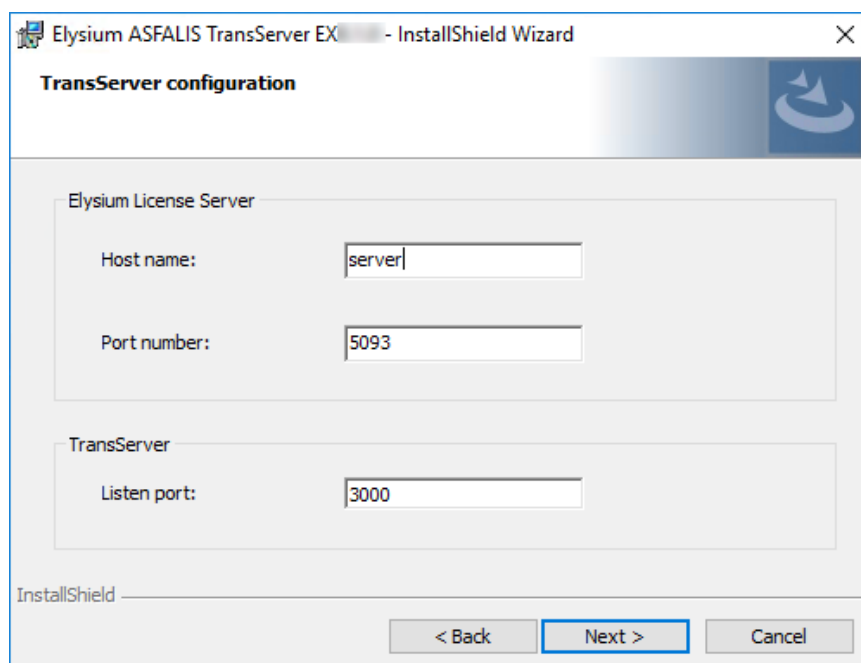


Please ensure to specify either the local drive path or UNC path as the resource folder. Avoid specifying a path which includes a network drive (For example, N:\(transserver\resources) because ASFALIS TransServer may not run properly.

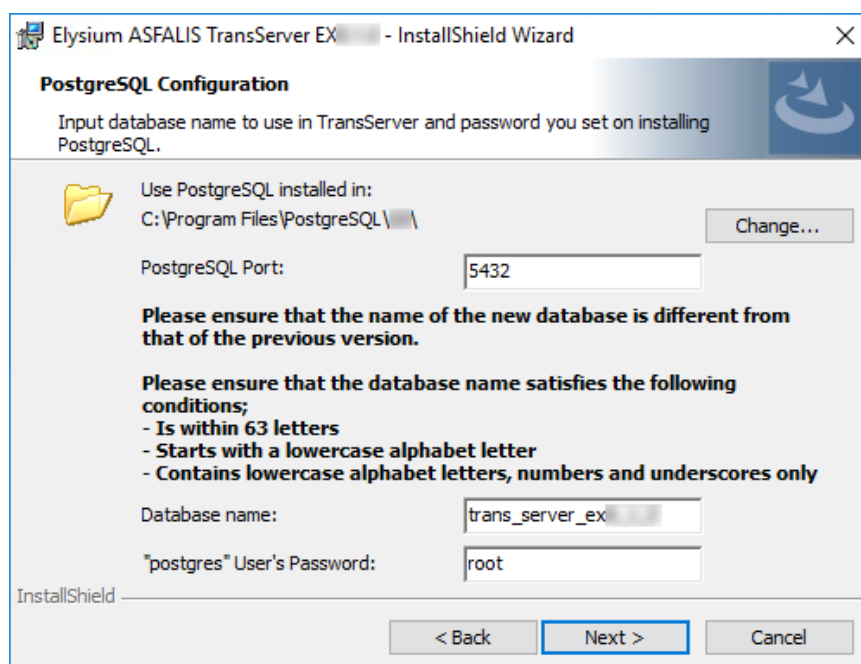
15. Specify a destination folder for Ruby and click [Next].



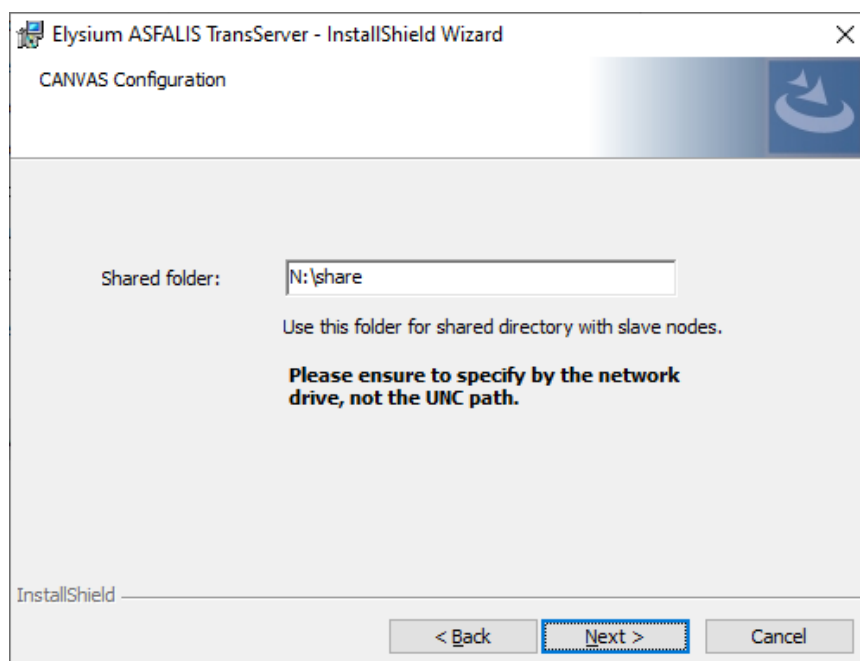
16. Specify the "host name" and the "port number" of Elysium License Server and the "listen port" of ASFALIS TransServer. You should specify the same License Server as Slave Node. Click [Next] once completed.



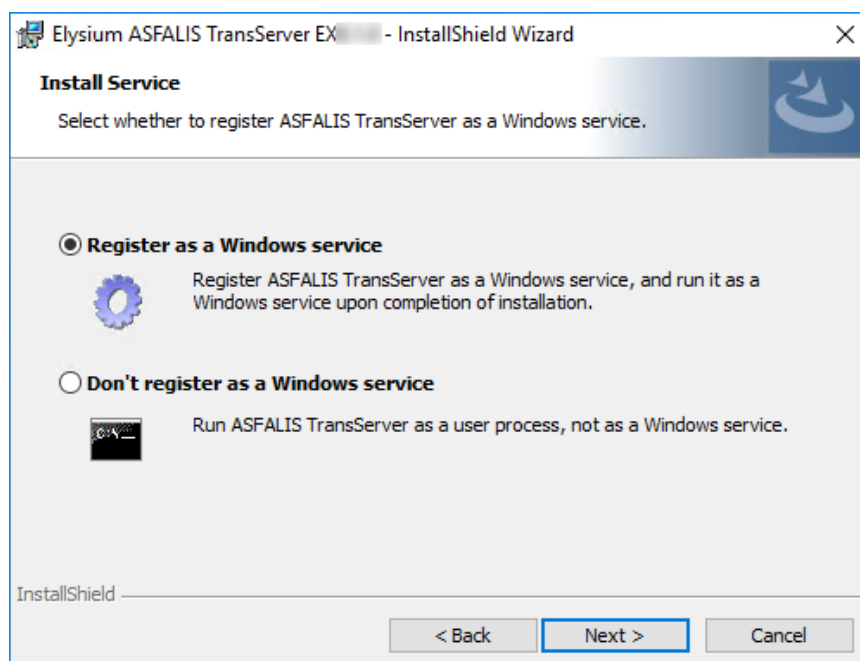
17. Enter the name of the database and the password you set in the installation of PostgreSQL. In the default setting, the string "trans_server***" is entered as the database name (*** is the version of PostgreSQL). You do not need to change this name as long as this is the first time installation. If not, and the previous database has not been deleted, enter a unique name that has not been used before.



18. Specify the "Shared Directory" that you have set at 2.1.1, "Setup of Shared Directory" (e.g., N:\share)



19. Select whether to register or not as Windows service. If you select [Register as a Windows Service], go to step 20. If you select [Don't Register as a Windows Service], go to step 22.





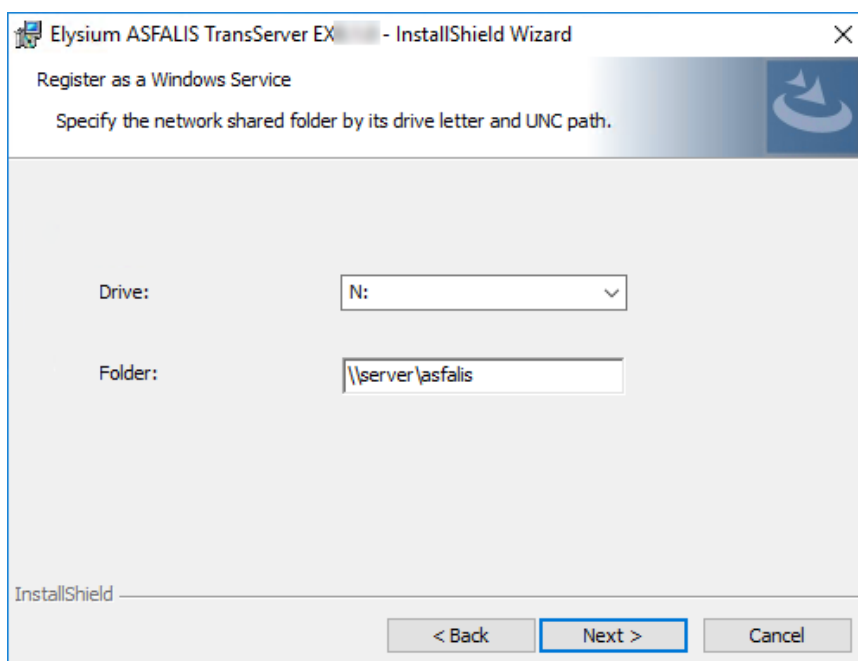
When you register ASFALIS TransServer as Windows service, it will automatically start when the computer is booted. Therefore, the user does not have to interactively log on to the computer and start it.

When you don't register ASFALIS TransServer as Windows service, the processing information will be output to command prompt, so if an error occurs, you will have more information.

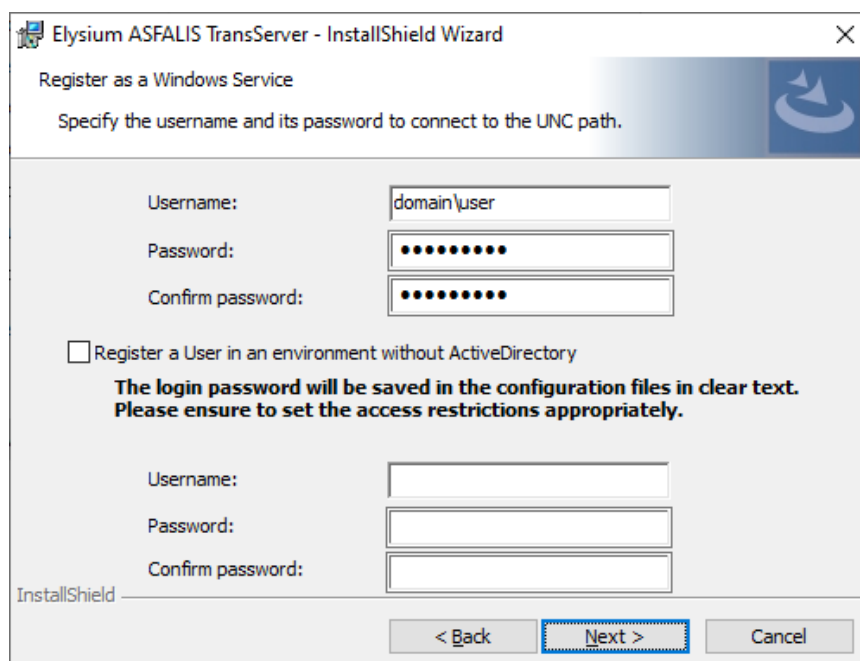
An example of a usage would be to use the service for normal operation of ASFALIS TransServer, and when a problem occurs which needs to be investigated or tested temporarily, interactively start it.

Depending on the purpose of use and assumptions, please select the appropriate method.

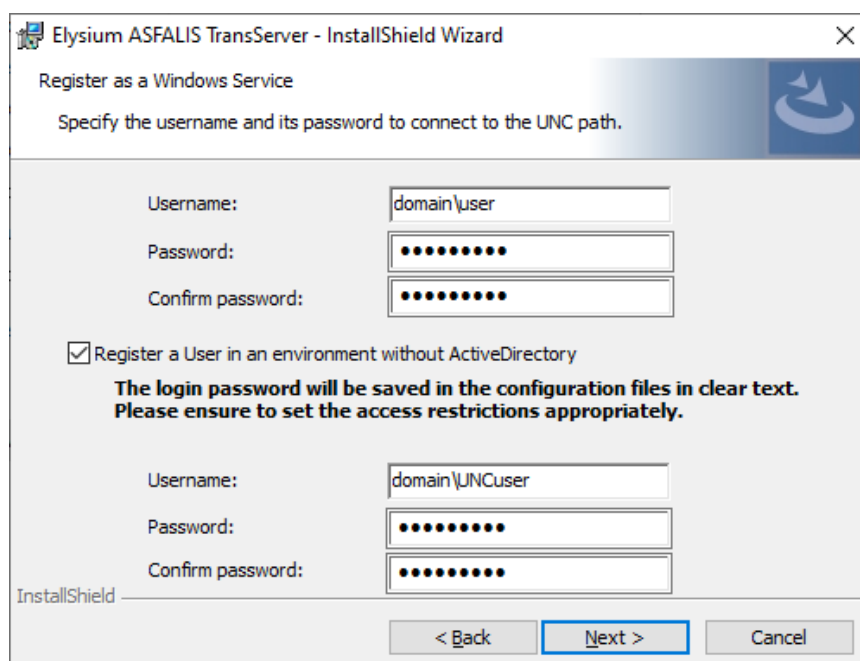
20. Specify the same contents as you have set at 2.1.1, “[Setup of Shared Directory](#)” and click [Next].



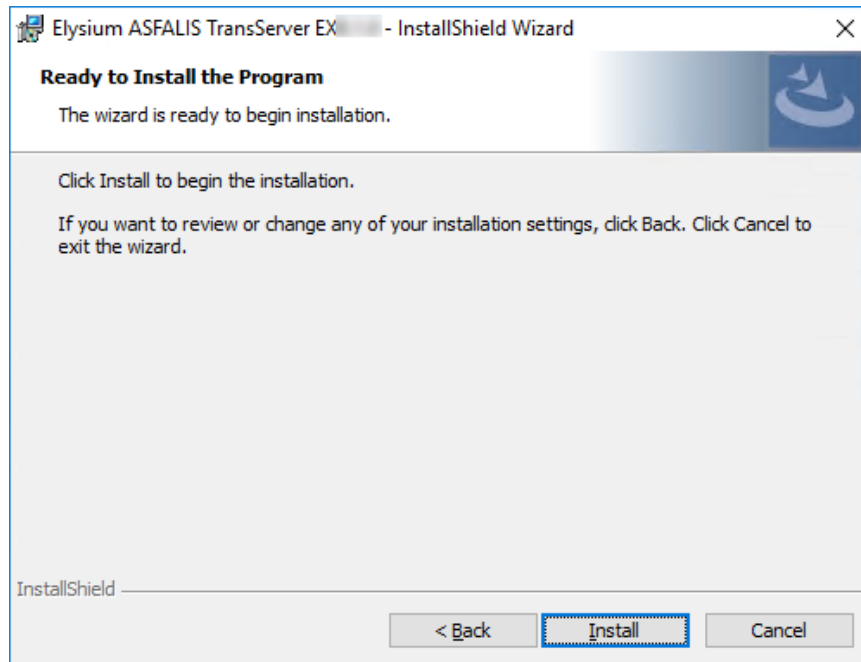
21. Enter the name and password of a user who can read and write the specified shared folder, then click [Next]. When specifying a user registered in Active Directory, leave the input field at the bottom of the screen blank.



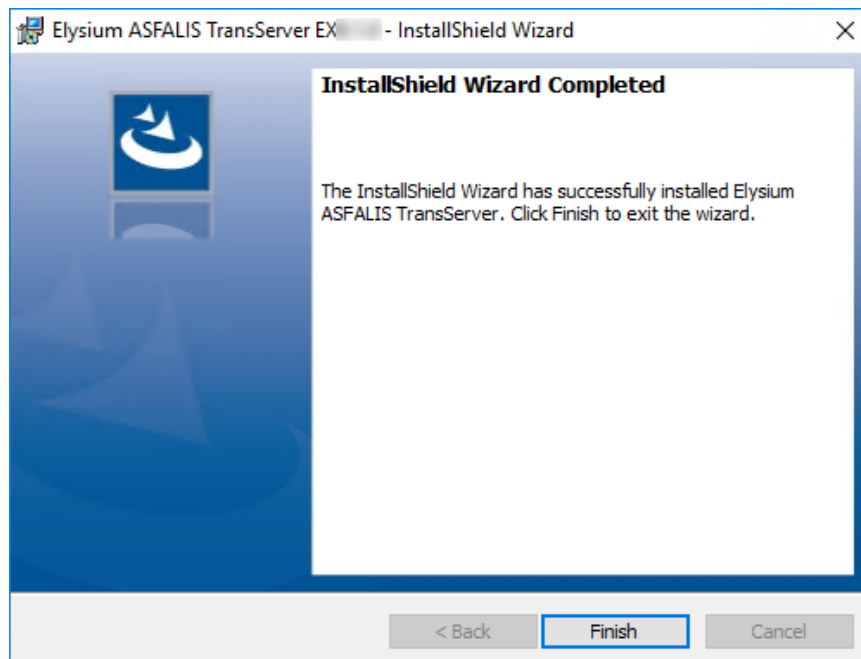
When installing in an environment without Active Directory or when using a user not registered in Active Directory, check the option "Register a User in an environment without Active Directory", and enter the username and password of a user authorized to access the UNC path in the input field at the bottom of the screen.



22. Click [Install], and the installation starts.



23. When the installation has been completed, the following dialog appears. Click [Finish].



24. If you register ASFALIS TransServer as Windows Service, open Windows service to confirm "ASFALIS TransServer EX*.*" service (*.* is the version number). If you've confirmed that the service exists and is running, you have succeeded the installation.

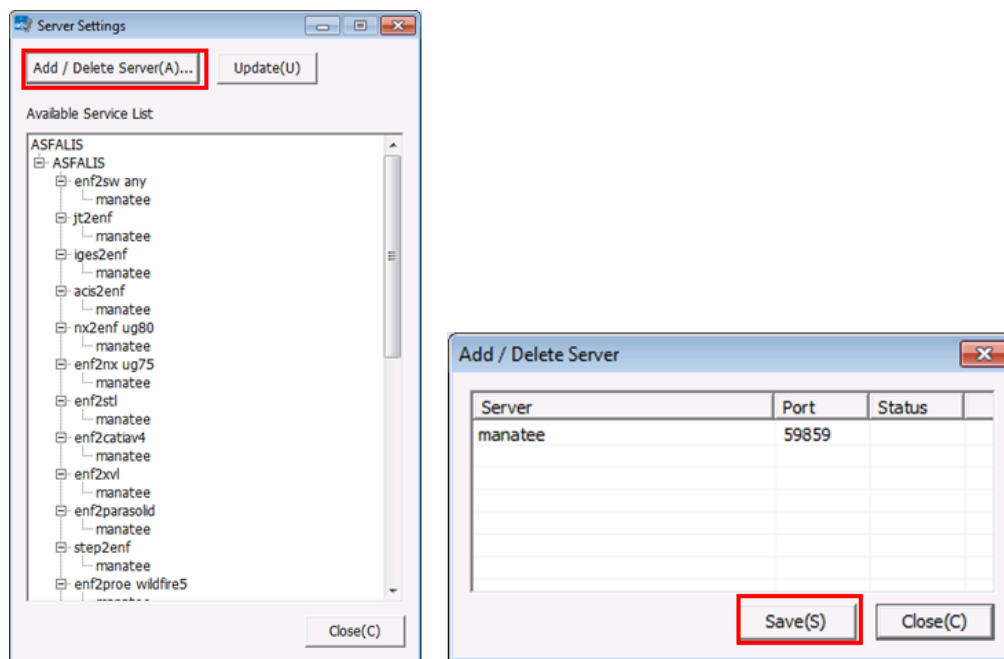


For the service list, press Windows key + [R] key at the same time. Enter "services.msc" in [Run] window and click [OK].

25. Set Slave Node.

- i. When you select [Start] > [All Programs] > [Elysium TransServer] > [Slave Node Configuration EX***], the following dialog appears (Please replace *** with version number).

- ii. Click [Add / Delete Server] button and add the server (Slave Node).
- iii. Click [Save] button once done. And then click [Close] button.



26. Allow the programs to communicate through Windows Firewall.

- i. Open [Control Panel] > [System and Security] > [Windows Firewall].
- ii. In the left pane, click "Allow a program or feature through Windows Firewall."
- iii. Click [Change settings], and add the following programs to the list of allowed programs.

Ruby :

<Ruby installation folder>\v9\rubies\ruby-2.6.5\bin\ruby.exe
(e.g. C:\ELYSIUM\Ruby\v9\rubies\ruby-2.6.5\bin\ruby.exe)

Apache HTTP Server :

<ASFALIS TransServer installation folder>\Apache<Version>\Apache24\bin\httpd.exe

- iv. Click [OK] button.

27. Give "Full Control" permission on the installation folder of ASFALIS TransServer to the user who executes ASFALIS TransServer.

2.1.6. Installation of Multiple Slave Node

Please refer to [Appendix A, Installation of Multiple Slave Node](#) at the end of this document.

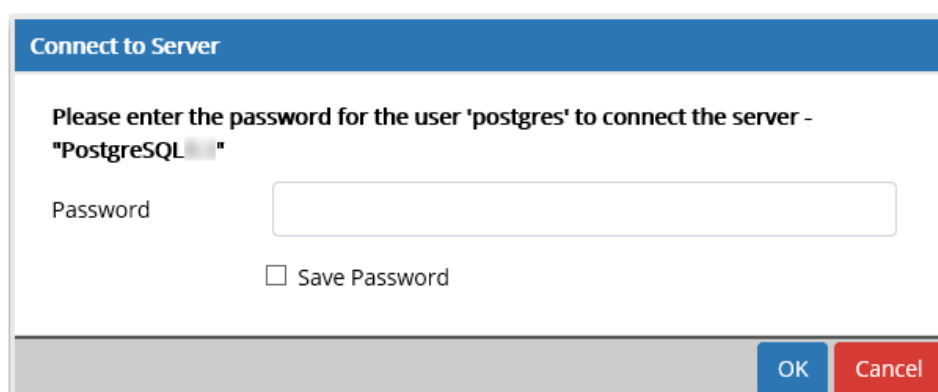
You need to adjust the maximum number of the concurrent connections to PostgreSQL when you specify more than five Slave Nodes. Regarding instruction on the setting, please refer to "Configuring Max Concurrent Connections to Database" of "Manual for Administrator."

2.2. Upgrade Installation

This chapter explains how to upgrade ASFALIS TransServer.

2.2.1. Notes for Upgrading

- The installer of ASFALIS TransServer EX8.3.2 supports the upgrade only from EX8.1 or later. If you are currently using ASFALIS TransServer EX8.0.x or former, please upgrade to EX8.1 before the installation of EX8.3.2.
- When you perform an upgrade installation, all the data and the settings will be kept as they are.
- Upgrading does not affect the previous environment. However, just in case, please back up ASFALIS TransServer before upgrading. Regarding the backup, please refer to "6 Backup & Restore" of "Manual for Administrator."
- A password needs to be specified in the file "%APPDATA%\postgresql\pgpass.conf" in advance.
 1. Start pgAdmin 4: Select Windows [Start] > [PostgreSQL 10.*] > [pgAdmin 4]
 2. Double-click PostgreSQL 10.* (localhost:5432, if it was installed by default settings) in the Object browser. Enter the password and check the checkbox "Store password" in the "Connect to Server" dialog, and then click [OK] button.



- If the password has already been stored, the "Connect to Server" dialog will not appear.
3. Close pgAdmin 4. You must close pgAdmin 4 before installing ASFALIS TransServer.
- Please ensure to stop ASFALIS TransServer before performing an upgrade installation.
 - When an earlier version of ASFALIS TransServer is registered as service, stop ASFALIS TransServer service and change its "Startup type" to "Manual" beforehand. This is to avoid the situation that multiple versions of ASFALIS TransServer services are running in parallel. Follow the steps below:
 1. Press Windows key + [R] key at the same time. Enter "services.msc" in [Run] window and click [OK].
 2. Stop "ASFALIS TransServer Service EX****" service (Please replace *** with version

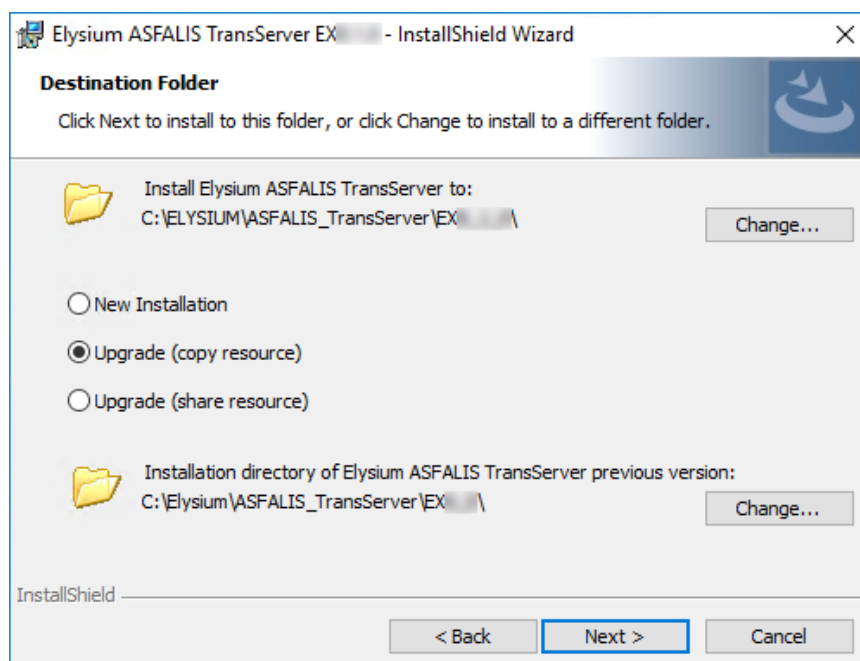
number).

3. Open the property of "ASFALIS TransServer Service EX ****" service and change "Startup type" to "Manual".
4. Click [OK] to close the property window.
5. Perform upgrade installation.

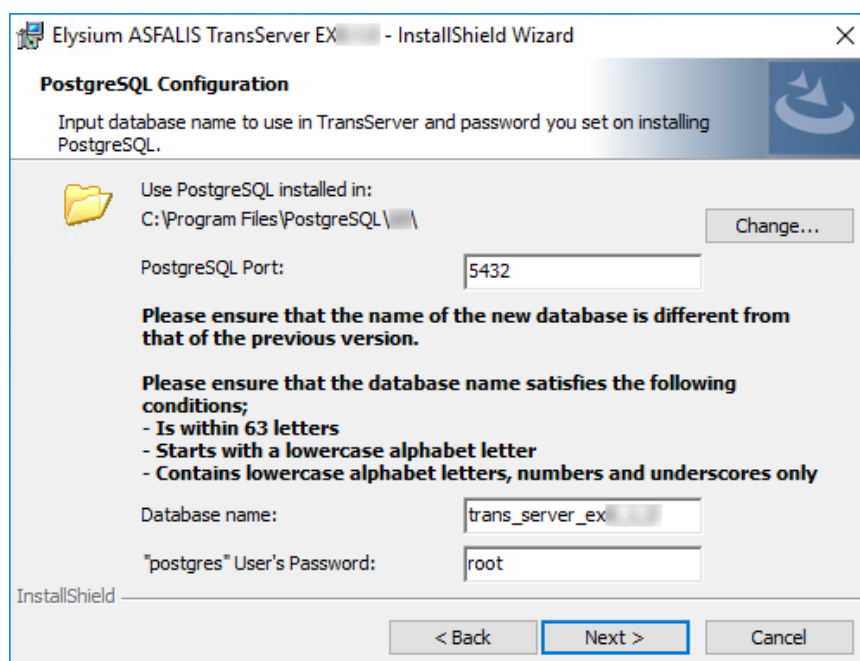
2.2.2. Installation of ASFALIS TransServer

Please install ASFALIS TransServer with the following steps.

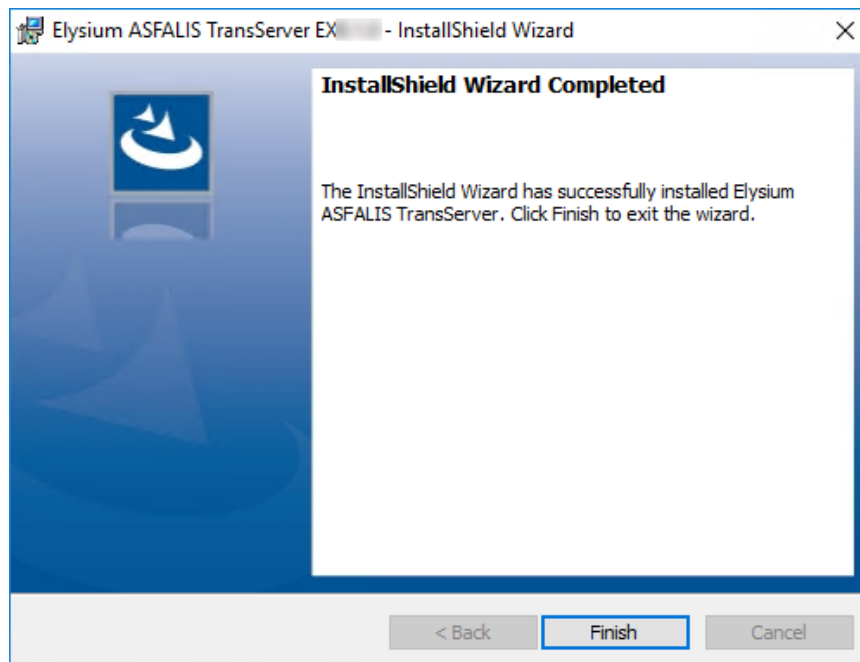
1. Run setup.exe and install ASFALIS TransServer in accordance with the dialogs.
<ASFALIS TransServer installation package>\installer\setup.exe
2. Follow the same steps as the fresh installation (not the upgrade) for the installation of Ruby for Elysium ASFALIS and the screen transition of ASFALIS TransServer.
3. Specify the installation folder of ASFALIS TransServer in "Destination Folder" dialog as follows.
 - Install Elysium ASFALIS TransServer to:
Specify the installation folder of ASFALIS TransServer. You can change the installation folder from the [Change] button at upper right. Please make sure to specify a different folder from "Installation directory of Elysium ASFALIS TransServer previous version."
 - Installation directory of Elysium ASFALIS TransServer previous version:
Specify the installation folder of previous version of ASFALIS TransServer. You can change the installation folder from the [Change] button at bottom right.
 - Select the installation option from "Upgrade (copy resource)" or "Upgrade (share resource)."
 - Upgrade (copy resource): Copy the resource of the previous version and use as the resource of newly installed version.
 - Upgrade (share resource): Share the resource of the previous version. Please select this option in case the resource folder has been changed from the default setting due to the limitation of the free disk space.



4. Insert the name of the database and the password for PostgreSQL set at the installation in "PostgreSQL Configuration" dialog. The default value for Database name is trans_server_ex*_* (*_* is the version number) When upgrading installation, please make sure to give a unique name which has never been used as the database name.



5. Please follow the steps of the wizard. When the installation has been completed, the following dialog appears. Click [Finish].



- Please ensure to enter the name and password of a user who has the write and read access to the shared folder when registering ASFALIS TransServer as Windows service.
- When you do not have ActiveDirectory environment, and you want to register ASFALIS TransServer as Windows service, select "Don't register as a Window service" from the wizard. Moreover, please perform the service registration manually by following the instruction on Section 2.1.5 step 28.



When you register ASFALIS TransServer as Windows service, it will automatically start when the computer is booted. Therefore, the user does not have to interactively log on to the computer and start it.

When you don't register ASFALIS TransServer as Windows service, the processing information will be output to command prompt, so if an error occurs, you will have more information.

An example of a usage would be to use the service for normal operation of ASFALIS TransServer, and when a problem occurs which needs to be investigated or tested temporarily, interactively start it.

Depending on the purpose of use and assumptions, please select the appropriate method.

6. If you register ASFALIS TransServer as Windows Service, open Windows service to confirm "ASFALIS TransServer" service. If you've confirmed that the service exists and is running, you have succeeded the installation.



For the list of services, press Windows key + [R] key at the same time. Enter "services.msc" in [Run] window and click [OK] button.

7. Give "Full Control" permission on the installation folder of ASFALIS TransServer to the user who executes ASFALIS TransServer.

2.2.3. Deletion of the Database

Follow the steps below on how to delete the old ASFALIS TransServer database after you have finished upgrading. Please be aware that this action is not mandatory.

1. Select Windows [Start] > [PostgreSQL 10] > [pgAdmin 4].
2. Double-click [PostgreSQL 10] (if default setting, select localhost:5432) from the object browser, and enter the password for PostgreSQL set during installation in the "PostgreSQL Configuration" dialog. Open the database, right-click the database name which is by default trans_server_ex*_* (*_* is the version number) and select [Delete].

2.3. Settings after the Installation

2.3.1. How to Change the Number of Application Server Instances

Change the number of Application Server instance depending on the number of concurrent users. Please refer to "Tuning Application Server Management Settings" of "Manual for Administrator."

2.3.2. How to Change the Resource Folder

Change the resource folder depending on the free disk space.

1. Stop ASFALIS TransServer if it is running.
2. Execute the following file and start command prompt.
<ASFALIS TransServer installation folder>\k2dashboard\start-console.bat
3. Execute the following command.

```
bundle exec rake ats:resources:copy RESOURCE_PATH=(the path to the resource folder)
```

4. Delete the resource folder which existed before the change.
5. Open the following file with text editor.
<ASFALIS TransServer installation folder>\config\k2server.ini
6. Change the value of "PrivateResourcePath" in K2server section to "the path to the resource folder."(*)
7. Restart ASFALIS TransServer.

(*) The detail specified here will be necessary when version up; therefore, please keep a record somehow.



Please ensure to specify either the local drive path or UNC path as the resource folder. Avoid specifying a path which includes a network drive (For example, N:\transserver\resources) because ASFALIS TransServer may not run properly.

2.3.3. How to Change the License Configuration

If the license server is changed, you need to change the configurations for ASFALIS TransServer and all Slave Nodes.

1. ASFALIS TransServer

- i. Open the following file with text editor.
`<ASFALIS TransServer installation folder>\set_ruby_env.bat`
- ii. Old values are written for "ELY_SEC_SERVER" and "ELY_SEC_PORT", so please change them to the new hostname and the port number and overwrite the file.
- iii. Restart ASFALIS TransServer.

2. Slave Nodes

- i. Open Slave Node Setting dialog (Please replace *** with version number).
 Menu: Start > [Elysium ASFALIS Component] > [EX***] > [setup node]
- ii. Select a node from the node list and select the "Common" tab. Enter Hostname and Port number of the new license server. Then click [Apply] button.
- iii. Restart Slave Nodes.



ASFALIS TransServer and Slave Node should refer to the same License Server.

2.3.4. How to Change the Shared Directory

Change the path as follows to change the shared directory of ASFALIS TransServer. Please refer to 2.1.1, “[Setup of Shared Directory](#)” for the notes on setting the shared network folder.

1. Stop ASFALIS TransServer if it is running.
2. Open the following file with a text editor.
`<ASFALIS TransServer installation folder>\set_ruby_env.bat`
3. Edit the shared network folder path defined with the following;
`"@set SHARED_FOLDER="`
4. Save and close the text editor.
5. Start ASFALIS TransServer.

Go through the following steps as well if you have registered ASFALIS TransServer as Windows Service, and changed the network drive settings.

1. Stop ASFALIS TransServer service if it is running.
2. Open the following file with a text editor.

<ASFALIS TransServer installation folder>\config\k2server.ini

3. Edit the network drive settings defined with the followings;
"SharedFolderDriveLetter="
"SharedFolderUncPath="
4. Save and close the text editor.
5. Start ASFALIS TransServer service.

3. Boot Procedure

3.1. Slave Node

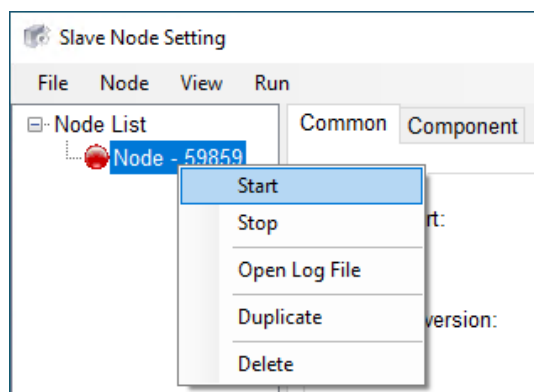
Start Slave Node.

[Boot from program menu]

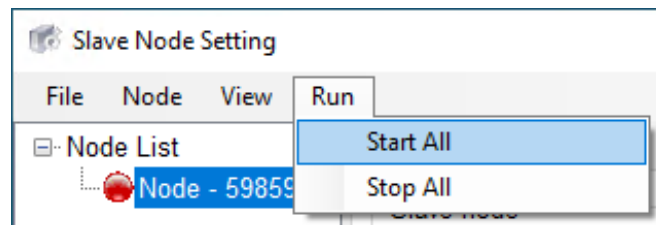
1. Run [Start] > [All Programs] > [Elysium ASFALIS Component] > [start node EX***].
(Please replace *** with version number)

[Boot from Slave Node setting dialog]

1. Right-click the node you would like to start, and select "Start."



2. Run the menu command [Run] > [Start All].



If you have set up multiple Slave Nodes as described in [Appendix A, Installation of Multiple Slave Node](#), please start all of them.

3.2. ASFALIS TransServer

If you have registered ASFALIS TransServer as Windows Service:

ASFALIS TransServer Service will boot automatically when you turn on the computer.

If ASFALIS TransServer is started properly, "event with ID 0" will be recorded in the application event log. If a problem occurs while starting, "event with ID 818" or "event with ID 819" will be recorded.

If you have not registered ASFALIS TransServer as Windows Service:

Start ASFALIS TransServer.

Execute the menu [Elysium TransServer] > [Start TransServer EX***] in the Start menu (Please replace *** with version number).

Then, following windows will open.

- TransServer
- Kloggr
- Apache
- k2scheduler
- Rails <number>

Please note that you cannot start ASFALIS TransServer from start menu when the ASFALIS TransServer service is already running.

4. First Time Configurations

4.1. Server Configurations

Open the following address in a web browser on a client machine and log in as Administrator.

Address	http:// <Machine name of TransServer>:<Port number(Default:3000)> e.g.) http://server:3000
Default account	User Name: admin Password: admin

Select the menu [Admin Menu] > [Server Configurations] and configure the following items suitable for your environment:

	Configuration Name	Description
1	system.default.timezone	Default Time Zone
2	web.common.server_base_address	Specify base URL of ASFALIS TransServer for users.
3	scheduler.error_mail.sender	Specify sender of notification message in case of job execution error.
4	scheduler.error_mail_recipient	Specify recipient of notification message in case of job execution error.
5	system.monitor.error_mail_recipient	Specify recipient of notification message in case of monitor error.
6	system.mail.smtp_server	Specify SMTP server FQDN to send messages.
7	system.mail.smtp_port	Specify SMTP port to send messages
8	system.mail.smtp_default_domain	Specify the default domain to send messages.

5. Shut Down Procedure

5.1. ASFALIS TransServer

If you have registered ASFALIS TransServer as Windows Service

Stop ASFALIS TransServer service from Service list.

If ASFALIS TransServer is stopped properly, "event with ID 0" will be recorded in the application event log. If a problem occurs while stopping, "event with ID 818" or "event with ID 819" will be recorded.

If you have not registered ASFALIS TransServer as Windows Service

Execute the menu [Elysium TransServer] > [Stop TransServer EX***] in the Start menu (Please replace *** with version number).

5.2. Slave Node

Right-click on the node to stop in the Slave Node Setting dialog and select [Stop] from the context menu.

6. Uninstallation

This chapter explains how to uninstall ASFALIS TransServer and ASFALIS Slave Node. When you reinstall ASFALIS TransServer, you first need to back up the current setting of ASFALIS TransServer that is saved in the database, and then restore the setting to new ASFALIS TransServer. Please refer to "Manual for Administrator" for details of backing up and restoring.

6.1. ASFALIS TransServer

1. Uninstall the following programs from "Programs and Features" in the Control Panel. Please ensure to stop ASFALIS TransServer beforehand. If it is registered as Windows Service, then please stop from there.
 - i. Elysium ASFALIS TransServer
 - ii. Ruby for Elysium ASFALIS
Do not uninstall Ruby if other ASFALIS products are still installed on the same machine and you are going to continue using it.
 - iii. PostgreSQL
Delete the database of ASFALIS TransServer instead of uninstalling PostgreSQL, if PostgreSQL is also used for applications other than ASFALIS TransServer.
2. Delete the installation folder of the uninstalled program.

6.2. Slave Node

1. Uninstall the following programs from "Programs and Features" in the Control Panel.
 - i. Elysium ASFALIS Components
 - ii. Ruby for Elysium ASFALIS
Do not uninstall Ruby if other ASFALIS products are still installed on the same machine and you are going to continue using it.
2. Delete the installation folder of the uninstalled program.

Appendix A: Installation of Multiple Slave Node

A.1. Install one Slave Node onto Each Computer

Install Slave Node onto all computers that you would like to.

A.2. Install multiple Slave Nodes onto a Single Computer

1. Input the 1st setting on the Slave Node Setting dialog and save the setting.
2. Add/Duplicate Slave Node.
Menu: [Node] > [New node] or [Node] > [Duplicate node]
3. After setting for each Add/Duplicate Slave Node, click [Apply] button.



Please refer to "ASFALIS Slave Node" in this "Installation Guide" for the detail.

Appendix B: Troubleshooting

No	Contents
1	<p>Slave Node / CATIA V5</p> <p>To use CATIA V5 component in the Slave Node on Windows 8.1 or later, allow the following programs to communicate through Windows Firewall. Change settings from Control Panel or execute the script (firewall_add.bat) as Administrator.</p> <p><u>New Adapter</u></p> <ul style="list-style-type: none"> • CATIA V5 ENF Writer: caa2fbt.exe • CATIA V5 ENF Reader: fbt2caa.exe <p>The script file exists in the following path: <Installation folder> \module\CADFeature\Batch\CatiaV5.x64\common\firewall_add.bat</p> <p><u>Legacy Adapter</u></p> <ul style="list-style-type: none"> • CATIA V5 ENF Writer: caa2enf.exe • CATIA V5 ENF Reader: enf2caa.exe <p>The script file exists in the same folder as the modules. <Installation folder>\module\CaaExe\win\R<version>\firewall_add.bat</p> <p>If the installation folder is a network folder, specify UNC path (path starting with '\\') as the setting path without using a network drive.</p>

No	Contents
2	<p data-bbox="247 241 630 275">Slave Node / SOLIDWORKS</p> <p data-bbox="247 315 1414 389">When UAC (User Account Control) is turned on in Windows and legacy adapter is used, you need to run a macro with the following steps.</p> <ol data-bbox="261 430 1422 1160" style="list-style-type: none"> <li data-bbox="261 430 991 463">1. Turn UAC off temporarily and restart the computer. <li data-bbox="261 488 1401 607">2. Start SOLIDWORKS, select [Tools] > [Macro] > [Edit], and open the following macro file (load_addin.swp). <code data-bbox="300 573 1193 607"><installation folder>\module\SwExe\win\<version>\load_addin.swp</code> <li data-bbox="261 631 1422 947">3. Edit load_addin.swp and replace the value of sAddinName with full path of the original DLL as below. <ul data-bbox="320 730 1422 947" style="list-style-type: none"> <li data-bbox="320 730 1034 763">◦ (before) Const sAddinName As String = "sw2nut.dll" <li data-bbox="320 788 1422 947">◦ (after (example)) Const sAddinName As String = <code data-bbox="347 831 1422 904">"C:\Elysium\ASFALIS_Component\EX*_*\module\SwExe\win\<version>\sw2nut.dll"</code> (Please replace *_* with version number.) <li data-bbox="261 972 576 1005">4. Run load_addin.swp. <li data-bbox="261 1030 1382 1104">5. Select [Tools] > [Add-Ins] menu of SOLIDWORKS and confirm if "Sw2nutAddin" is displayed in the Add-Ins window. <li data-bbox="261 1128 820 1160">6. Turn UAC on and restart the computer.
3	<p data-bbox="247 1234 630 1267">Slave Node / SOLIDWORKS</p> <p data-bbox="247 1308 1414 1382">Before using SOLIDWORKS component, you need to start SOLIDWORKS and specify the default templates.</p>
4	<p data-bbox="247 1413 408 1447">Slave Node</p> <p data-bbox="247 1487 1422 1561">When you use Slave Node on Windows 8.1 or later, you need to run it as Administrator. (Steps)</p> <p data-bbox="247 1561 1414 1635">Right-click on [Elysium ASFALIS Component] > [EX***] > [start node] in the start menu, and select [Run as administrator] (Please replace *** with version number)</p>
5	<p data-bbox="247 1671 408 1704">Slave Node</p> <p data-bbox="247 1744 1414 1890">When a task execution failed and error code is -11 (The Elysium license server is not running or the ASFALIS Adapter could not be connected to it.), the license server is not running or the license setting of Slave Node is incorrect. You can change the license setting of Slave Node in the setting dialog of Slave Node.</p>

No	Contents
6	<p data-bbox="247 241 406 275">Slave Node</p> <p data-bbox="247 315 1407 472">When a task execution failed and the message ["****" is not defined] (*** is the name of failed service) appears, select [Start] > [All Programs] > [Elysium TransServer] > [TransServer EX****] > [Slave Node Configuration], click the [Update] button and check services currently available (Please replace *** with version number).</p> <ul data-bbox="272 517 1407 775" style="list-style-type: none"> • (Case: When no service is on the list) The server name or the port number of the added Slave Node are incorrect. Or you have not saved yet by clicking [SAVE] in the setting dialog of Slave Node. • (Case: When services shown on the list are not intended ones) If service needs CAD, the CAD setting is necessary in the setting dialog of Slave Node.
7	<p data-bbox="247 846 735 880">ASFALIS TransServer / Slave Node</p> <p data-bbox="247 913 1305 1025">When a task doesn't work on Windows 8.1 or later, try to set network drives as Administrator. (Steps)</p> <p data-bbox="247 1025 1332 1104">Right-click on [Accessories] > [Command Prompt] in the start menu, click [Run as administrator], and enter the following command into the appeared prompt.</p> <p data-bbox="247 1144 1407 1178">net use <drive name> <UNC path> <password of administrator > /user:<administrator></p> <p data-bbox="247 1218 807 1252">(e.g.) net use k: \\pc1\asfalis pass /user:aaa</p>
8	<p data-bbox="247 1294 742 1328">ASFALIS TransServer / PostgreSQL</p> <p data-bbox="247 1361 1430 1503">If Apache doesn't start when ASFALIS TransServer starts, it is possible that you have not completed the installation of PostgreSQL. Try to re-install PostgreSQL according to installation procedure / caution (2.1.4, "Installation of PostgreSQL") described in this manual.</p>

No	Contents
9	<p>ASFALIS TransServer</p> <ol style="list-style-type: none"> 1. Allow the programs to communicate through Windows Firewall. <ol style="list-style-type: none"> i. Open [Control Panel] > [System and Security] > [Windows Firewall]. ii. In the left pane, click "Allow a program or feature through Windows Firewall". iii. Click [Change settings] and add the following programs to the list of allowed programs. <ul style="list-style-type: none"> ▪ Ruby: <Ruby installation folder>\v9\rubies\ruby-2.6.5\bin\ruby.exe (e.g. C:\ELYSIUM\Ruby\v9\rubies\ruby-2.6.5\bin\ruby.exe) ▪ Apache HTTP Server: <ASFALIS TransServer installation folder> \Apache\<Version>\Apache24\bin\httpd.exe iv. Click [OK]. 2. Give "Full Control" permissions on the installation folder of ASFALIS TransServer to the user who executes ASFALIS TransServer.
10	<p>ASFALIS TransServer</p> <p>When starting ASFALIS TransServer service from Service Management Tools, if an error message, "Error 1053: The service did not respond to the start or control request in a timely fashion." appears, the load of the computer may be too heavy, etc. This error message is displayed by Service Management Tools, but the service continues activating in the background. Wait a while and refresh, then confirm that the service status is "Started" or "Running". By starting from the [Service] tab of the Task Manager, the error message will not appear though the service may take time to activate. Furthermore, if the service does not start for a long period of time, there may be a problem. Please try starting ASFALIS TransServer from the Start Menu or check to see if any information is being recorded in the log. If you need further assistances, please contact the help desk or Elysium.</p>
11	<p>ASFALIS TransServer</p> <p>When restarting ASFALIS TransServer service from the [Service] tab of Task Manager, because the service takes awhile to stop, the service status may not switch from "Stop" to "Running". In this case, start the service manually. Furthermore, when restarting from Service Management Tools, the service will restart properly.</p>

No	Contents
12	<p>ASFALIS TransServer / Installation</p> <p>Warning message on the installation failure of ".NET Framework 4.5.2" may be displayed when ".NET Framework 4.0 - 4.5.1" is also installed, and is in use by another application. However, the installation is successfully completed, so please restart the computer to reflect the changes once the installation of ASFALIS TransServer is completed.</p>
13	<p>ASFALIS TransServer / Installation</p> <p>When starting ASFALIS TransServer, if a problem occurs, for example, Apache or kloggr not starting, the reason may be due to the lack of privilege on the ASFALIS TransServer installation folder for the execution user. Not via the group that one belongs to, but grant full control access privilege to the execution user explicitly.</p>
14	<p>ASFALIS TransServer / Installation</p> <p>When installing ASFALIS TransServer, if you specify the network drive as the resource folder, it may fail installation.</p> <p>When specifying the folder on the network as the resource folder, please make sure to specify it by UNC path.</p> <p>* An example of successful installation: \\server\transserver\resources *An example of unsuccessful installation: N:\transserver\resources ("N:" means that the folder on the "server" is mounted as the local drive of the target computer.)</p> <p>* Even after installation, do not specify the path including the network drive (For example, N:\transserver\resources) as the resource folder path. Doing so may cause ASFALIS TransServer to not run properly.</p>
15	<p>ASFALIS TransServer / Installation</p> <p>It may be the cause that the specified port number is used by another application when ASFALIS TransServer fails to start properly for the first time after the installation.</p> <p>Please change the port number specified in the following configuration file to use other port numbers. <Installation folder ASFALIS TransServer>\config\k2server.ini</p> <p>Below is a list of port numbers which ASFALIS TransServer uses by default.</p>

- List of port numbers which ASFALIS TransServer uses by default

Process	Port number (Default)	Where to specify in the configuration file
Apache (Reverse proxy)	3000	[K2server] section > "ListenPort"
Nginx (Load balancer, ZIP compression)	4002	[Nginx] section > "ListenPort"
Rails (Application server)	30000 30001 30002	[K2dashboard] section > "BalancerMemberStartPort" (This defines the port number to start with, and uses the number of ports specified with "BalancerMemberNum" serially.)
KLoggr (Log record)	3006	[Kloggr] section > "ListenPort"
K2server (Statistics record)	50000	[K2server] section > "BalancerMemberStartPort"
MasterController (Scheduler process monitor)	3011	[K2scheduler] section > "MasterControllerPort" (*)
QueueController (Job queue management)	3012	[K2scheduler] section > "QueueControllerPort" (*)
MiscWorker (Backup etc.)	3013	[K2scheduler] section > "MiscWorkerPort" (*)
ScriptComponentWorker (Run scripts)	3100 3101	[K2scheduler] section > "ScriptComponentWorkerPortStart" (*) (This defines the port number to start with, and uses the number of ports specified with "ScriptComponentWorkerNum" serially.)
PerSlaveNodeWorker (Communication with Slave Nodes)	3200, ...	[K2scheduler] section > "PerSlaveNodeWorkerPortStart" (*) (This defines the port number to start with, and uses a port per Slave Node)

(*) : [K2scheduler] section does not exist at the initial state, and the default ports are used by default. Add this section to customize the ports to use for your needs.

All rights reserved by Elysium or the original author of this material. The content may not be edited, reproduced, distributed, transmitted, displayed, published, broadcast, sold or lent without the prior permission of the author.