



ASFALIS TransServer
Folder Monitoring Function Manual

August 2020
Elysium Co. Ltd.

Index

1. Folder Monitoring Function	1
1.1. Overview	1
1.2. System Requirement	1
2. How to Install Folder Monitoring Function	2
2.1. Installing Batch Function	2
2.2. Setting up Folder Monitoring Function	2
3. Managing the Schedule	4
3.1. Monitoring Folders	4
3.1.1. Starting the Service	4
3.1.2. Stopping the Service	4
3.1.3. Restarting the Service	4
3.2. Scheduling	4
3.2.1. Creating a New Schedule	4
3.2.2. Editing the Schedule	8
3.2.3. Deleting the Schedule	8
3.2.4. Checking Errors on the Schedule	8
3.2.5. Enabling / Disabling the Schedule	9
3.2.6. Executing Manually	9
3.2.7. Exiting the Schedule Management Page	9
3.3. Instruction File for the Data Translation	9
4. Log File of File Monitoring Function	12

1. Folder Monitoring Function

1.1. Overview

This document shows the installation procedure of the Folder Monitoring Function of ASFALIS TransServer and describes its capability.

This is a function to poll a specified directory at fixed intervals. For example, you can have files automatically translated only by placing them into a folder to poll.

The Folder Monitoring Function uses ASFALIS TransServer Batch Function, so that you can use this function combined with "JobEntry," "JobState" and "JobDownload" commands. Please note that it requires the installation of ASFALIS TransServer Batch Function prior to the installation of Folder Monitoring function itself.

1.2. System Requirement

It is prerequisite to install ".NET Framework 4" prior to the installation of Folder Monitoring Function to use Folder Monitoring Function.

It requires the following license to utilize Folder Monitoring Function.

- ASF-API/S

2. How to Install Folder Monitoring Function

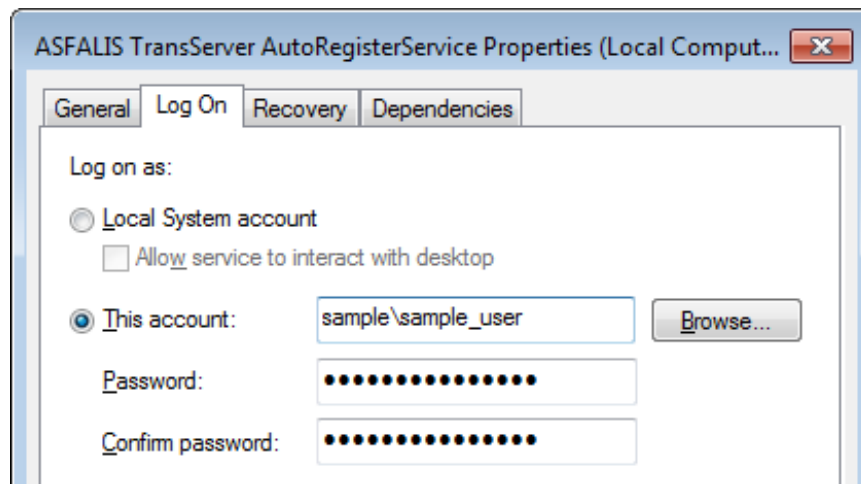
Copy "tools" folder in the installer to any directory. It is also prerequisite to install "Batch Function" prior to the installation of Folder Monitoring Function to use Folder Monitoring Function.

2.1. Installing Batch Function

Please refer to "2. How to Install Batch Function" in "ASFALIS TransServer Batch Function Manual" (ASFALIS TransServer_Batch_en.pdf) for the instruction on how to install ASFALIS Batch Function.

2.2. Setting up Folder Monitoring Function

1. Configure the settings on the service of Folder Monitoring Function in the following procedure.
 - i. Open the file below.
tools\autoregister\conf\AutoRegisterService.conf
 - ii. Specify the folder as the value for the parameters below.
Please ensure that the account who executes this service has a permission to access to the specified folder.
 - JobStatusFileOutputDirectory
Specify the output folder of "Job status file."
 - RegisterFileOutputDirectory
Specify the output folder of "Register file."
2. Execute the command below with administrative privilege to register "ASFALIS TransServer AutoRegisterService" to the service.
tools\autoregister\service\install.bat
The following message will appear once the registration is completed successfully.
[SC] CreateService SUCCESS
3. Change the logon settings of the "ASFALIS TransServer AutoRegisterService" which has been registered at step 2. above.
Select ASFALIS TransServer AutoRegisterService from [Control panel] > [System and Security] > [Administrative tools] > [Services] > [ASFALIS TransServer AutoRegisterService] and then right-click to open "Property." Select "Account" in [Logon] tab, and then specify the account name and the password of the account who executes Folder Monitoring Function.

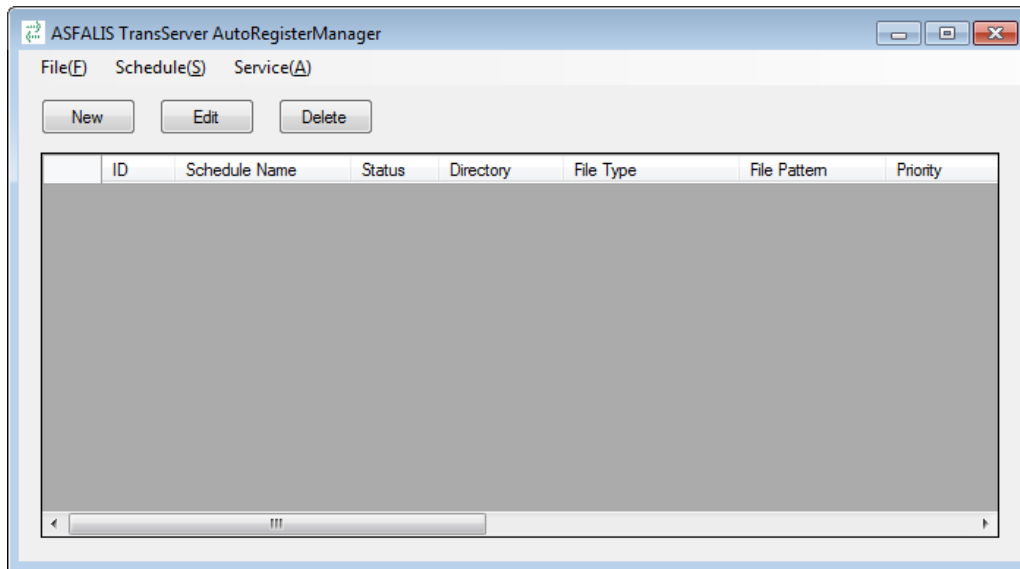


In case the service cannot be started, confirm if the logon account of this service has a permission to access to the output folder of AutoRegisterService.conf.

3. Managing the Schedule

Start ASFALIS TransServer AutoRegisterManager by double-clicking the file below.
tools\autoregister\manager\AutoRegisterManager.exe

The administration window below will appear.



3.1. Monitoring Folders

3.1.1. Starting the Service

Select [Service] > [Start] from the menu bar to start "ASFALIS TransServer AutoRegisterService."

3.1.2. Stopping the Service

Select [Service] > [Stop] from the menu bar to stop "ASFALIS TransServer AutoRegisterService."

3.1.3. Restarting the Service

Select [Service] > [Restart] from the menu bar to restart "ASFALIS TransServer AutoRegisterService."

3.2. Scheduling

3.2.1. Creating a New Schedule

Click [New] to create a new schedule or specify the options of the command.

[Creating a New Schedule]

Items in the Dialog	Description
Schedule Name	Specify the name of the schedule.
Directory	Specify the directory (*1) to monitor.
File Type	Specify the file type from CAD file or instruction file. When the instruction file is specified, you cannot specify the name of the file to monitor. "*.info" file in the directory specified as "Directory" will be automatically specified. Please refer to the 3.3, "Instruction File for the Data Translation" for the detail on the format of the instruction files.
Filename Pattern	Specify the file to monitor by the filename. Separate each filename by slash "/" when you specify multiple filenames. EX) *.prt / *.zip
Scheduling Method	Specify the interval for monitoring by the following four options. Fixed Intervals: Monitor by the interval of specified minutes. Specify by the number from 1 to 9999. Designated Time: Monitor every day at the specified time. Day of Week and Time: Monitor on the day(s) of the week at the specified time. Day & Time: Monitor on a date of the month at the specified time.

Items in the Dialog	Description
Output File	Specify whether to export files by "Exit" or "Not Exit." Please note that you cannot specify the options of the commands for "JobDownload" when "Not Exit" is specified.
Remarks	You can add some notes on the schedule here.

(*1)When specifying the directory to monitor, use a path (such as UNC) that can be referenced from the service. The Windows service is used to monitor directories, and the monitored path must be visible to the service. Network drive cannot be accessed by the service because it is associated with login information.

[Configuring the Commands]

You can configure the commands, "JobEntry," "JobState" and "JobDownload."
Please refer to "ASFALIS TransServer Batch Function
(ASFALIS TransServer_Batch_ja.pdf)" for the details on each command.

- JobEntry:

This is to specify the options for "JobEntry" command by the following arguments.
Example)

```
-U Login-name -W Password -L Operation-ID -S Scenario-ID
```

Register File will be exported to the path specified between

<RegisterFileOutputDirectory> tags in AutoRegisterService.conf file.

Register File includes Job ID and Job status of the submitted Job. The format is as follows:

- How to Name the Register File.
 - Monitoring an Instruction File : \${Name of Instruction File}_\${Register ID}.txt
 - Monitoring a CAD File : \${Schedule ID}_\${Register ID}.txt
- Job status code shows the status of the Jobs submitted earlier. Below is a list of job status codes and the description for each code.

Job Status Code	Job Status
0000	Job has not been processed yet.
0001	License is currently used up.
0002	Job is in the progress.
0003	Job is abend.
0004	Job has been completed successfully.

Job Status Code	Job Status
0006	Job has been terminated.
9999	Failed to obtain the Job status.

- **JobState :**

This is to specify the options for "JobStatus" command by the following arguments.
Example)

```
-U: Login-name -W: Password
```

Job Status File will be exported with the name "\${Job ID}.txt" to the path specified between <JobStatusFileOutputDirectory> tags in AutoRegisterService.conf file. The absolute path to the directory, where the output files of the Job are saved, will be exported to Job Status file when the Job has been completed successfully and the output directory is specified for JobDownload command.

- **JobDownload :**

This is to specify the options for "JobDownload" command by the following arguments.
Example)

```
-U: admin -W: admin -D: ${ResultFolder}\download\${RegisterId}
```

Output files and translation log files will be exported to the folder below.
Download-path\\${OperationID}_\${Input file name}\C\${Order of the Component}_\${Component instance ID}

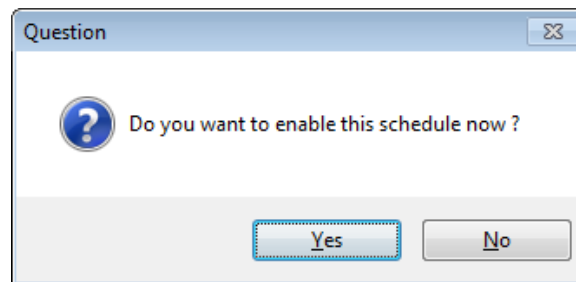
Below is a list of replacement keywords to specify the output folder.

Replacement keyword	Description
\${LoginName}	This is to specify the login name of the login user.
\${JobLotId}	This is to specify Operation ID used at submitting the Job.
\${JobId}	This is to specify the Job ID.
\${RegisterId}	This is to specify unique Register ID issued by monitoring module.
\${ResultFolder}	This is to specify a directory to export the translation results to. (tools)\autoregister\service\result
\${InputFileName}	This is to specify an input file name excluding the file extension.

Replacement keyword	Description
\${ScheduleName}	This is to specify the Schedule name.
\${ScheduleId}	This is to specify the Schedule ID.
\${EntryDate}	This is to specify the date when the file is submitted automatically by File Input function. (yymmdd)
\${EntryDateTime}	This is to specify the date when the file is submitted automatically by File Input function. (yymmddhhmmss)

Click [Set] to save the schedule. Error icon and tool tips will be displayed when an error is detected on the settings, so correct accordingly.

A dialog will appear asking if you wish to activate the created schedule. Click [Yes] to activate.



It communicates with Monitoring service when a schedule is saved. An error message will appear when it failed to communicate. Please confirm that the service is running.

3.2.2. Editing the Schedule

Select a schedule to edit from the list and click [Edit] in the dialog.

A dialog will appear where you can edit the schedule.

3.2.3. Deleting the Schedule

Select a schedule to delete from the list and click [Delete] in the dialog.

The selected schedule will be deleted.

3.2.4. Checking Errors on the Schedule

Select [Schedule] > [Error Check] from the menu bar.

Schedules will be checked whether they are valid. "The schedule is valid" dialog will appear when the schedule is valid. The schedule where the error was detected will be highlighted in red in the list and will be deactivated.

3.2.5. Enabling / Disabling the Schedule

Select a schedule to activate / deactivate from the list, and then right-click to select [Enable] / [Disable].

Please note that only the activated schedules will be monitored. White background in the list means that the schedule is activated, grey means deactivated and red means the schedule has an error.

3.2.6. Executing Manually

Select a schedule to execute manually from the list, and then right-click to select [Manual Execution]. This manual execution will be prioritized to the Jobs submitted automatically at the specified schedule.

3.2.7. Exiting the Schedule Management Page

Select [File] > [Exit] from the menu bar, or click [Close] at the upper right of the dialog to shut down ASFALIS TransServer AutoRegisterManager.

3.3. Instruction File for the Data Translation

You can configure the settings on the data translation by an instruction file when Folder Monitoring function is in use.

Create a file with the setting information for the data translation in ".info" format. Place that file under the directory to monitor. Below is an example of the instruction file.

- The list below explains the role of each node.

Layer	Node Name	Description
1	auto_register_instruction	This is to specify the root element of the instruction file.
2	user	This is to specify the login information of the user who submitted the corresponding Job.
3	login_name	This is to specify the login name to log in to ASFALIS TransServer.
3	password	This is to specify the login password to log in to ASFALIS TransServer.
-	/user	This is an end (closing) tag.
2	job_entry_request	This is to specify the information on the Job entry. Write in the same format as the XML file specified by argument "-X" for "JobEntry" command.

Layer	Node Name	Description
2	job_download_request	This is to specify whether to download output files and log files. Specify nothing in case you do not need to download any files..
3	download_path	This is to specify the directory to save downloaded files by "Job Download" by path. When nothing is specified, the value for "SAVEDIR" in "job.ini" file will be used as the directory to download.
3	job_output_flg	This is to specify whether to download translation result files which are specified as output file of a job. 0: Don't download 1: Download
3	log_flg	This is to specify whether to download translation log files. 0: Don't download 1: Download
3	component_output_flg	This is to specify whether to download translation result files which are NOT specified as output file of a job. 0: Don't download 1: Download
3	zip_flg	This is to specify whether to compress download target file (or directory). 0: Don't compress 1: Compress
3	unzip_flg	This is to specify whether to automatically expand the ZIP files when the translation result file is zipped. 0: Expand the ZIP file 1: Don't Expand the ZIP file
-	/job_download_request	This is an end (closing) tag.
-	/auto_register_instruction	This is an end (closing) tag.

- Example) Instruction file to translate Parasolid file to ENF

```
<?xml version="1.0"?>
<auto_register_instruction xmlns="Elysium.K2"
xmlns:xsi="http://www.w3.org/2001/XMLSchema-instance">
  <user>
    <login_name>guest</login_name>
    <password>guest</password>
  </user>
  <job_entry_request>
    <file_type>0</file_type>
    <via_updir>1</via_updir>
    <input_files>
      <input_file>
        <input_file_path>C:\k3\test\indir\Asm1.x_t</input_file_path>
        <top_assy>1</top_assy>
      </input_file>
    </input_files>
    <job_lot_id>2</job_lot_id>
    <scenario_id>2</scenario_id>
    <job_option>
      <priority>1</priority>
      <is_nightly>0</is_nightly>
    </job_option>
  </job_entry_request>
  <job_download_request>
    <download_path>C:\k3\test\downidir</download_path>
    <job_output_flg>1</job_output_flg>
    <log_flg>1</log_flg>
    <component_output_flg>1</component_output_flg>
    <zip_flg>1</zip_flg>
    <unzip_flg>0</unzip_flg>
  </job_download_request>
</auto_register_instruction>
```

4. Log File of File Monitoring Function

Below are the file path of log files of File Monitoring Function.

- Log file of Monitoring Service
tools\autoregister\service\logs\AutoRegister.log
- Log file of Schedule Management
tools\autoregister\manager\logs\AutoRegisterManager.log

All rights reserved by Elysium or the original author of this material. The content may not be edited, reproduced, distributed, transmitted, displayed, published, broadcast, sold or lent without the prior permission of the author.