



**Elysium ASFALIS SmartLauncher for DFM  
Studio  
Installation Guide**

January 2022  
Elysium Co. Ltd.

# Index

1. Overview	1
1.1. What is Elysium ASFALIS SmartLauncher?	1
2. Installation	2
2.1. Before Installation	2
2.1.1. License Setting	2
2.1.2. Install .NET Framework	2
2.2. Install Using the Installer	3
2.2.1. Manual Installation	3
2.2.2. Silent Installation	4
2.3. Initial Settings for CAD Plug-in	8
2.4. Initial Settings for CAD Systems	9
2.4.1. Creo Parametric (Plug-in)	9
2.4.2. SOLIDWORKS (Plug-in)	10
2.4.3. Inventor (Plug-in)	11
2.4.4. CADmeister (Standalone)	11
3. Start ASFALIS SmartLauncher	12
3.1. From Windows Explorer Context Menu	12
3.2. From CAD User Interface	12
3.3. How to Customize CAD Environment to Use CAD Plug-in	14
3.3.1. For NX	14
3.3.2. For Creo Parametric	14
4. Utilize ASFALIS SmartLauncher	15
4.1. Translate CAD Data	15
4.2. Run ASFALIS Scenarios	18
4.3. Check Progress and Results	21
5. Uninstallation	22
6. Troubleshooting	23

# 1. Overview

## 1.1. What is Elysium ASFALIS SmartLauncher?

Elysium ASFALIS SmartLauncher is one of the front-ends which is designed to simplify the process to utilize Elysium technology. It is available in following two types:

- ASFALIS SmartLauncher (From Windows context menu)  
This is available from the context menu on Windows Explorer.
- ASFALIS SmartLauncher (From CAD User Interface)  
This is plugged into the following CAD systems: Creo Parametric, NX, SOLIDWORKS

The chart below shows the capabilities available in each type.

Use	From Windows context menu	From CAD User Interface (*1)
Data translation between CAD Plug-in adapters	OK	OK
Data translation between CAD Plug-in adapter and CAD Standalone adapter	OK	OK
Data translation between CAD Standalone adapters	OK	-
Data translation of saved files	OK	OK
On-memory translation of CAD models (*2) (*5)	-	OK (*3)
Running ASFALIS Scenarios	OK (*4)	OK (*4)
Batch translation	-	-

OK: Available , - : Not available

- (\*1): [Import]/[Export] command in the CAD user interface is available in the following CAD systems: Creo Parametric, NX, SOLIDWORKS
- (\*2): This is to translate data that has not been saved yet.
- (\*3): You can enable/disable on-memory translation from [Preference] > [More options] > [CAD] dialog.
- (\*4): Settings required from [Preference] > [Feature] to run ASFALIS Scenarios.
- (\*5): NX supports on-memory translation when exporting only; Creo Parametric and SOLIDWORKS support on-memory translation when importing and exporting.

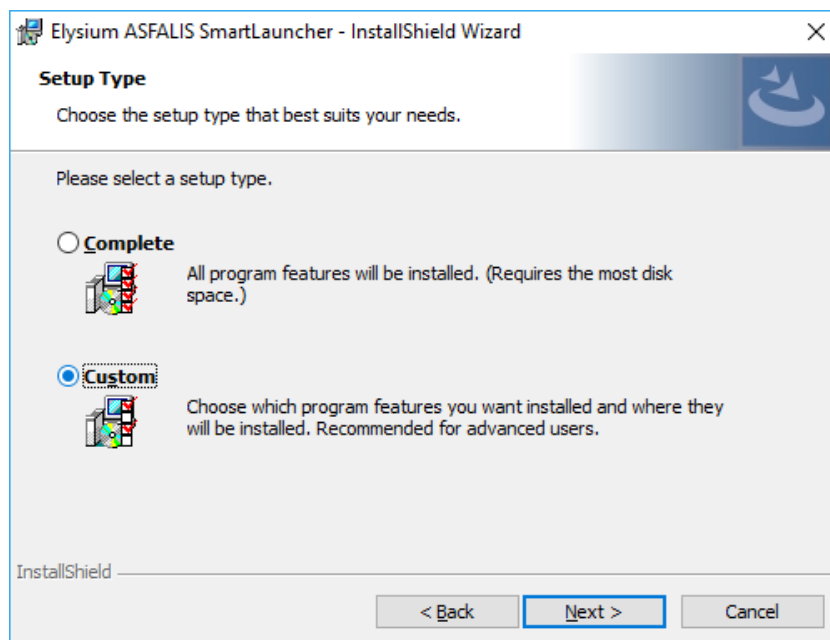
## 2. Installation

### 2.1. Before Installation

#### 2.1.1. License Setting

It is recommended to set up the license server and register licenses prior to the installation of ASFALIS SmartLauncher, so that you can select and set up the products which you are licensed to automatically along with the installation.

Please select "Custom" for setup type to set up licensed products automatically.



#### 2.1.2. Install .NET Framework

Please note that you may need to manually install ".NET Framework" prior to the installation of ASFALIS SmartLauncher depending on your environment.

See below and install it if necessary.

##### ■ .NET Framework 4.0 - 4.5.1 is installed

Run the following installer to install .NET Framework prior to the installation of ASFALIS SmartLauncher.

- <ASFALIS SmartLauncher installation package>  
\\ISSetupPrerequisites\\{C4366B56-BE8F-41DA-AEFC-CB5165ADB5D3}\\NDP452-KB2901907-x86-x64-AllOS-ENU.exe

##### ■ .NET Framework 3.\* or earlier is installed / .NET Framework is not installed

Skip this process, and start the installation of ASFALIS SmartLauncher. .NET Framework 4.5.2 will be installed automatically.

### ■ .NET Framework 4.5.2 or later is installed

Skip this process, and start the installation of ASFALIS SmartLauncher. An appropriate .NET Framework version is already installed.

## 2.2. Install Using the Installer

### 2.2.1. Manual Installation

Run "setup.exe" in the installation package, and follow the instructions in the dialog.

- [Installer of ASFALIS SmartLauncher]  
<ASFALIS SmartLauncher Installation Package>\setup.exe



During the installation, specify the system settings and the range of users to apply specified translation settings from the following two options:

#### ■ "Anyone who uses this computer (all users)":

Select this option to;

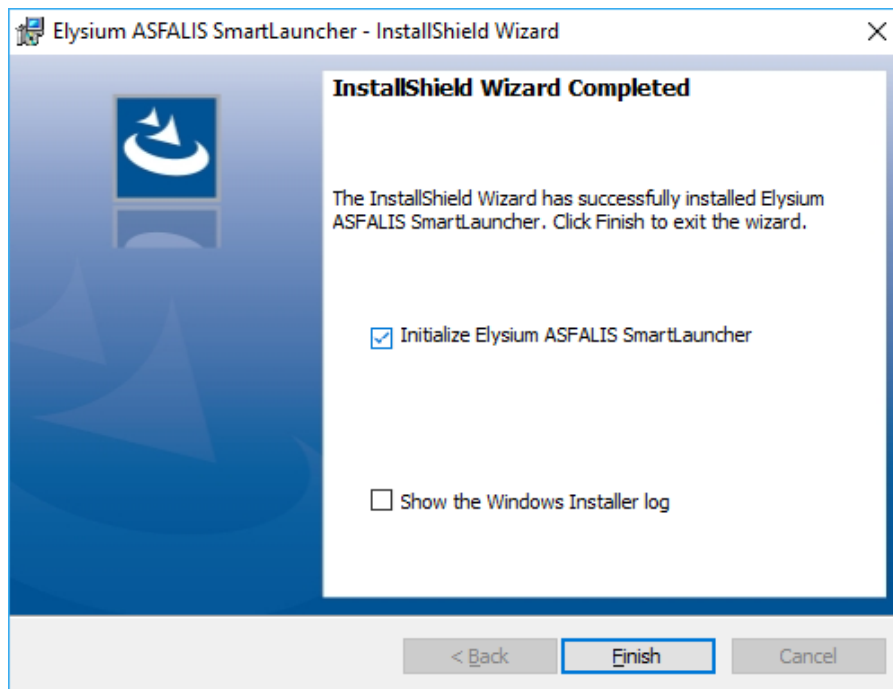
- Make ASFALIS SmartLauncher available  
(Create a desktop shortcut, and add to Program List)
- Apply the same translation settings, and Apply later changes made by B35

Furthermore, in the environment where the User Account Control (UAC) is enabled, the UAC dialog will be displayed when executing [System Preference].

#### ■ "Only for me (<UserName \*>)" (\* The user under who the installation is performed):

Select this option to make ASFALIS SmartLauncher available (create a desktop shortcut, and add to Program List) to the installation user only. Any later changes on settings will be applied to ASFALIS SmartLauncher run by that user only (will not affect ASFALIS SmartLauncher run by other users).

The following dialog will appear once the installation is completed. Check in the checkbox of "Initialize Elysium ASFALIS SmartLauncher" to configure initial settings.



### 2.2.2. Silent Installation

Run command prompt as an administrator, and run "setup.exe" in the installation package with arguments to specify options. This allows to install ASFALIS SmartLauncher without any user interaction. Below is an example command.

```
setup.exe /s /v"/qn"
```

- [Installer of ASFALIS SmartLauncher]  
<ASFALIS SmartLauncher Installation Package>\setup.exe

Add more options to customize the installation (Components to install, and settings) for your needs. Below is a list of options available for this installation.

- ELY\_SEC\_SERVER

Description	Specify the host name of the license server.
Value	Any character string
Default value	Not specified (Empty string)
Note	-

- ELY\_SEC\_PORT

Description	Specify the port number of the license server.
Value	Any number

Default value	5093
Note	-

- **INSTALL\_SHELL\_EXTENSION**

Description	Specify whether to enable to run ASFALIS SmartLauncher from Windows Explorer context menu.
Value	Either of the following; 0: Don't enable to run from Windows Explorer context menu 1: Enable to run from Windows Explorer context menu
Default value	1
Note	-

- **CREATE\_ALL\_SHORTCUTS**

Description	Specify whether to create a desktop shortcut automatically.
Value	Either of the following; 0: Don't create a shortcut 1: Create a shortcut
Default value	0
Note	-

- **APPLICATION\_USERS\_ADT**

Description	Specify the range of users to apply the same system settings and translation settings.
Value	Either of the following; - <b>AllUsers</b> : Apply to all users on the computer which ASFALIS SmartLauncher is installed to - <b>OnlyCurrentUser</b> : Apply to the installation user only
Default value	AllUsers
Note	-
Example	<code>setup.exe /s /v"/qn" /v"APPLICATION_USERS_ADT=AllUsers"</code>

- **PREFERENCE\_INITIAL\_DATA\_FOLDER**

Description	Specify the folder path to the configuration files ("preference_v1.json" and "user_environment.bat"). Those files will be copied to; <ul style="list-style-type: none"> <li>When "AllUsers" is set for "APPLICATION_USERS_ADT": %PUBLIC%\Documents\Elysium\ASFALIS SmartLauncher</li> <li>When "OnlyCurrentUser" is set for "APPLICATION_USERS_ADT": %LOCALAPPDATA%\Elysium\ASFALIS SmartLauncher</li> </ul>
Value	Absolute folder path
Default value	Not specified (Empty string)
Note	Configuration files will be copied to the following folder when this argument is not set. %PUBLIC%\Documents\Elysium\ASFALIS SmartLauncher

- **INSTALL\_<ASFALIS Component key name>**

Description	Specify whether to install ASFALIS Component specified by the Component key name.
Value	Either of the following; 0: Don't install the specified ASFALIS Component 1: Install specified ASFALIS Component
Default value	0
Note	Replace <ASFALIS Component key name> by the key name below. (Remove < > as well.) Specify this argument per ASFALIS Component to install. ASFALIS Components that are not specified with this argument will not be installed. Please refer to the list below for the ASFALIS Component key names.
Example	<code>setup.exe /s /v"/qn" /v"INSTALL_NX=1" /v"INSTALL_CATIAV5=1"</code>

ASFALIS Component key name	ASFALIS Component
INSTALL_ACIS	ACIS
INSTALL_ASMEDIT	Assembly Editor
INSTALL_ATTREDIT	Attribute Editor
INSTALL_CATIAV4	CATIA V4
INSTALL_CATIAV5	CATIA V5



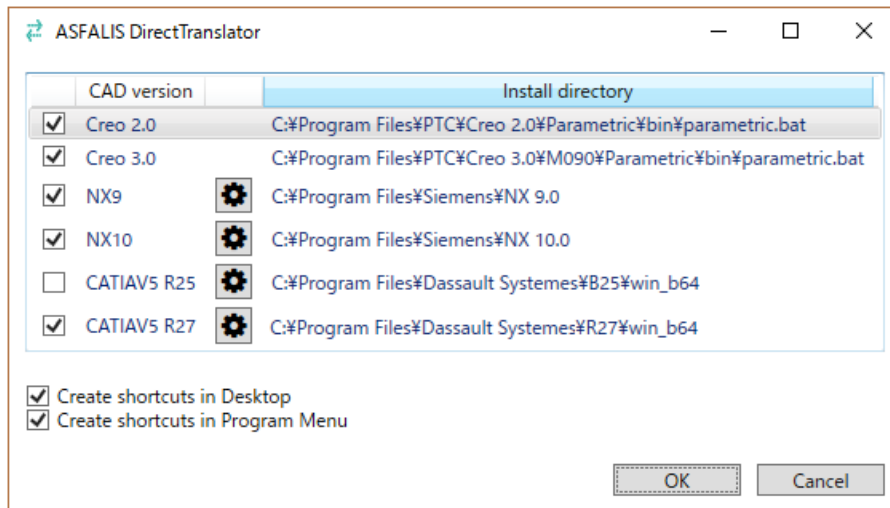
ASFALIS Component key name	ASFALIS Component
INSTALL_3DEXPERIENCE	3DEXPERIENCE
INSTALL_CFIO	CADmeister (Standalone)
INSTALL_CREO	Creo Parametric
INSTALL_DSACREO	Creo Parametric (Standalone)
INSTALL_DSANX	NX (Standalone)
INSTALL_DSAV5	CATIA V5 (Standalone)
INSTALL_ENFCHECKER	PDQ Checker
INSTALL_ENFEDITOR	ENF Editor
INSTALL_ICAD	iCAD
INSTALL_IDEAS	NX I-deas
INSTALL_IGES	IGES
INSTALL_INTERCHECK	Interference Checker
INSTALL_INVENTOR	Autodesk Inventor
INSTALL_JT	JT
INSTALL_NX	NX
INSTALL_OSD	Creo Elements/Direct
INSTALL_PARASOLID	Parasolid
INSTALL_PLMXML	PLM XML
INSTALL_POLYGONOPTIMIZE	Polygon Optimizer
INSTALL_SIMPLIFY	Geometry Simplifier
INSTALL_SOLIDWORKS	SOLIDWORKS
INSTALL_STEP	STEP
INSTALL_STEPBOM	STEPBOM
INSTALL_STL	STL
INSTALL_VALIDATION	CAD Validator
INSTALL_XVL	XVL

ASFALIS Component key name	ASFALIS Component
INSTALL_3DPDF	3D PDF
INSTALL_3DXML	3DXML

## 2.3. Initial Settings for CAD Plug-in

ASFALIS SmartLauncher detects CAD systems automatically from the registry, and they will be listed in the dialog along with their installation folder path. Please note that it may fail to detect automatically when;

- The same CAD version is installed multiply within a single computer
- The registry keeps information of old CAD systems



1. Click (⚙️) icon next to the CAD system name in the dialog to specify the environment file for CAD systems (CATIA V5: ENV file / NX: custom\_dirs.dat).
2. Click [Cancel] in the dialog to modify the installation environment of CAD systems.



Please note that the following checkbox options will be effective for the CAD versions checked in above dialog only.

- Create shortcuts in Desktop
- Create shortcuts in Program Menu

3. [Preference] dialog will appear where you can modify the information on detected CAD versions, and add CAD versions that were not detected automatically.



Please note that CAD systems installed without using the installer will not be in the list in the above dialog.

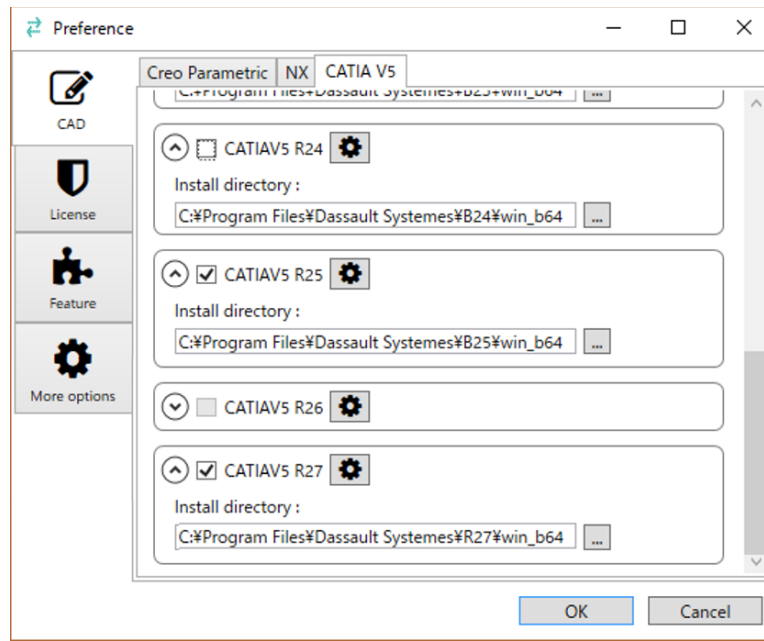
4. You can modify installation environment of CAD systems anytime from;

[All Programs] > [Elysium ASFALIS SmartLauncher] > [Preference]



Please note that this option is effective for the latest three officially supported CAD versions only.

[Create shortcut to start CAD...] in [Preference] dialog will be available for the latest three officially-supported CAD versions only. Please run from the Windows Explorer context menu for other CAD versions.



5. Once the information on installation environment of CAD systems are set properly, click [OK] and move to "[3, Start ASFALIS SmartLauncher](#)".



Use the checkbox for each CAD version to enable/disable the data translation to/from that version.

- [All Programs] > [Elysium ASFALIS SmartLauncher] > [Preference]

## 2.4. Initial Settings for CAD Systems

Please refer to "ASFALIS\_manual\_ENG.pdf"– 3.1 Adapter for the specification and restrictions for each CAD adapters.

### 2.4.1. Creo Parametric (Plug-in)

- Please note that two seats of license on Creo Parametric will be required when launching to/from Creo Parametric translation;
  - Using a plug-in adapter
  - "On-memory translation" option disabled
  - With Creo Parametric license file which does not include the keyword "DUP\_GROUP"

because ASFALIS SmartLauncher newly launches Creo Parametric regardless whether Creo Parametric is already running.

(ASFALIS SmartLauncher uses currently-opened Creo Parametric when on-memory translation is enabled.)

- Please note that the new adapter will be used even when it is set to use the legacy adapter when launching to/from Creo Parametric translation;
  - Using a plug-in adapter
  - "On-memory translation" option enabled
  - From CAD user interface

(The translation result may differ slightly between the legacy adapter and the new adapter.)

### 2.4.2. SOLIDWORKS (Plug-in)

- Please note that the new adapter will be used even when it is set to use the legacy adapter when launching to/from SOLIDWORKS translation;
  - Using a plug-in adapter
  - From CAD user interface
- Please note that you cannot use two or more versions of SOLIDWORKS at the same time. Also, ASFALIS does not provide a functionality to specify the SOLIDWORKS version to use for the translation. (It automatically uses the last-used version when multiple versions of SOLIDWORKS are installed on the same computer.)
- When UAC (User Account Control) is turned on in Windows 8.1 and Windows 10, you should set add-in program before using SOLIDWORKS adapter.
  1. Turn UAC off temporarily and restart the computer.
  2. Start SOLIDWORKS to run as administrator, select [Tools] > [Macro] > [Edit] menu and open the following macro file "load\_addin.swp".
    - <Installation directory of SOLIDWORKS Adapter>\load\_addin.swp  
e.g., D:\bin\SwExe\win\2015\load\_addin.swp
  3. Edit load\_addin.swp and replace the value of sAddinName with full path of the original dll as below.
    - Before:

```
Const sAddinName As String = "sw2nut.dll"
```

- After (example):

```
Const sAddinName As String = "D:\bin\SwExe\win\2015\sw2nut.dll"
```

4. Run load\_addin.swp.
  5. Select [Tools] > [Add-Ins] menu of SOLIDWORKS and confirm if "Sw2nutAddin" is displayed in the Add-ins window.
  6. Turn UAC on and restart the computer.
- ASFALIS SmartLauncher (Plug-in) for SOLIDWORKS will not appear on the menu just by installing it. Follow the steps below to enable it.
    1. Launch SOLIDWORKS by using "ASFALIS SmartLauncher for SOLIDWORKS 20\*\*". (20\*\* is a version of SOLIDWORKS)
    2. Select [Tools] > [Add-Ins] from the menu.
    3. In "Add-Ins" dialog, enable "Elysium Tool for SOLIDWORKS".
    4. Click [OK] to close the "Add-Ins" dialog.

### 2.4.3. Inventor (Plug-in)

- Please note that ASFALIS SmartLauncher is not designed to identify multiple versions of Inventor. So, in case multiple versions of Inventor is available, the version which was running last will be automatically used for the data translation.

### 2.4.4. CADmeister (Standalone)

- Please ensure to place "CRESTAM" folder in ASFALIS SmartLauncher installation package to the root folder of the drive where ASFALIS SmartLauncher installation folder is.
  - E.g., When ASFALIS SmartLauncher installation folder is under C drive

C:\CRESTAM

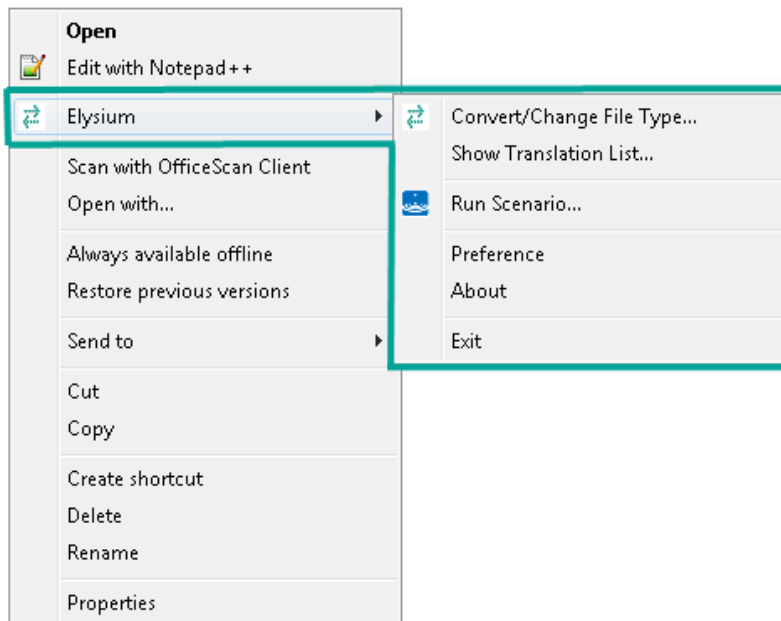
## 3. Start ASFALIS SmartLauncher

This chapter shows the instructions on how to run ASFALIS SmartLauncher.

### 3.1. From Windows Explorer Context Menu

Start standalone type of ASFALIS SmartLauncher from the context menu of Windows explorer as follows.

1. Right-click a file to translate, and then select [Elysium] > [Convert/Change File Type] from the context menu.
2. "Open" dialog will appear where you can specify the directory and the filename to save the result data as, and the file format to translate to.



### 3.2. From CAD User Interface

Start ASFALIS SmartLauncher (From CAD User Interface) either from;

#### ■ Windows menu

Run the batch file of CAD system / version to run.

- [All Programs] > [Elysium ASFALIS SmartLauncher] > [ASFALIS SmartLauncher for \_ (CAD system name)\_(Version)]

#### ■ Desktop shortcut

Double-click the shortcut of CAD system / version to run.



Please note that ASFALIS SmartLauncher (From CAD User Interface) supports only certain versions of CAD. Please refer to the separate document "ASFALIS SmartLauncher Supported CAD Version" for more details about CAD versions where the ASFALIS SmartLauncher (From CAD User Interface) is supported. For other CAD versions, please use ASFALIS SmartLauncher (From Windows context menu).

ASFALIS SmartLauncher (From CAD User Interface) will be integrated into menu bar of CAD systems as below.

CAD	Where ASFALIS SmartLauncher (From CAD User Interface) is displayed
Creo	<p>The image shows the Creo CAD interface. The 'Elysium' menu is highlighted in the top bar. Below it, the 'Elysium' dropdown menu is shown, containing options like 'Import', 'Export', 'Run scenario', 'Show Translation List', and 'Preference'.</p>
NX	<p>The image shows the NX CAD interface. The 'Elysium' menu is highlighted in the top bar. Below it, the 'Elysium' dropdown menu is shown, containing options like 'Import', 'Export', 'Run scenario', 'Show Translation List', and 'Preference'.</p>
SOLIDWORKS	<p>The image shows the SOLIDWORKS CAD interface. The 'Elysium' menu is highlighted in the top bar. Below it, the 'Elysium' dropdown menu is shown, containing options like 'Export', 'Import', 'Show Translation List', 'RunScenario', 'Preference', 'Run DFMSenario', and 'Open Result'.</p>

## 3.3. How to Customize CAD Environment to Use CAD Plug-in

Below are the ways to use ASFALIS SmartLauncher (run from a CAD menu) either in a customized CAD environment (including NX in Teamcenter environment) or via a default CAD launch shortcut.

### 3.3.1. For NX

1. For NX environment where custom applications are integrated, specify the path of ASFALIS SmartLauncher installation folder (see below) in "UGII\_CUSTOM\_DIRECTORY\_FILE" (such as "custom\_dirs.dat") which is used when starting customized NX.

- <ASFALIS SmartLauncher Installation Folder>\cad\_plugin\114\<NX version>

Example:

```
C:\Program Files\Elysium\ASFALIS SmartLauncher\cad_plugin\114\NX1953
```



Please note that when launching NX via Teamcenter and running DFM Scenario, the PowerShell path will disappear in the batch that starts Teamcenter Rich Client, preventing dscheck from running. To run successfully, specify the PowerShell folder in the environment variable "AUX\_PATH" as shown below.

```
AUX_PATH=C:\WINDOWS\System32\WindowsPowerShell\v1.0\
```

### 3.3.2. For Creo Parametric

1. Create "protk.dat" file in any place. Enter the following contents in this file. (For users who have installed ASFALIS SmartLauncher in the default folder, and using Creo Parametric 6.0 with it)

```
NAME ELY_CREOP_CONVERTER_PLUG_IN
EXEC_FILE C:\Program Files\Elysium\ASFALIS
SmartLauncher\cad_plugin\104\Creo6\dll\PDMPProe.dll
TEXT_DIR C:\Program Files\Elysium\ASFALIS
SmartLauncher\cad_plugin\104\Creo6\text_fbt
REVISION Wildfire
STARTUP dll
END
```

2. Add the following line to "config.pro" that Creo Parametric loads at startup. (By default, <Creo Parametric Installation folder>\Common Files\text\config.pro will be loaded)

```
PROTKDAT <Full path of protk.dat, created in step 1.>
```



## 4. Utilize ASFALIS SmartLauncher

### 4.1. Translate CAD Data

#### ■ ASFALIS SmartLauncher (From Windows context menu)

Right-click a file to translate in Windows Explorer and select [Convert/Change File Type] from the context menu to translate CAD data to specified CAD format.

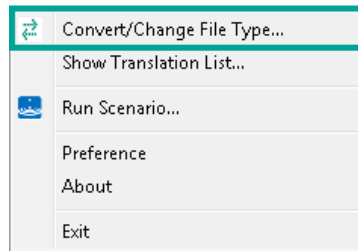


Fig 1. ASFALIS SmartLauncher (From Windows context menu) menu

#### ■ ASFALIS SmartLauncher (From CAD User Interface)

Select [Elysium] > [Export]/[Import] from the menu bar, and then specify the file to open, or the directory and the filename to save the result data as, and the file format to translate to in the dialog.

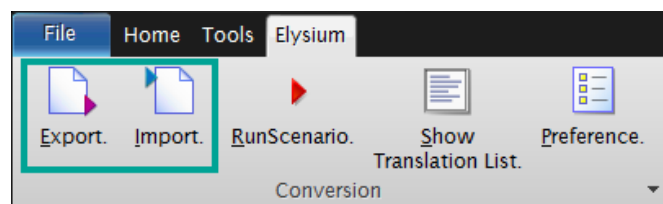


Fig 2. ASFALIS SmartLauncher (From CAD User Interface) menu (NX)

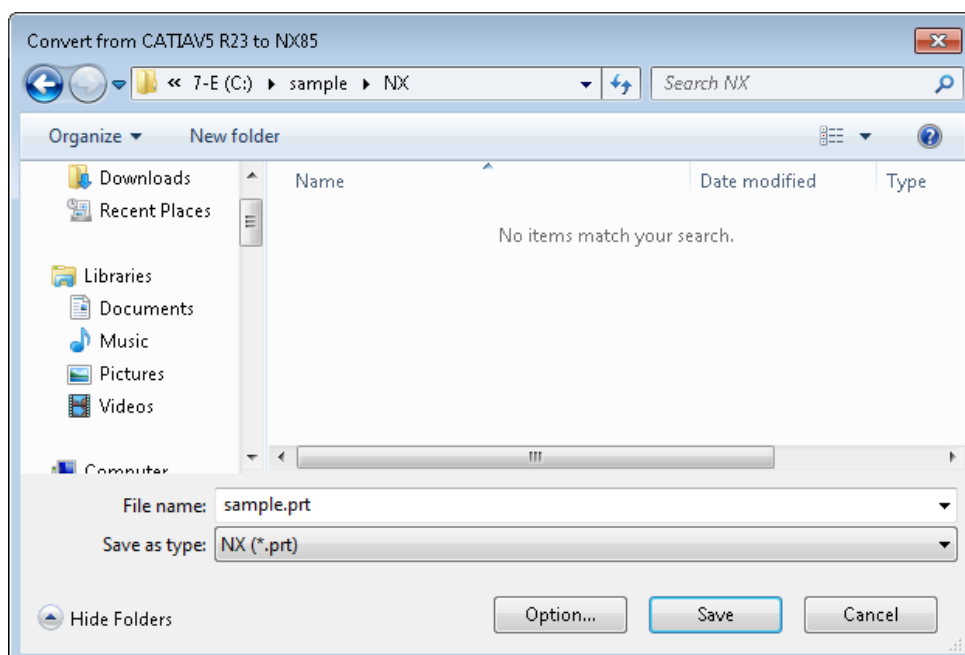


Fig 3. File dialog when translating from CATIA V5 to NX

You can translate;

- Saved data
  - By opening in the CAD system, and then export to specified CAD format from [Elysium] > [Export]
  - By importing from [Elysium] > [Import] in the CAD system to translate to
- Current data (On-memory data)
  - By exporting to specified CAD format from [Elysium] > [Export]



A dedicated license is required to perform translation or check. If there is no license, the process will stop with an error.

Click [Option] to customize the translation settings for your needs (Skip if unnecessary). Then click [Open]/[Save] button in the dialog to run the data translation.

- **Basic:** You can change the elements to translate, CAD version to use for the data translation etc. only
- **Advanced:** You can customize the settings on translation and geometry healing in detail. (For advanced users)

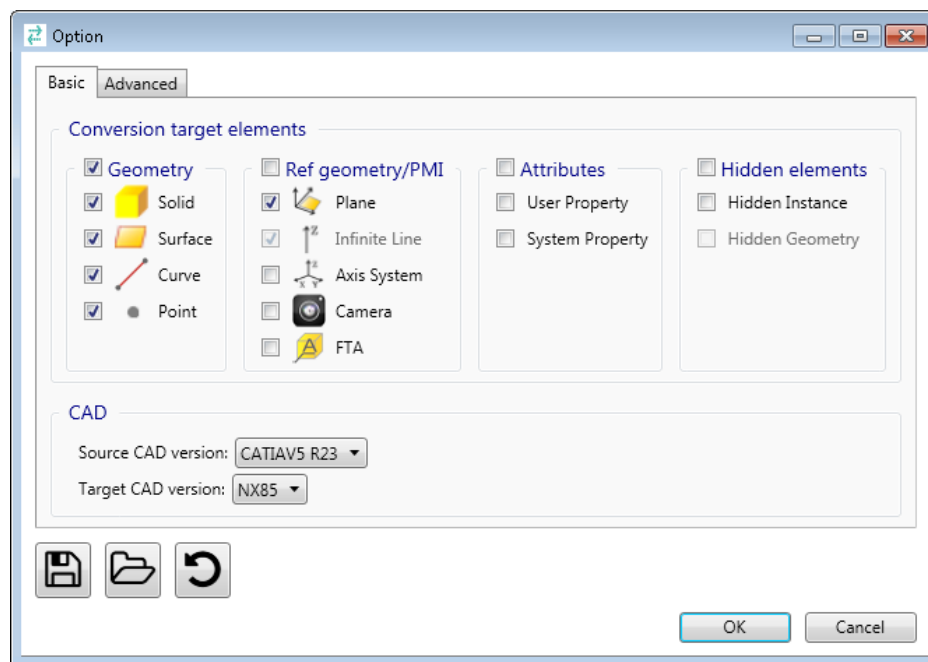


Fig 4. Basic setting dialog

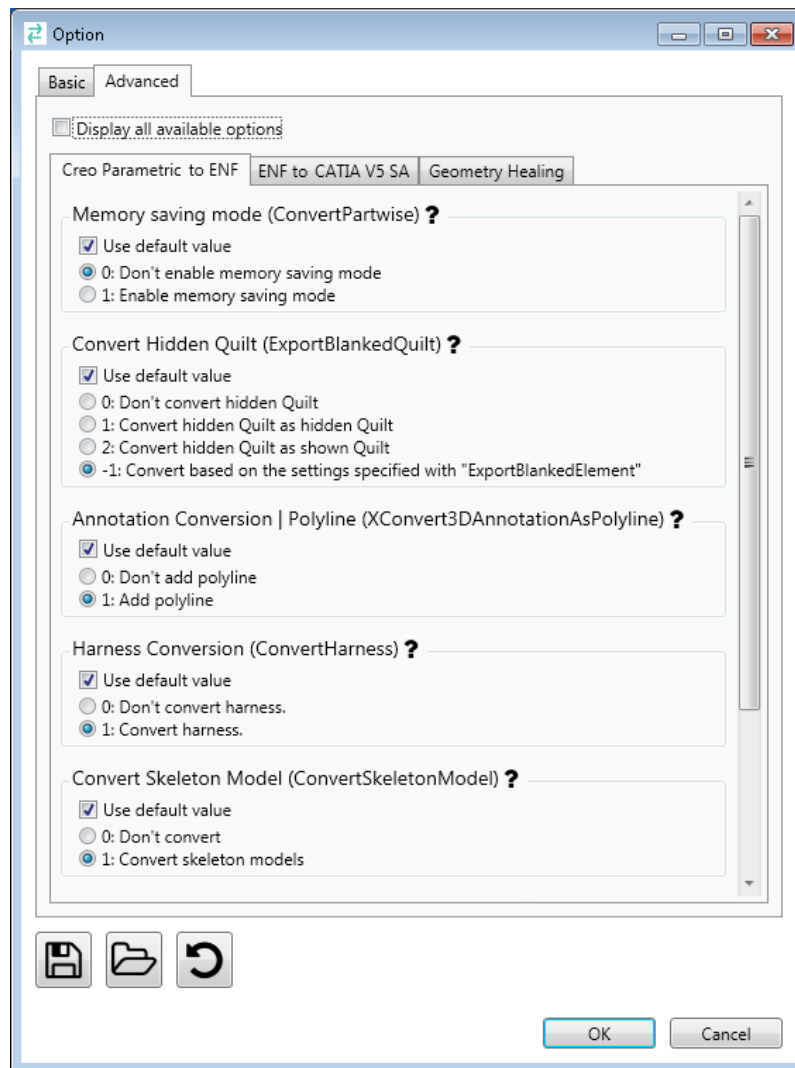
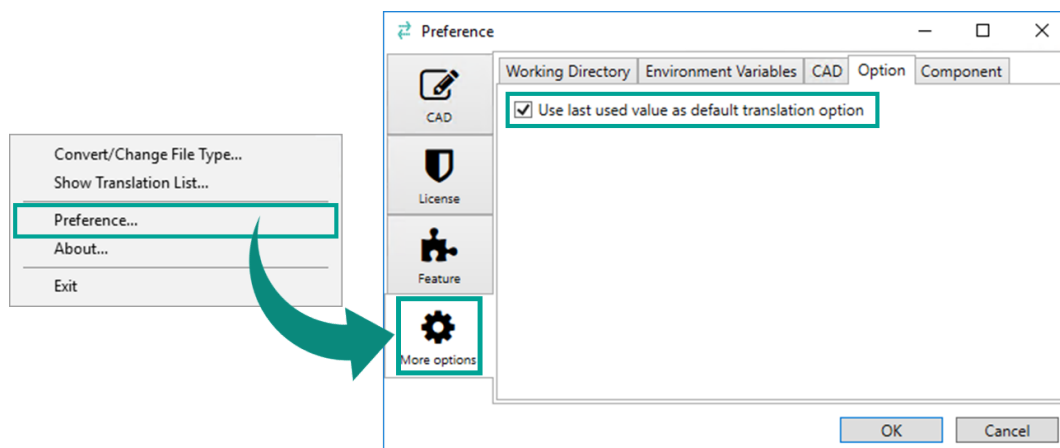


Fig 5. Advanced setting dialog

Check "Auto-save as default when modifying translation settings" option in [Preference] (context menu) > [More options] > [Option] to update the default settings when modifying translation settings.

Default settings will no longer be updated when checked off. (Then-current settings will be set as the default settings.)

Click [Reset Option] in the "Option" dialog to restore the ASFALIS SmartLauncher initial settings.



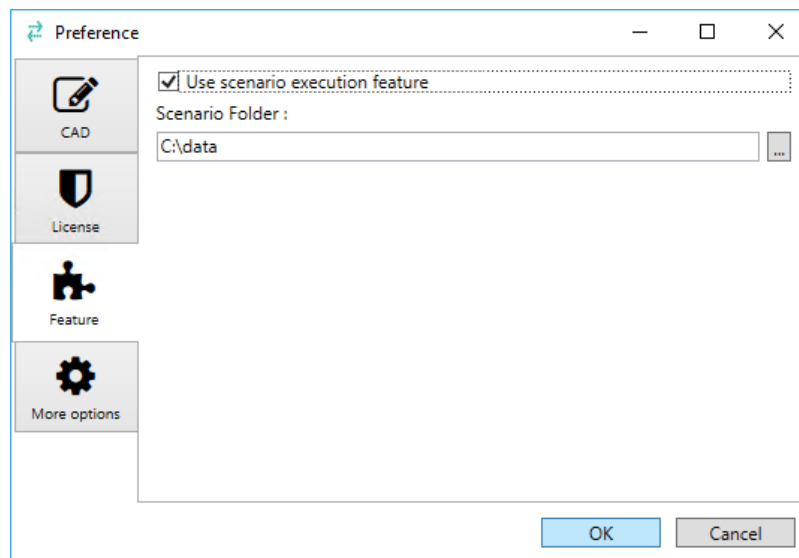
## 4.2. Run ASFALIS Scenarios

You can utilize ASFALIS Scenarios in ASFALIS SmartLauncher.

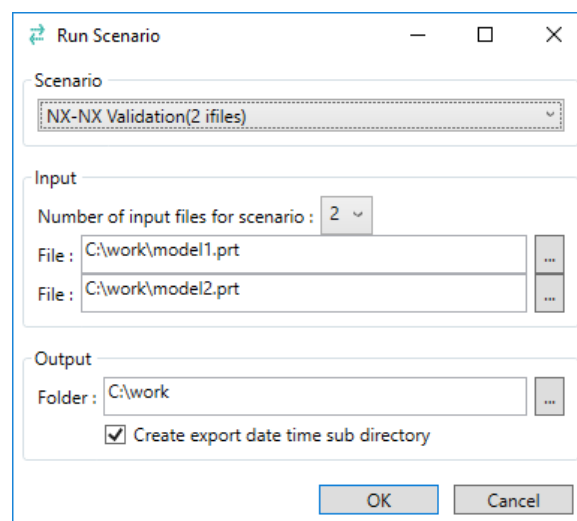
1. Select [Run Scenario] as follows:

- ASFALIS SmartLauncher (From Windows context menu)  
Right-click a file in Windows Explorer and select [Run DFM\_Scenario] from the context menu.
- ASFALIS SmartLauncher (From CAD User Interface)  
Select [Elysium] > [Run DFM\_Scenario] from the menu.

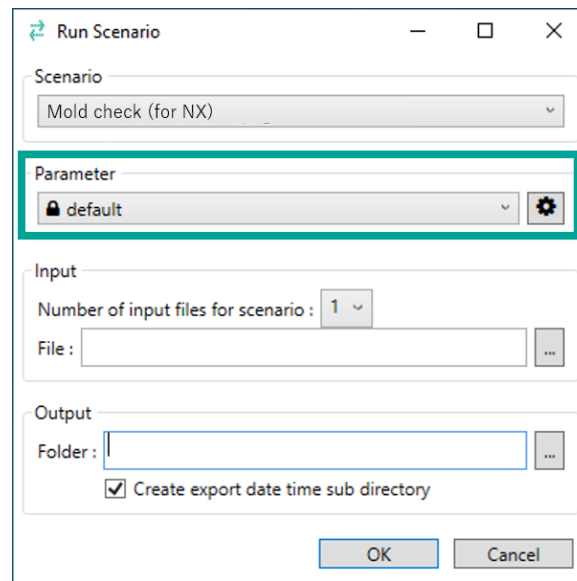
If it is not displayed, check [Use ASFALIS scenario execution feature] option in [Elysium ASFALIS SmartLauncher] > [Preference] > [Feature] to enable using ASFALIS Scenarios. You can also change the folder where the Scenarios are stored in the same dialog.



2. Specify the Scenario to run, and the folder to save the result data in the following dialog, and then click [OK].



When selecting a Scenario for DFM Studio which has set parameter, you will be able to select the parameter set at the same time.



Also, click the gear icon to edit the content of the parameter set. However, you are required to have Microsoft Excel installed before making any edits.



By default, only one parameter set is registered. Your system administrator can add more if necessary.



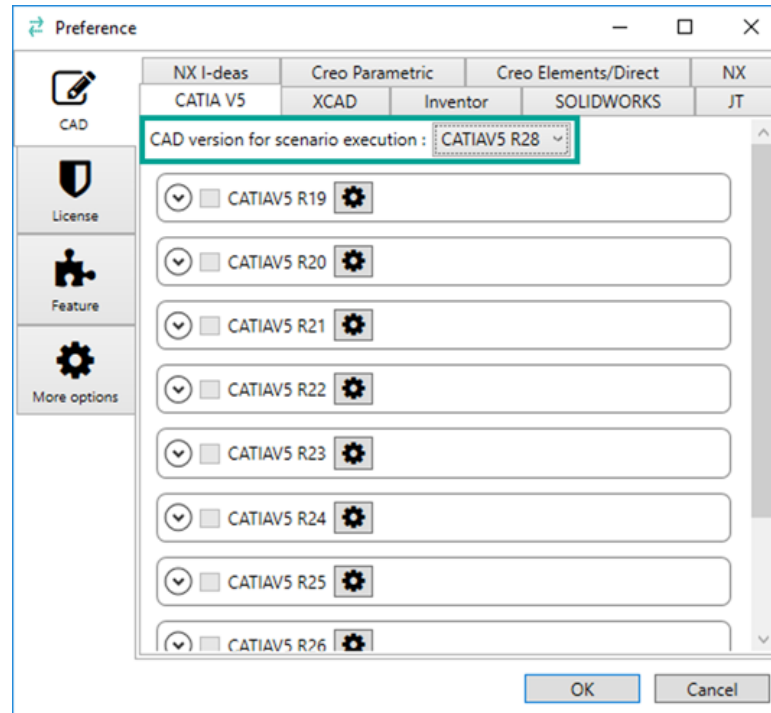
- Input files :
  - From Windows context menu: The file you selected when running [Run Scenario] from the context menu.
  - From CAD User Interface: The data opened in the CAD system when running [Run Scenario] from the menu.



- Please ensure to select input file(s) exactly as defined in the Scenario (the type and the number of input files as well as the order to select them), otherwise, the process will abend. E.g., when running a Scenario of CAD validation with:
  - Job Input 1: NX model
  - Job Input 2: CATIA V5 model

ensure to select, first, a NX model, and second, a CATIA V5 model while pressing [Shift] key, and then select [Run Scenario] from the context menu. If you select a CATIA V5 model first, the process will abend.

- It is recommended to name Scenarios including the information of input file type because all available Scenarios will be shown in the pull-down menu regardless of the input file type.
- Specify the CAD version to use from [Preference] > [CAD] tab > [CAD version for scenario execution]



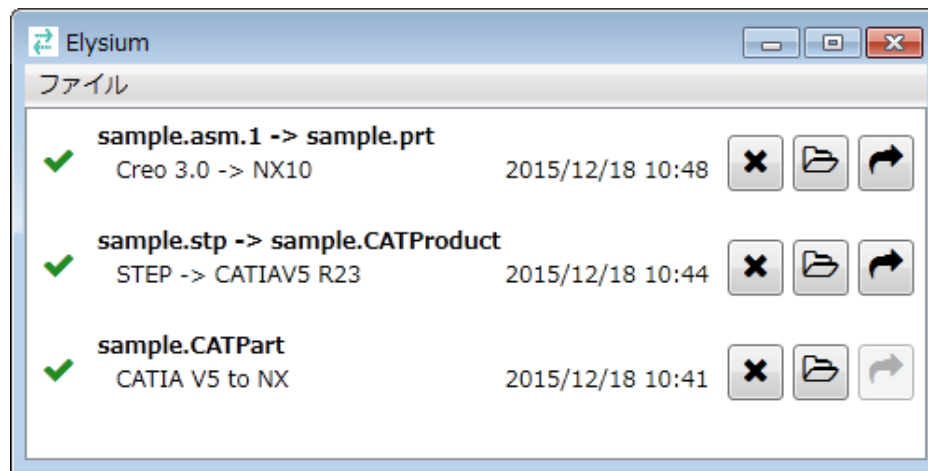
## 4.3. Check Progress and Results

The following window will appear when data translation or Scenario is started.

You can;

- Check the progress of each process
- Open the output folder of completed process
- Open the result file in the CAD systems

When running a check Scenario for DFM Studio, select the translation result to start DFM Inspector, and you can confirm the check result.



Start your CAD beforehand when selecting the translation result from the translation list and opening it directly in CAD.



You can open this window anytime from ASFALIS SmartLauncher menu bar.

## 5. Uninstallation

To uninstall ASFALIS SmartLauncher, follow the steps below.

1. Exit the translation list if it is running. To do so, either click [Exit] from the file menu of the translation list, or right-click the icon in the task tray and click [Exit].
2. From Windows start menu, select [Settings](Gear mark).
3. Then select [Apps].
4. From the list of applications displayed in "Apps & features", select "Elysium ASFALIS SmartLauncher" to uninstall.



Please note that if you uninstall while the translation list is still running, some files may not be deleted correctly.



## 6. Troubleshooting

### Q1: Cannot start ASFALIS SmartLauncher

The installation of ASFALIS SmartLauncher may not be completed properly. Please uninstall, and then reinstall ASFALIS SmartLauncher.

### Q2: Translation fails when translating a model registered in Windchill using Creo Parametric which is connected to Windchill

Please save the model to translate in a network / local directory, and translate using that model.

### Q3: Cannot translate CAD data /CAD format (file type) to translate is not displayed

Please confirm that necessary licenses are registered properly.

### Q4: Translation abends / not completed

Please check whether this is a model-dependent issue by trying a data translation of a simple model.

- **When it is not model-dependent** (Error occurs with any model)

Please confirm that settings for CAD systems are configured properly when using CAD Plug-in adapters. Please refer to [2.4, "Initial Settings for CAD Systems"](#) for the details.

- **When it is model-dependent** (Error occurs with specific model only)

Please contact to Elysium or its authorized resellers and provide the following;

- Error model
- Translation log file  
Translation log is output to the work folder. So please send the following folder;
- <ASFALIS SmartLauncher Work Folder (\*1)>\<Auto-created Folder (\*2)>
  - (\*1): Work folder is specified in [Elysium ASFALIS SmartLauncher] > [Preference] > [More options]. Or "canvas" folder created under the folder specified with environment variable "TEMP" by default if you have not changed.  
E.g., C:\Users\username\AppData\Local\Temp\canvas
  - (\*2): This is created automatically for each translation process, and named with random 8 characters.

You can also open the translation log file, or open the corresponding work folder in "Translation List" window. Right-click the error process and select from the context menu.

### Q5: Don't get the same results between "From Windows context menu" and "From CAD User Interface"

Please note that the translation process differs between the on-memory translation from CAD User Interface and saved-file translation from Windows context menu, and the translation result will not be exactly the same.

Please disable on-memory mode from [Elysium ASFALIS SmartLauncher] > [Preference] to

obtain exactly the same results.

**Q6: Failing to export or scenario execution in Teamcenter NX environment**

Please enable "Use on memory mode for export" from [Preference] dialog > [More options] and try translation. Please note that importing in Teamcenter NX environment is not supported.

All rights reserved by Elysium or the original author of this material. The content may not be edited, reproduced, distributed, transmitted, displayed, published, broadcast, sold or lent without the prior permission of the author.