



DFM Studio

DFM Studio Parameter Settings Tool

User's Manual

January 2022

Elysium Co. Ltd.

Index

1. About This Document	1
2. System Requirements	2
3. Function	3
3.1. Run Parameter Settings Tool.....	3
3.2. Edit Parameter Value	5
3.2.1. Enable/Disable Check Criterion.....	5
3.2.2. Edit Tolerance	5
3.2.3. Enable/Disable All Check Criteria	5
3.3. Save Parameter Settings.....	6
3.3.1. Save as New Parameter File.....	6
3.3.2. Overwrite Existing Parameter File.....	7
3.4. Other Function	7
3.4.1. Finish Editing.....	7
3.4.2. Delete Parameter File	7
3.5. View Version Information	8

1. About This Document

This document provides information about how to edit parameter values (enable/disable check criteria, and tolerances) using Parameter Settings Tool, save parameter settings as a parameter file (*.ini) to use for DFM check in DFM Studio, etc. This manual is intended for users who need to customize the parameter settings for their needs based on parameter files provided by the administrator.

Parameter Settings Tool is available for DFM check on plastic models (For DFM check / For report export), and sheet metal models (For DFM check / For report export) as follows:

Parameter Settings Tool (For User / Plastic / DFM Check)

dfms_param_set_plastic_check_en.xlsm

Parameter Settings Tool (For User / Plastic / Report)

dfms_param_set_plastic_report_en.xlsm

Parameter Settings Tool (For User / Sheet Metal / DFM Check)

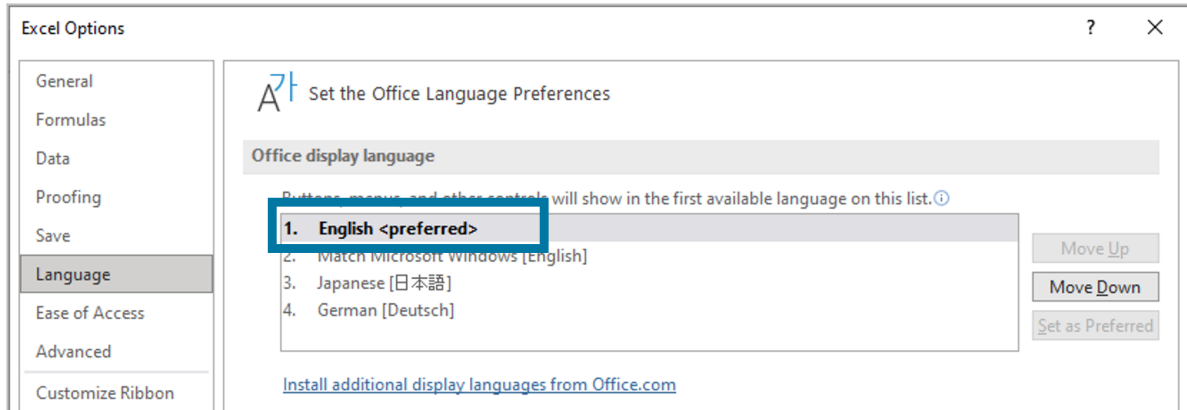
dfms_param_set_sheet-metal_check_en.xlsm

Parameter Settings Tool (For User / Sheet Metal / Report)

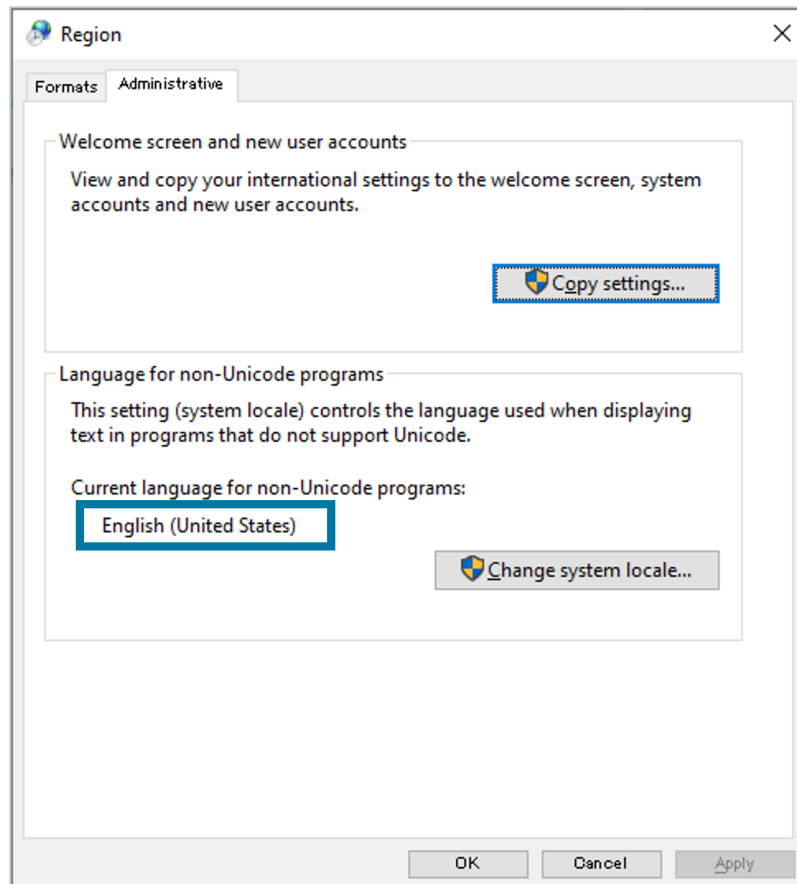
dfms_param_set_sheet-metal_report_en.xlsm

2. System Requirements

- Environment capable of running Excel 2016 equivalent (Microsoft 365)
 - Allowed to use macros.
 - English is preferred at [File] > [Options] > [Language] > [Office display language] in Microsoft Excel.




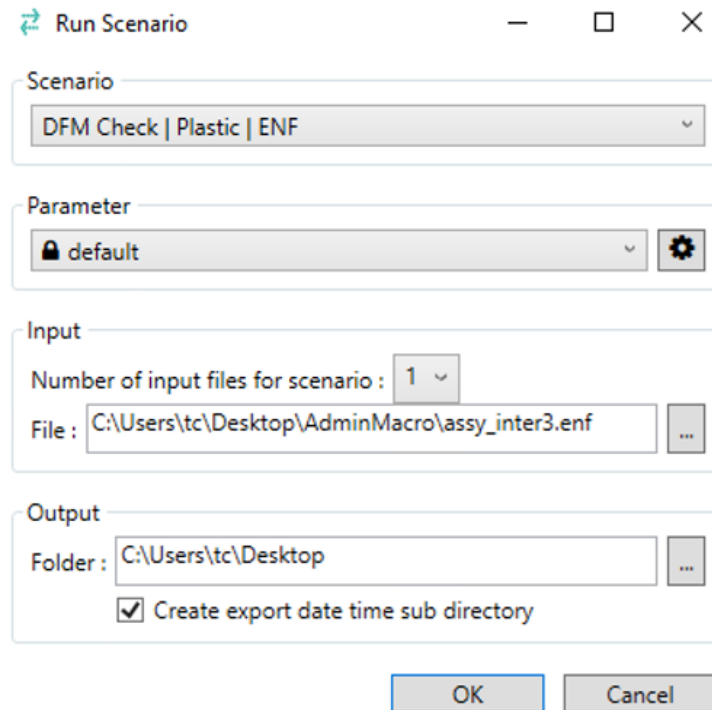
- English is selected at [Control Panel] > [Clock and Region] > [Region] > [Administrative] tab > [Language for non-Unicode programs].



3. Function

3.1. Run Parameter Settings Tool

1. Select a Scenario and a parameter file in [Run Scenario] dialog of ASFALIS Smart Launcher, and then click  to launch Parameter Settings Tool.

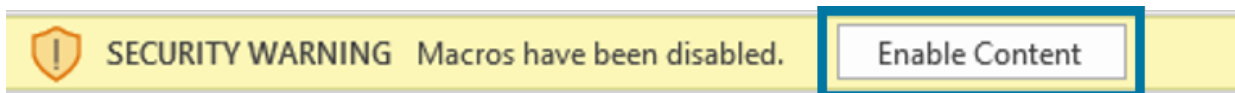


The selected parameter file will be loaded to Parameter Settings Tool automatically.

2. Edit the parameter settings in Parameter Settings Tool.

DFM Studio Parameter Settings Tool					
Please refer to "Check Criteria Guide" for the details of each parameter.					
<div> <div>Enable/Disable All</div> <div>Save As</div> <div>Overwrite</div> <div>Exit</div> <div>Delete Parameter File</div> <div>About</div> </div>					
On/Off	Category	Parameter type	Parameter name	Value	
On	1.1 Thick wall	For DFM check	Thick wall Max. thickness tol	3.5	
On	1.1 Thick wall	For DFM check	Thick wall Max. deviation (+) tol from standard thickness	1.2	
On	1.1 Thick wall	For feature recognition	Thick wall Target by min. angle tol between faces	130.0	
On	1.1 Thick wall	For feature recognition	Whether to calculate deviation (+) from standard thickness	FALSE	
On	1.1 Thick wall	For report	Whether to include in report	TRUE	
On	1.2 Thin wall	For DFM check	Thin wall Min. thickness tol	1.1	
On	1.2 Thin wall	For DFM check	Thin wall Max. deviation (-) tol from standard thickness	0.8	
On	1.2 Thin wall	For feature recognition	Thin wall Target by min. angle tol between faces	130.0	
On	1.2 Thin wall	For feature recognition	Thin wall Whether to exclude tips	FALSE	
On	1.2 Thin wall	For feature recognition	Exclude tip Max. creepage distance tol by ratio to wall thickness	3.0	
On	1.2 Thin wall	For feature recognition	Whether to calculate deviation (-) from standard thickness	FALSE	
On	1.2 Thin wall	For report	Whether to include in report	TRUE	
On	2.1 Boss	For DFM check	Boss Min. draft angle tol	0.5	
On	2.1 Boss	For DFM check	Boss Max. side to base thickness ratio tol	0.8	

3. Click [Enable Content] in the message bar to enable macros in case a security warning message appears.



- Please ensure that the parameter file is encoded in UTF-8 without BOM.
- Please note that loading will be canceled, and Parameter Settings Tool will be closed automatically when the selected parameter file is invalid. Please contact to your administrator in such cases.
- Please note that you can load parameter files prepared for DFM Studio v2.0 or later only.

3.2. Edit Parameter Value

Please refer to "Check Criteria Guide" (another document) for the explanation of check criteria.

3.2.1. Enable/Disable Check Criterion

1. Double-click a cell in column B (On/Off) to enable/disable the corresponding parameter.



- Cells in column B (On/Off) and column H (Value) will turn pink when enabled, and be grayed out when disabled.
- Please note that that will also enable/disable parameters that belong to the same category shown in column C (Category).
- Please note that "For feature recognition" parameters are mandatory to DFM check, and are always enabled.

3.2.2. Edit Tolerance

1. Double-click a cell in column H (Value (Editable)), and edit the value.

</

3.2.3. Enable/Disable All Check Criteria

1. Click [Enable/Disable All] to enable/disable all check criteria.

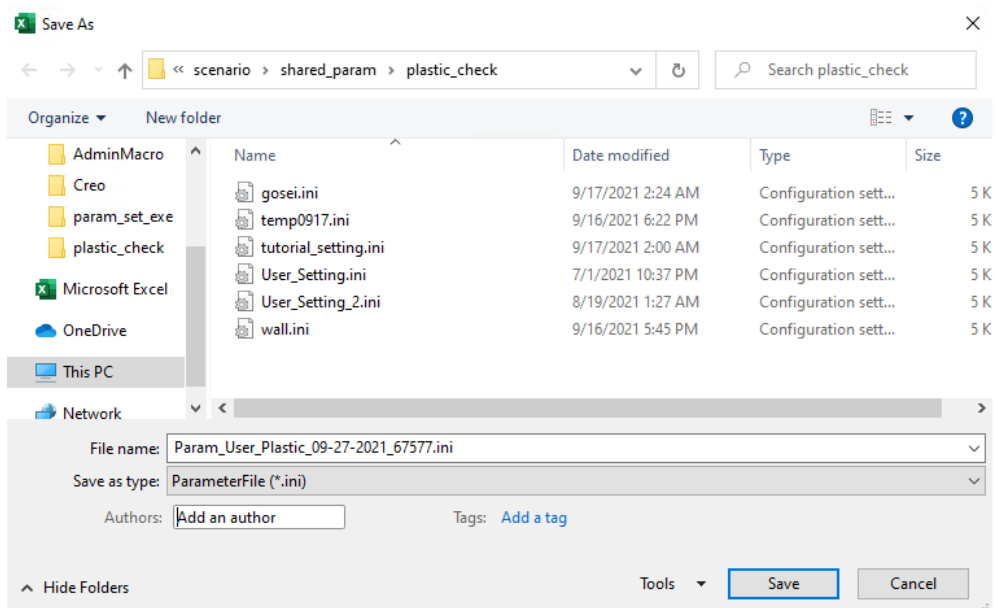


- All cells in column B (On/Off) and column H (Value) will turn pink when enabled, and be grayed out when disabled.

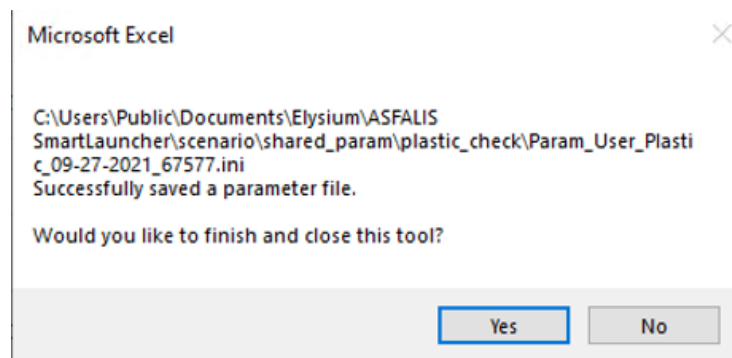
3.3. Save Parameter Settings

3.3.1. Save as New Parameter File

1. Click [Save As] to save the parameter settings set in column B (On/Off) and column H (Value) as a new parameter file.
2. Specify the folder and the filename to save as, and then click [Save] in the dialog.




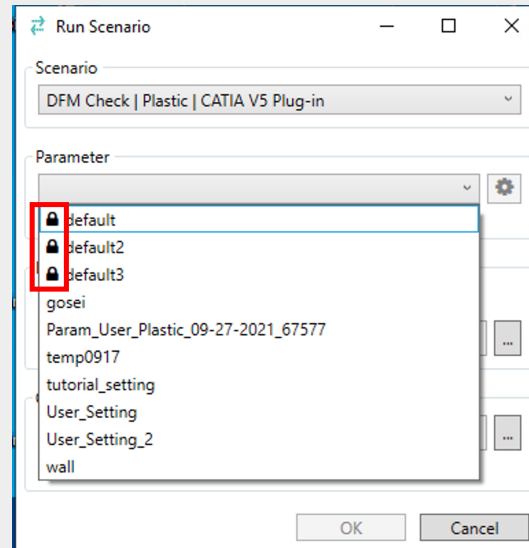
- The parameter file will be saved in UTF-8 without BOM encoding.
- You can save parameter files to User folder registered to ASFALIS SmartLauncher (a local folder) only.



3.3.2. Overwrite Existing Parameter File

1. Click [Overwrite] to overwrite the currently-loaded parameter file by values in column B (On/Off) and column H (Value).

-  on the left of parameter settings means that it is registered by System Admin and is uneditable.



- The parameter file last-saved with [Overwrite] will be automatically set as the target file to overwrite.

3.4. Other Function

3.4.1. Finish Editing

1. Click [Exit] to finish editing parameter files, and close Parameter Settings Tool.



- A warning message will appear asking you whether to save the edits when there are unsaved changes.

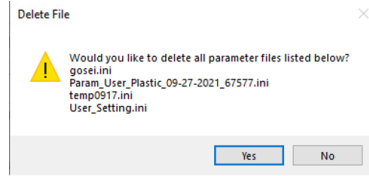
3.4.2. Delete Parameter File

1. Click [Delete Parameter File] to delete parameter files.
2. Select parameter file(s) to delete in the dialog.



- Select while pressing [Ctrl] key to multi-select.

3. Click [Open] in the dialog, and the following confirmation message will appear.



4. Click [Yes] to delete all listed parameter files, or [No] to return to the dialog to select parameter files.



- You can delete parameter files in User folder (a local folder under either of the followings depending on the settings) only.
 - %PUBLIC%\Documents\Elysium\ASFALIS SmartLauncher\scenario\shared_param
 - %LOCALAPPDATA%\Documents\Elysium\ASFALIS SmartLauncher\scenario\shared_param

3.5. View Version Information

1. Click [About] to view the version information of Parameter Settings Tool.

Microsoft Excel X

Version : V1.0.0

OK

All rights reserved by Elysium or the original author of this material. The content may not be edited, reproduced, distributed, transmitted, displayed, published, broadcast, sold or lent without the prior permission of the author.