



# DFM Studio

## **DFM Studio Installation Guide**

Elysium Co. Ltd.

January 2022

# Index

1. Overview .....	1
1.1. List of Applications to Install .....	1
1.2. Install Sentinel RMS License Manager .....	3
2. With ASFALIS SmartLauncher .....	4
2.1. Install ASFALIS SmartLauncher .....	4
2.2. Prepare & Set Parameter File .....	5
2.2.1. Parameter Settings Tool .....	11
2.3. Install DFM Studio Inspector .....	12
2.3.1. Run DFM Studio Inspector .....	12
2.3.2. System Requirements .....	12
2.3.3. Install DFM Studio Inspector .....	13
2.3.4. Silent-install DFM Studio Inspector .....	16
2.4. Install 3DxSUITE Viewer (Model Viewer) .....	18
2.4.1. System Requirements .....	18
2.4.2. Manual Installation .....	18
2.4.3. Silent Installation .....	24
2.4.4. Launch .....	25
2.4.5. Exit .....	25
2.4.6. Uninstallation .....	25
3. With ASFALIS TransServer .....	27
3.1. Install ASFALIS Slave Node .....	27
3.1.1. Fresh Installation of ASFALIS Slave Node .....	27
3.1.2. DFM Studio Version-up Steps for DFM Studio Module .....	30
3.2. Install ASFALIS TransServer .....	31
3.2.1. Fresh Installation of ASFALIS TransServer .....	31
3.3. Set up ASFALIS TransServer .....	32
3.4. Install DFM Studio Inspector .....	34
3.4.1. Run DFM Studio Inspector .....	34
3.4.2. System Requirements .....	34
3.4.3. Install DFM Studio Inspector .....	35
3.4.4. Silent-install DFM Studio Inspector .....	38
3.5. Install 3DxSUITE Viewer (Model Viewer) .....	40
3.5.1. System Requirements .....	40

3.5.2. Manual Installation .....	40
3.5.3. Silent Installation .....	46
3.5.4. Launch .....	47
3.5.5. Exit .....	47
3.5.6. Uninstallation .....	47

# 1. Overview

This document explains how to install DFM Studio applications. Installers are provided per application.

You can run DFM Studio either via ASFALIS SmartLauncher or ASFALIS TransServer.

So, please install applications as appropriate considering the workflow, the number of licenses, load balancing, etc.

## 1.1. List of Applications to Install

The table below shows the installation package of each application and the installation guide.

Table 1. Installation package and installation guide

Application	Installation package	Installation guide
Sentinel RMS License Manager	license_server_for_dfmstudio_v#.#.#.zip	<ul style="list-style-type: none"><li>• <a href="#">1.2, “Install Sentinel RMS License Manager”</a></li><li>• Sentinel RMS License Manager Setup &amp; Quick Start Guide<ul style="list-style-type: none"><li>◦ Available in license_server_for_dfmstudio_v#.#.#\document</li></ul></li></ul>
DFM Studio Parameter Settings Tool	dfmstudio_v#.#.#_parameter_settings_tool.zip	<ul style="list-style-type: none"><li>• <a href="#">2.2, “Prepare &amp; Set Parameter File”</a></li><li>• DFM Studio Parameter Settings Tool Administrator’s Manual<ul style="list-style-type: none"><li>◦ Available in dfmstudio_v#.#.#_parameter_settings_tool\document</li></ul></li></ul>
ASFALIS SmartLauncher for DFM Studio	smartlauncher_for_dfmstudio_v#.#.#.zip	<ul style="list-style-type: none"><li>• <a href="#">2.1, “Install ASFALIS SmartLauncher”</a></li><li>• Elysium ASFALIS SmartLauncher for DFM Studio Installation Guide<ul style="list-style-type: none"><li>◦ Available in smartlauncher_for_dfmstudio_v#.#.#\document</li></ul></li></ul>



Application	Installation package	Installation guide
ASFALIS TransServer for DFM Studio	transserver_for_dfmstudio_v###.zip dfmstudio_v###_scenario_check.zip dfmstudio_v###_scenario_check_report.zip dfmstudio_v###_scenario_report.zip	<ul style="list-style-type: none"> <li>• <a href="#">3.2, “Install ASFALIS TransServer”</a></li> <li>• ASFALIS TransServer Installation Guide <ul style="list-style-type: none"> <li>◦ Available in transserver_for_dfmstudio_v###\document</li> </ul> </li> </ul>
ASFALIS Slave Node for DFM Studio	slavenode_for_dfmstudio_v###.zip	<ul style="list-style-type: none"> <li>• <a href="#">3.1, “Install ASFALIS Slave Node”</a></li> <li>• ASFALIS Slave Node Installation Guide <ul style="list-style-type: none"> <li>◦ Available in slavenode_for_dfmstudio_v###\document</li> </ul> </li> </ul>
DFM Studio Inspector	dfmstudio_v###_inspector.zip	<ul style="list-style-type: none"> <li>• <a href="#">2.3, “Install DFM Studio Inspector”</a></li> <li>• DFM Studio Installation Guide (This document)</li> </ul>
3DxSUITE Viewer (Model Viewer) for DFM Studio	modelviewer_for_dfmstudio_v###.zip	<ul style="list-style-type: none"> <li>• <a href="#">2.4, “Install 3DxSUITE Viewer (Model Viewer)”</a></li> <li>• DFM Studio Installation Guide (This document)</li> </ul>

## 1.2. Install Sentinel RMS License Manager

The licenses for Elysium products are managed by "Sentinel RMS License Manager" from Thales Corporation.

1. Copy "license\_server\_for\_dfmstudio\_v#.#.#.zip" to a local folder (e.g., C:\temp) of a computer to install to, and extract all.
2. Run the following installer to install Sentinel RMS License Manager.  
Please refer to "Sentinel RMS License Manager Setup & Quick Start Guide" for the details.

### Installer of Sentinel RMS License Manager

```
license_server_for_dfmstudio_v#.#.#\installer\setup.exe
```

### Sentinel RMS License Manager Setup & Quick Start Guide

```
license_server_for_dfmstudio_v#.#.#\document\LicenseServer_QuickStartGuide_en.pdf
```



- It is not necessary to install Sentinel RMS License Manager to the same computer as the computer which DFM Studio application(s) are installed to.
- When installing Sentinel RMS License Manager to a different computer, please ensure that the computer can communicate with the computer which DFM Studio application(s) are installed to.
- It is not necessary to install Sentinel RMS License Manager to all computers which DFM Studio application(s) are installed to. (Please install to one of the computers in your environment.)

## 2. With ASFALIS SmartLauncher

This chapter explains about the installation and setup of DFM Studio run via ASFALIS SmartLauncher. Please refer to [3, With ASFALIS TransServer](#) to run DFM Studio via ASFALIS TransServer.

### 2.1. Install ASFALIS SmartLauncher

1. Copy "smartlauncher\_for\_dfmstudio\_v#.#.#.zip" to a local folder (e.g., C:\temp) of a computer to install to, and extract all.
2. Run the following installer to install ASFALIS SmartLauncher.  
Please refer to "Elysium ASFALIS SmartLauncher for DFM Studio Installation Guide" for the details.

#### Installer of ASFALIS SmartLauncher

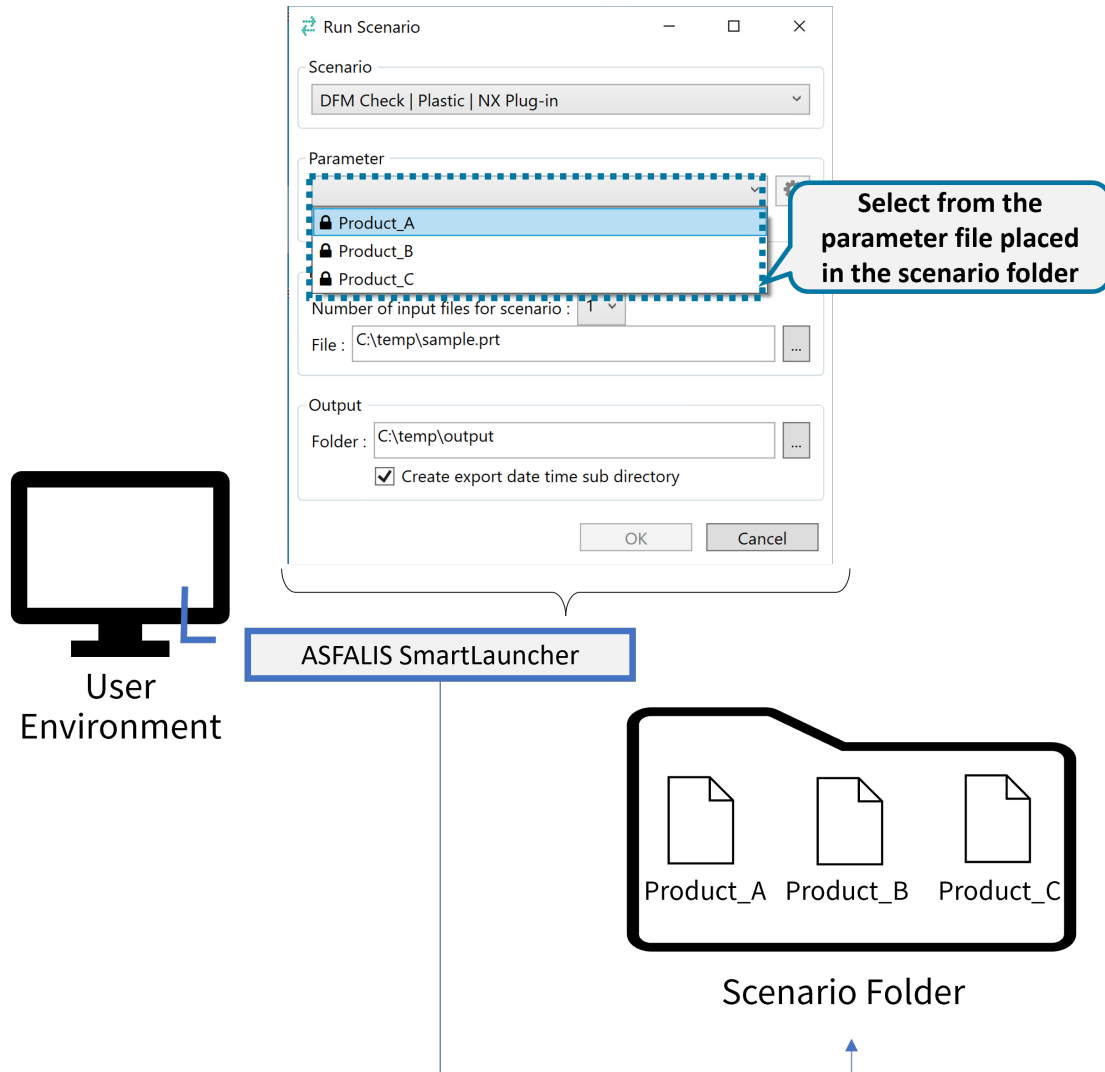
```
smartlauncher_for_dfmstudio_v#.#.#\installer\setup.exe
```

#### Elysium ASFALIS SmartLauncher for DFM Studio Installation Guide

```
smartlauncher_for_dfmstudio_v#.#.#\document\ASFALIS_SmartLauncher_for_DFM_Studio_Installation_Guide_en.pdf
```

## 2.2. Prepare & Set Parameter File

Prepare parameter file(s) in conformity to your company/organization standards, and place them under Scenario folder registered to ASFALIS SmartLauncher so that pre-defined parameter settings will become selectable in ASFALIS SmartLauncher.



- The parameter file explained here is to define the thresholds and tolerances for geometry feature recognition and manufacturability check during the check process in DFM Studio.
- Scenarios define the process details including CAD format of input models, input model category (plastic / sheet metal), and whether to export the result report.  
E.g., "DFM Check & Report | Plastic | CATIA V5 Plug-in" is to run DFM check on plastic models designed in CATIA V5, and then export the result file (\*.far) as well as the result report (\*.xlsx).

1. Copy "dfmstudio\_v#.#.#\_parameter\_settings\_tool.zip" to a local folder (e.g., C:\temp) of a computer to install to, and extract all.
2. Prepare parameter file(s) (\*.ini) in conformity to your company/organization standards using Parameter Settings Tool.  
Parameter Settings Tool and the administrator's manual are contained as follows in the extracted folder.

**DFM Studio Parameter Settings Tool - For Admin / For Plastic Model**

```
dfmstudio_v#.#.#_parameter_settings_tool\util\dfms_param_set_plastic_admin_en.xlsm
```

**DFM Studio Parameter Settings Tool - For Admin / For Sheet Metal Model**

```
dfmstudio_v#.#.#_parameter_settings_tool\util\dfms_param_set_sheet-metal_admin_en.xlsm
```

**DFM Studio Parameter Settings Tool Administrator's Manual**

```
dfmstudio_v#.#.#_parameter_settings_tool\document\DFM_Studio_Parameter_Settings_Tool_Admin_Manual_en.pdf
```

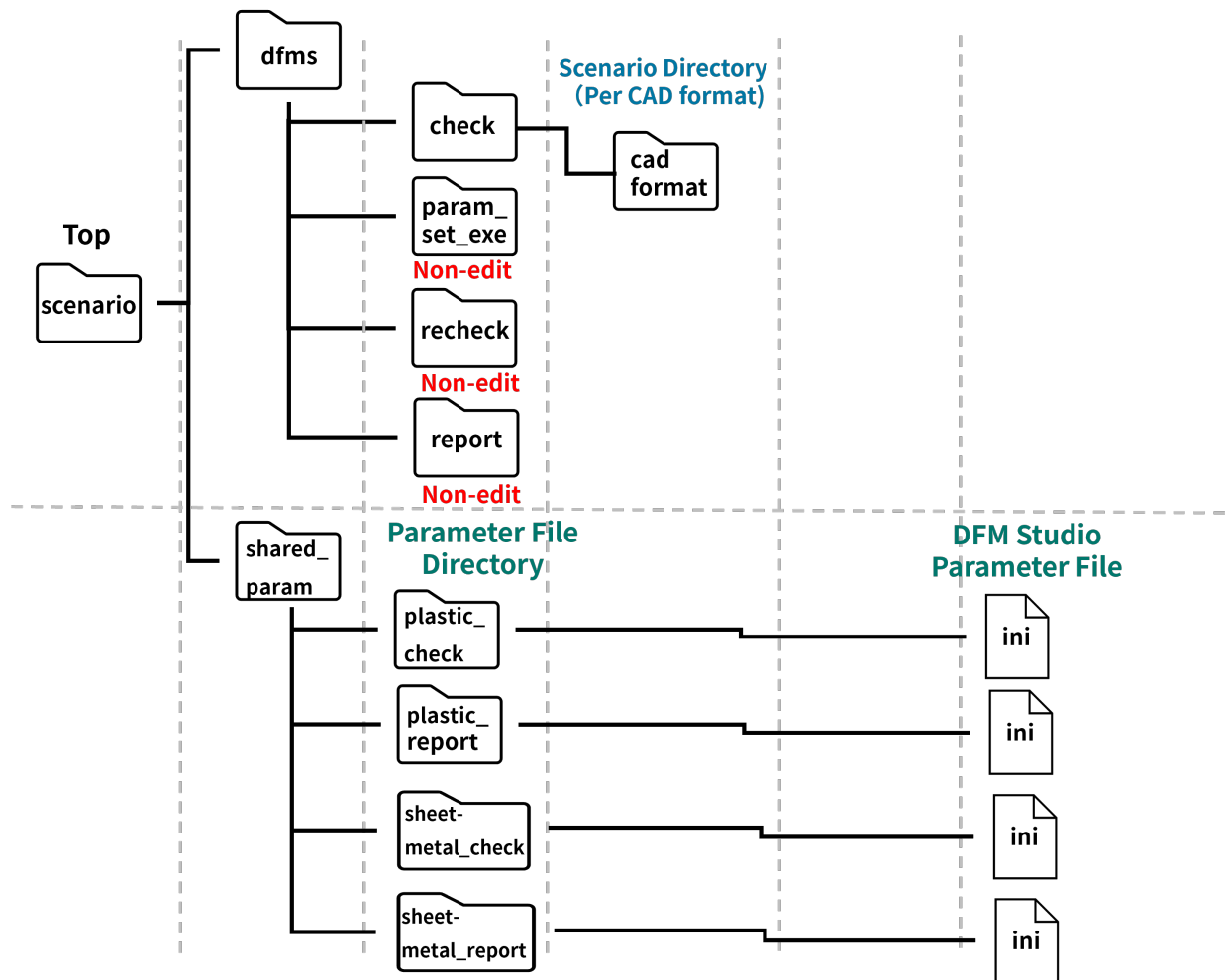
- Please refer to "DFM Studio Parameter Settings Tool Administrator's Manual" (another document) for how to prepare parameter files using Parameter Settings Tool.
3. Use the following folder as Scenario folder, or copy it to any local or shared folder.

```
dfmstudio_v#.#.#_parameter_settings_tool\scenario
```



- Please ensure that Scenario folder is located in a shared folder where related persons have Read permission to use the same parameter settings in common among multiple persons.

4. Place the prepared parameter files to Scenario folder in the following folder structure.



### "scenario" folder (Top folder)

This folder is specified as the scenario folder in ASFALIS SmartLauncher.

### "dfms" folder

- scenario\dfms\check

This folder contains Scenarios to run DFM check.

Scenarios are classified by the CAD format. Delete unnecessary CAD format(s) (scenario\dfms\check\<cad format>) if any, so that only the necessary Scenarios will be selectable from ASFALIS SmartLauncher.

- scenario\dfms\param\_set\_exe

This folder contains the tool to edit parameter settings from the user interface of ASFALIS SmartLauncher.



Please ensure not to add, remove, and/or modify the content of this folder.

- scenario\dfms\recheck

This folder contains Scenarios to re-run DFM check.  
Scenarios are common for all CAD formats.



Please ensure not to add, remove, and/or modify the content of this folder.

- scenario\dfms\report

This folder contains Scenarios to export the result reports (\*.xlsx).



Please ensure not to add, remove, and/or modify the content of this folder.

### "shared\_param" folder

- scenario\shared\_param\plastic\_check

scenario\shared\_param\plastic\_report

scenario\shared\_param\sheet-metal\_check

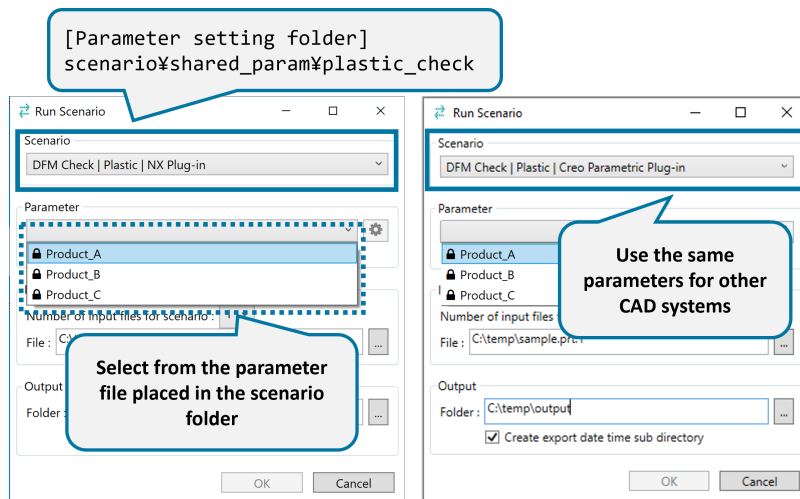
scenario\shared\_param\sheet-metal\_report

These folders contain parameter files for the corresponding Scenario type respectively.

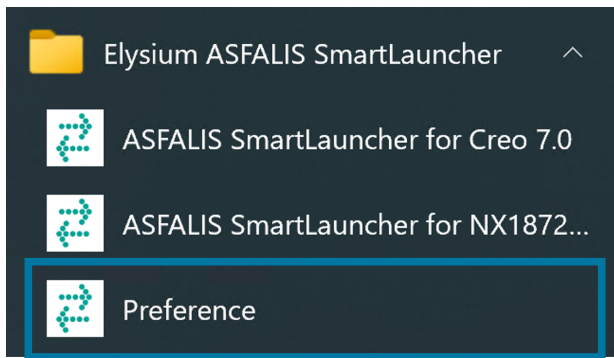
Parameter files of the default parameter settings are provided in the standard package of DFM Studio.



- Add prepared parameter files to appropriate folders so that they will become selectable in ASFALIS SmartLauncher.
- Parameter files are common for all CAD formats.



5. Select [Elysium ASFALIS SmartLauncher] > [Preference] from Windows Start Menu.

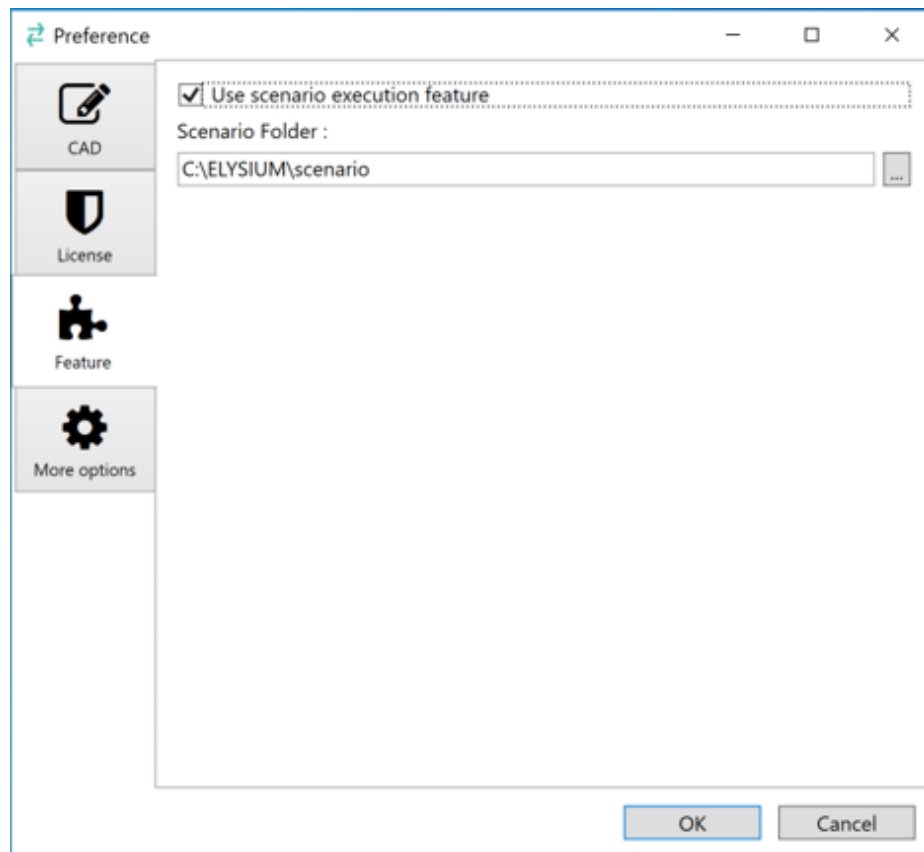


Click

6. Select [Feature] tab in the dialog.
7. Specify Scenario folder prepared above to "Scenario Folder" field by its absolute path, and then click [OK].  
E.g.)

\\share-server\scenario



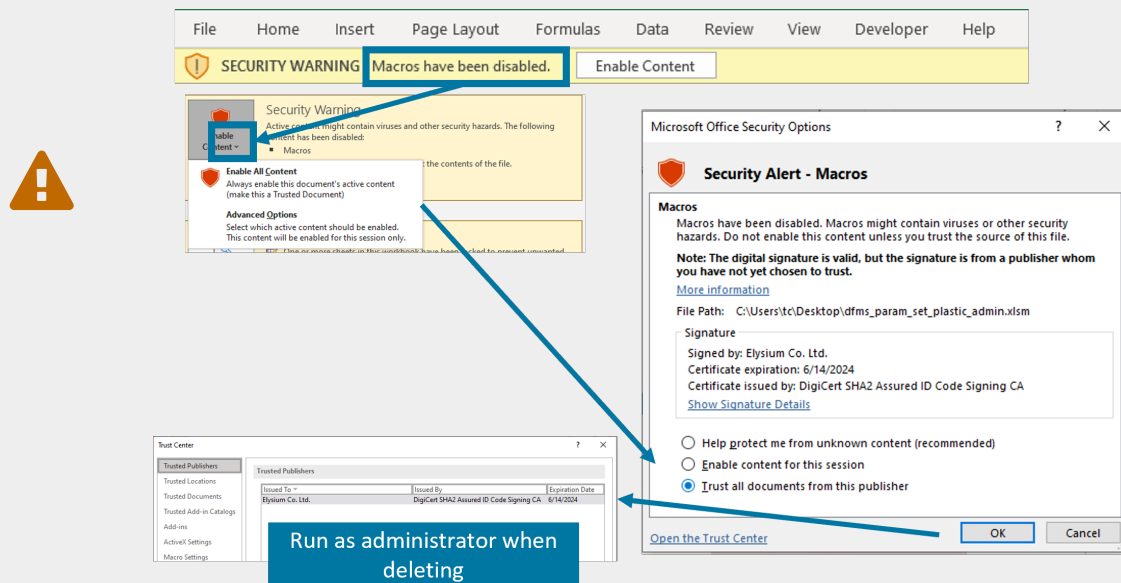


Pre-defined parameter settings saved under Scenario folder will become selectable in ASFALIS SmartLauncher.

## 2.2.1. Parameter Settings Tool

The authentication using the digital certificate will be required to enable macros for Parameter Settings Tool (For Admin / For User) in case a security warning message appears.

Please refer to the image below, and contact to your system administrator accordingly.



## 2.3. Install DFM Studio Inspector

1. Copy "dfmstudio\_v#.#.#\_inspector.zip" to a local folder (e.g., C:\temp) of a computer to install to, and extract all.
2. Run the following installer to install DFM Studio Inspector.

### Installer of DFM Studio Inspector

```
dfmstudio_v#.#.#_inspector\installer\setup.exe
```



Please ensure to run the installer as administrator.

### 2.3.1. Run DFM Studio Inspector

It requires Modify permission to the following to run DFM Studio Inspector.

- %TMP% / %TEMP%
- %APPDATA%
- DFM Studio check result file (\*.far) output folder

### 2.3.2. System Requirements

Machine / CPU	Machine and CPU capable of running OS listed below
OS	Windows 10 Pro 64-bit (*1)
Memory	4GB or more (8GB or more is recommended)
Storage	Min. 500MB free space
Graphic	- Display capable of min. 1280 x 1024 - Graphic card that supports OpenGL and double buffering (*2)

(\*1): Windows is a registered trademark of Microsoft Corp.

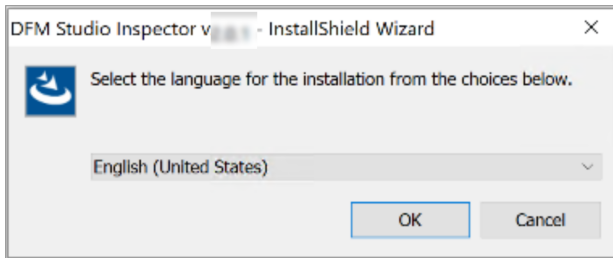
(\*2): OpenGL is a registered trademark of Hewlett Packard Enterprise.

### 2.3.3. Install DFM Studio Inspector

1. Run the following installer to install DFM Studio Inspector.

```
dfmstudio_v#.#.#_inspector\installer\setup.exe
```

2. Select the language for the installation.



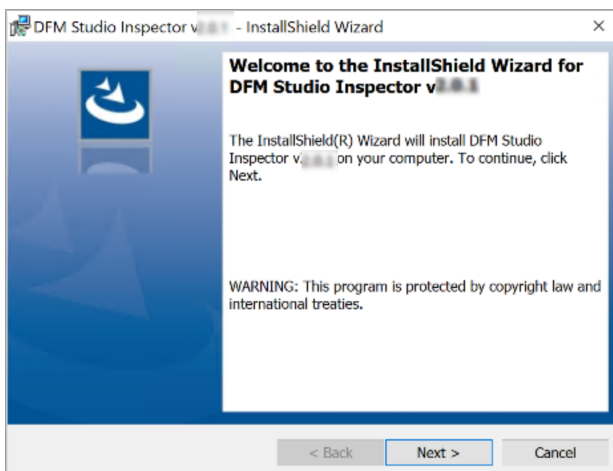
- Select "English", and then click [OK].

3. Install prerequisite(s) to the installation of DFM Studio Inspector.

- Click [Install] to install Runtime when this page appears.

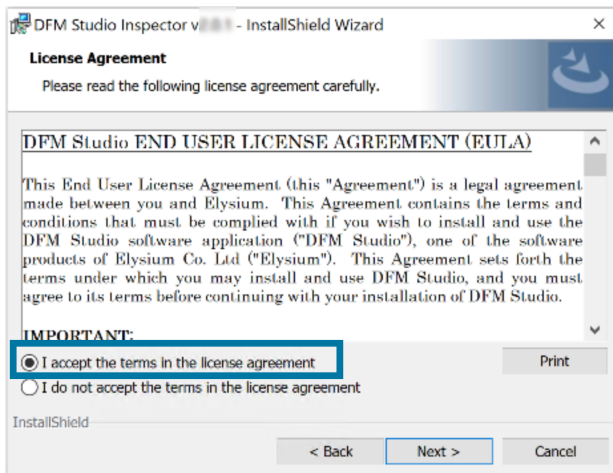
This page will be skipped when prerequisites are already installed.

4. Set up DFM Studio Inspector.



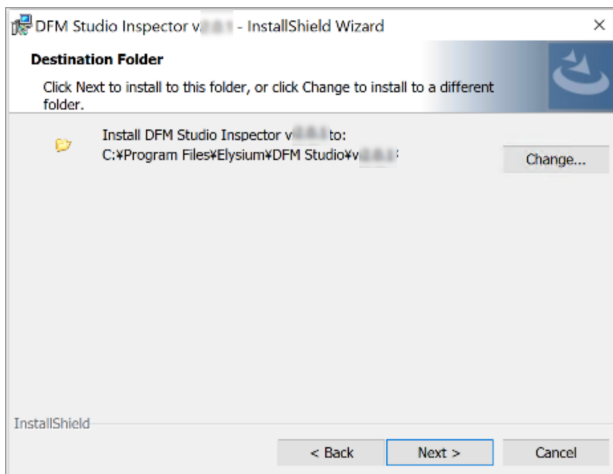
- Click [Next].

5. Agree to the license agreement.



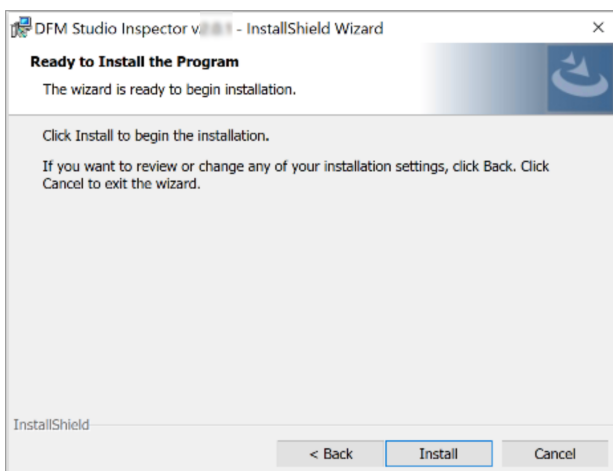
- Read the license agreement, select "I accept the terms in the license agreement" option, and then click [Next].

6. Specify the installation folder.

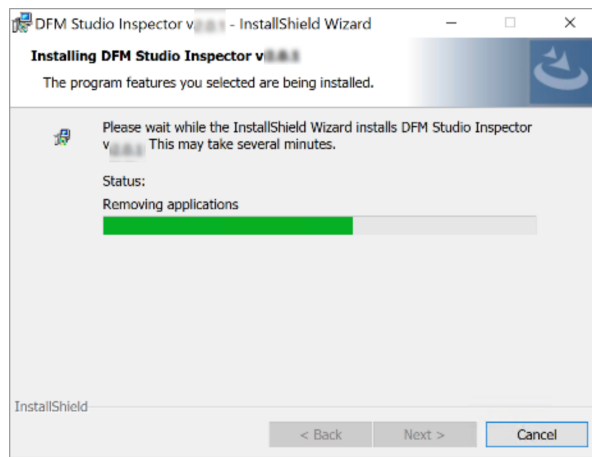


- Specify the folder to install DFM Studio Inspector to, and then click [Next].

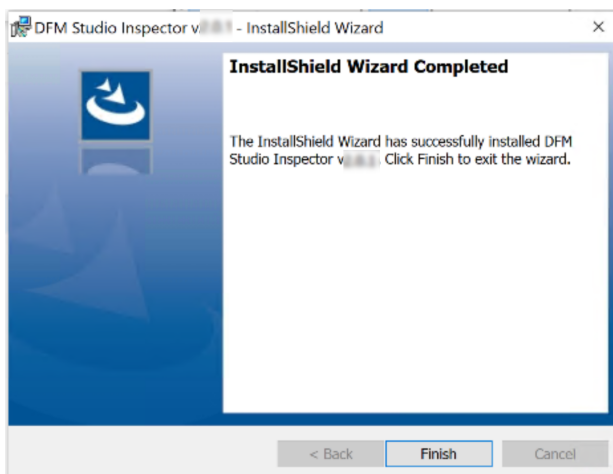
7. Confirm to start the installation.



- Click [Install] to start the installation of DFM Studio Inspector.  
This page shows the progress of the installation.



8. Confirm the completion of the installation.



- Click [Finish] to exit the wizard.

## 2.3.4. Silent-install DFM Studio Inspector

Silent-installation is a feature to install applications with no interactions on the graphical user interface. This is useful to install the same application to multiple computers.

### Silent-installation

Run a command from the command line interface to install / upgrade DFM Studio Inspector. Please refer to the sample command below, and a list of available command line arguments. E.g.)

```
D:\share\installer\setup.exe /s  
/v"/l* ""C:\temp\install.log"" INSTALLDIR=""C:\Program Files\Elysium\DFM  
Studio\v"" /qn"
```

### Silent-uninstallation

Run a command from the command line interface to uninstall DFM Studio Inspector. Please refer to the sample command below, and a list of available command line arguments. E.g.)

```
D:\share\installer\setup.exe /s /x /v"/l* ""C:\temp\uninstall.log"" /qn"
```



- Please ensure to use the installer of the same version as the currently-installed DFM Studio Inspector.

## Command Line Arguments

The following table shows the list of available command line arguments for the installer ("setup.exe") in the silent-installation / silent-uninstallation.

Argument	Description
/s	Set to run the installer in silent mode. (Common for installation and uninstallation)
/x	Set to uninstall the application. The application will be installed / upgraded when this is omitted.
/v	<p>Set to pass following arguments to Msiexec. Set as /v"&lt;argument 1&gt; &lt;argument 2&gt; ...".</p> <ul style="list-style-type: none"> <li>• /qn: Set not to show the dialog during the installation.</li> <li>• /qn+: Set to show the completion notice upon the completion of the installation.</li> <li>• /l* "\"&lt;File path to log file&gt;\"": Set to output the installation log. Specify the log file by its absolute file path. Please ensure to insert a half-width space between this argument and the file path.</li> <li>• INSTALLDIR=\"&lt;Installation folder&gt;\"": Set to specify the folder to install DFM Studio Inspector to by its absolute folder path. This is mandatory in installation.</li> </ul>



## 2.4. Install 3DxSUITE Viewer (Model Viewer)

1. Copy "modelviewer\_for\_dfmstudio\_v#.#.#.zip" to a local folder (e.g., C:\temp) of a computer to install to, and extract all.
2. Run the following installer to install Elysium 3DxSUITE Viewer (3DxSUITE Viewer).

### Installer of ASFALIS Model Viewer

```
modelviewer_for_dfmstudio_v#.#.#\installers\Elysium_3DxSUITE_EX*.*_Viewer.exe
```



You need Administrator privileges to install Elysium products.

### 2.4.1. System Requirements

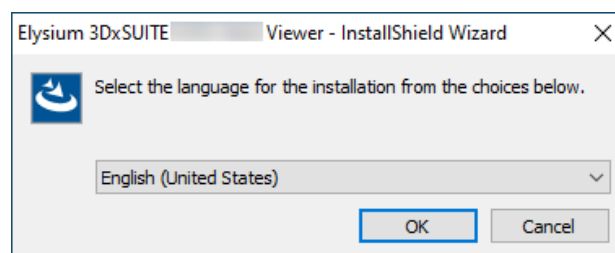
CPU	Microsoft Windows 8.1 Pro 64-bit, Windows 10 Pro 64-bit (1909 - 21H1) (*1) capable CPU
Memory	2GB or more (4G or more is recommended.)
OS	Windows 8.1 Pro 64-bit, Windows 10 Pro 64-bit (1909 - 21H1) (*1)
Supported Language	Japanese, English, Simplified Chinese
Display	Display capable of minimum 1280 x 1024 Graphics Board: OpenGL Board that supports double buffering. (*2)

(\*1): Windows is a registered trademark of Microsoft Corp.

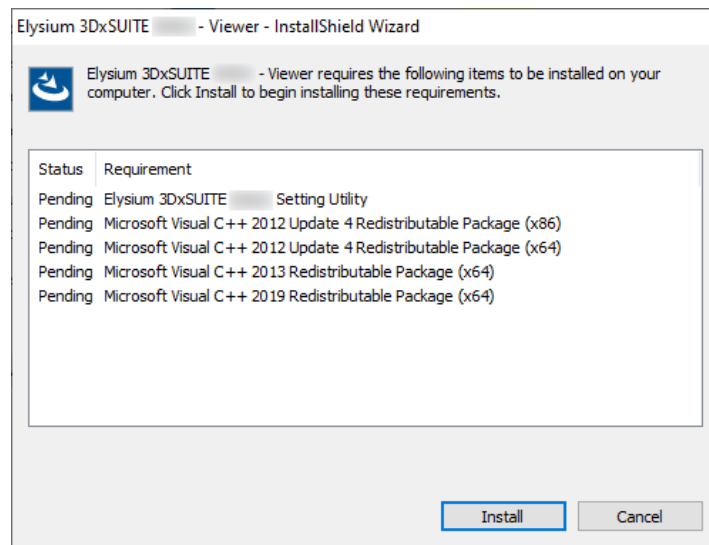
(\*2): OpenGL is a registered trademark of Hewlett Packard Enterprise.

### 2.4.2. Manual Installation

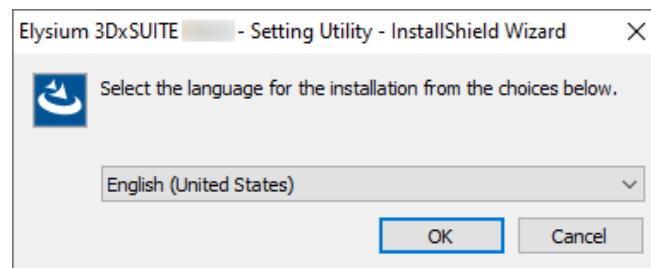
1. Run the installer for 3DxSUITE Viewer.
  - Installer: Elysium\_3DxSUITE\_EX\*.\*\_Viewer.exe  
(EX\*.\* is a version of 3DxSUITE)
2. Select the language for the installation and click [OK].



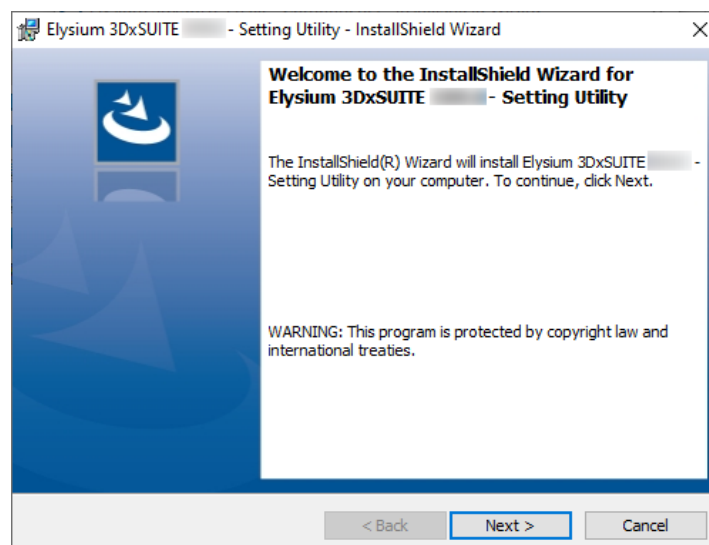
3. If the dialog below is displayed, click [Install] to start the installation.
  - If these installers are already installed, this dialog will not appear.



4. If 3DxSUITE Setting Utility is not installed, the 3DxSUITE Setting Utility installer will start. Follow the steps below to perform the installation. If 3DxSUITE Setting Utility is already installed, skip to the step after installing 3DxSUITE Setting Utility.
  - a. Select which language to use when installing, and click [OK].



- b. Installation Wizard starts. Click [Next].

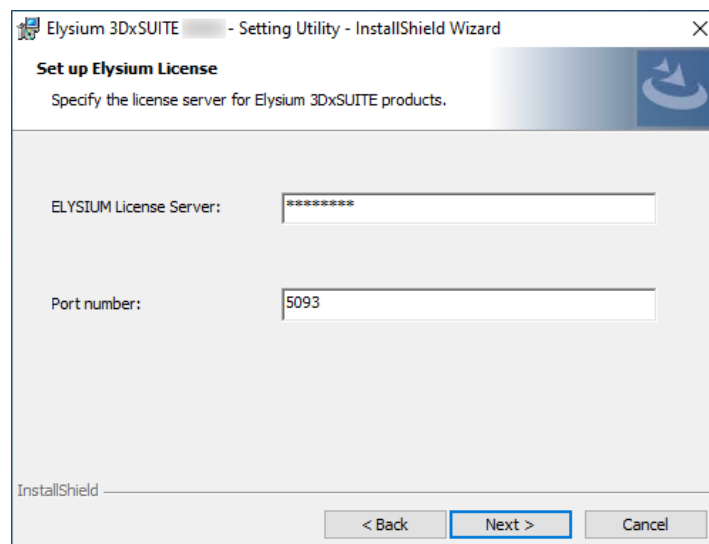


- c. Select "I accept the terms in the license agreement" if you accept the license agreement

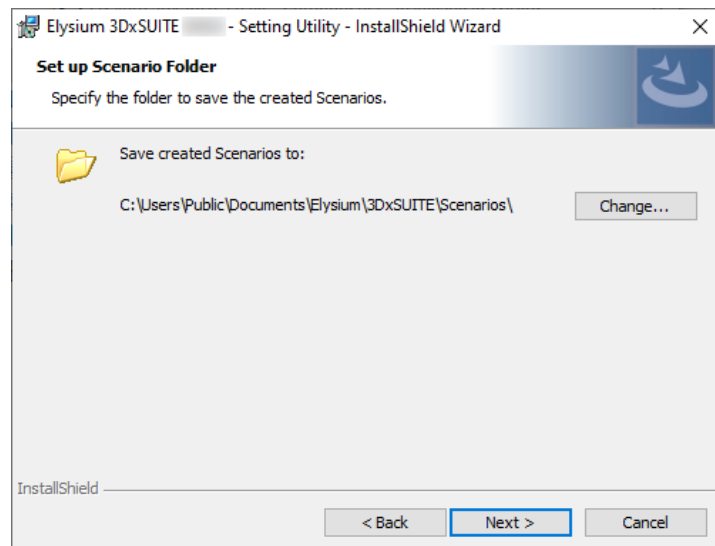
and click [Next]. If you don't accept, you cannot continue the installation.



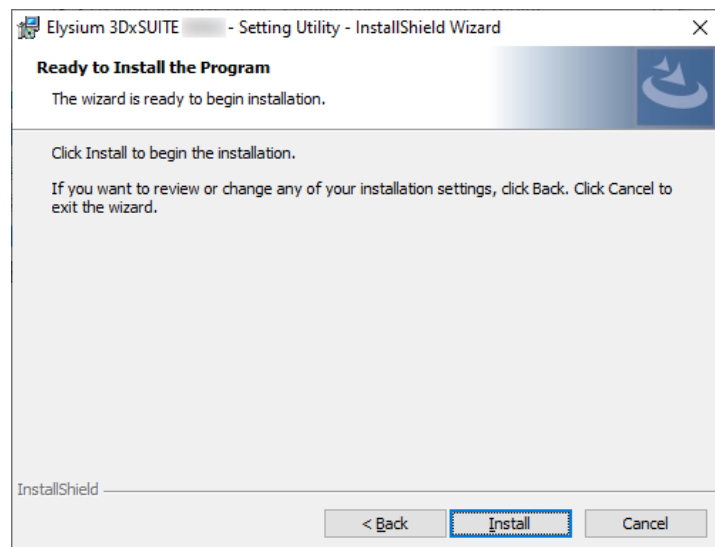
- d. "License Client Setting" dialog will appear. Enter the hostname of the computer where you installed Sentinel RMS License Manager, and if necessary, change the port number. And then click [Next].



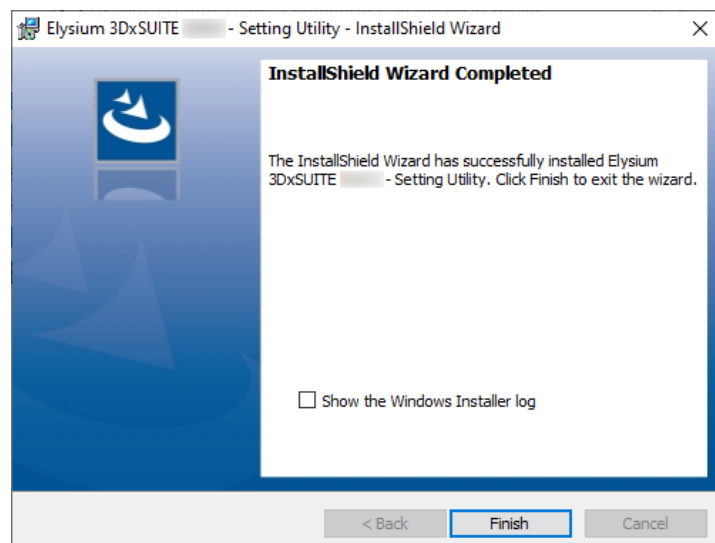
- e. "Set up Scenario Folder" dialog will appear. Change the folder path if necessary, and then click [Next].



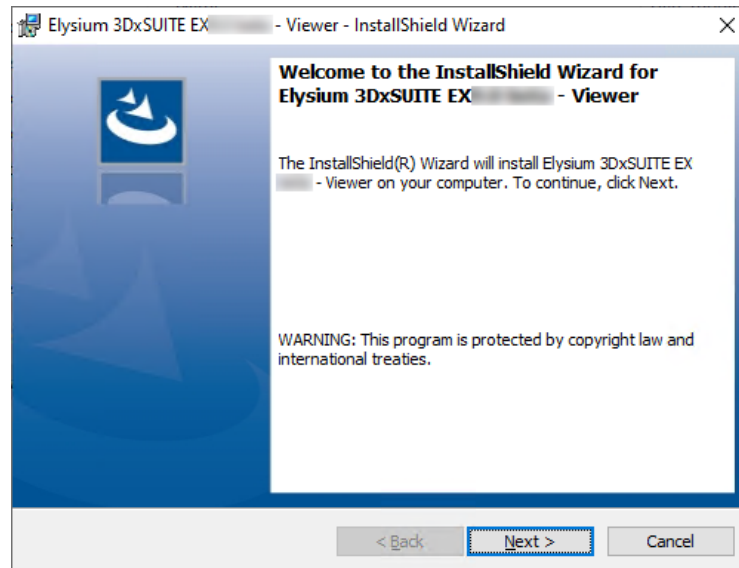
f. Click [Install] to start the installation.



g. When the installation of 3DxSUITE Setting Utility is completed, the following dialog will appear. Click [Finish] to end the installer.



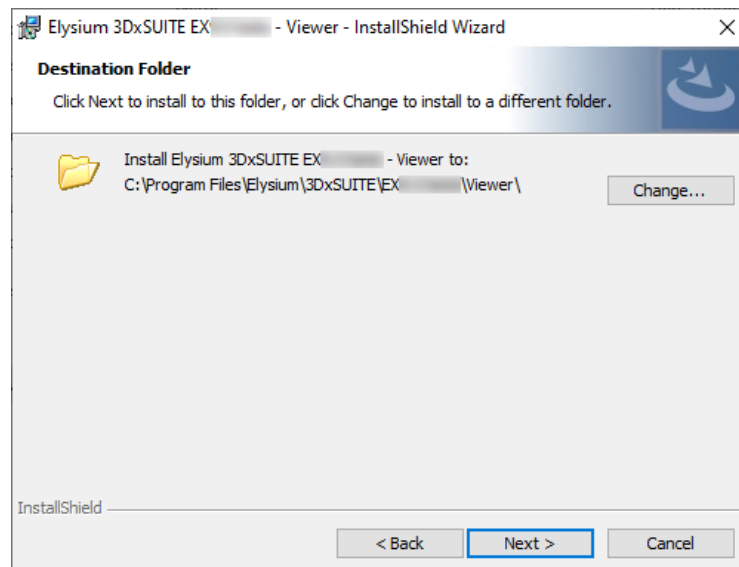
5. Viewer Install Wizard will appear. Click [Next].



6. After reading through carefully, select "I accept the terms in the license agreement" if you agree, then click [Next].

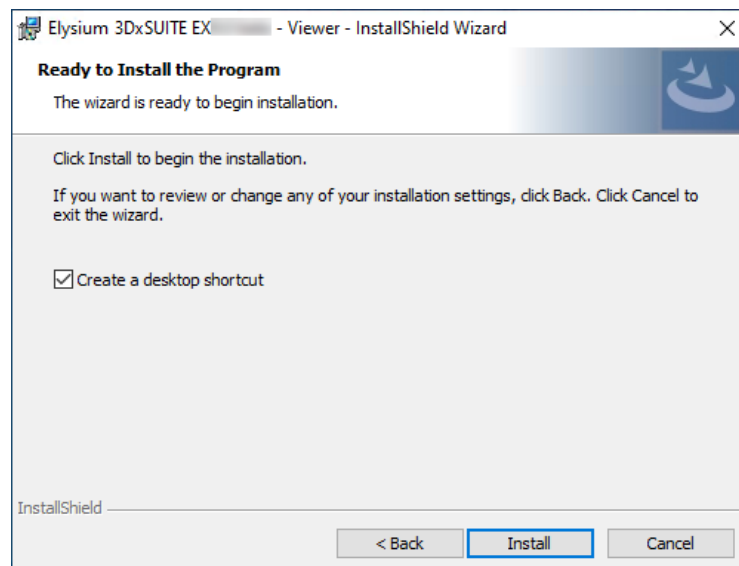


7. The dialog to specify a destination folder will appear. To change the destination folder from default setting, click [Change] and specify the new destination folder. When the setting is finished, click [Next].

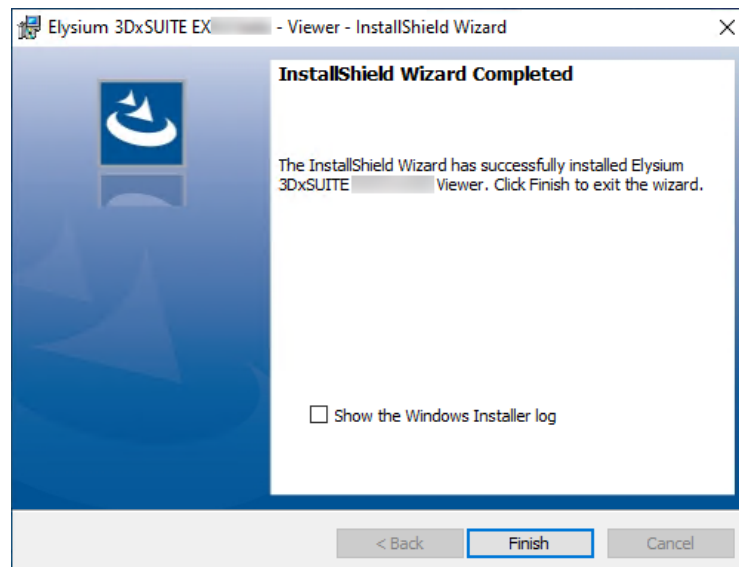


Please ensure that the destination folder path consists of ASCII characters only. If the folder path contains non-ASCII characters, the application may not work as expected.

- The following dialog will appear. Disable "Create a desktop shortcut" if you do not want to create a desktop shortcut. Click [Install] to start the installation.



- When the installation is finished, the following dialog will appear. Click [Finish].



### 2.4.3. Silent Installation

By using the command, you can install or upgrade 3DxSUITE Viewer without GUI operations.

- Example of command

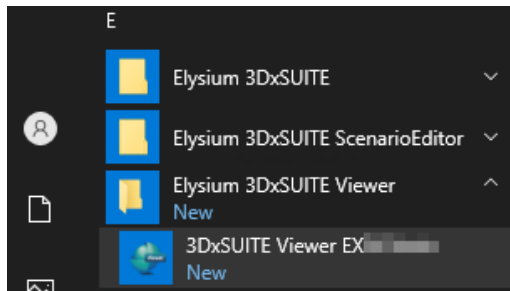
```
Elysium_3DxSUITE_EX9.0_Viewer.exe /s /v"/l* "C:\temp\install.log\"
INSTALLDIR="C:\Program Files\Elysium\3DxSUITE\EX9.0\Viewer\" /qn"
```

This is a list of command arguments to pass to the installer when executing silent installation.

Command Argument	Description	Mandatory / Optional
/s	Execute installation or uninstallation in silent mode.	Mandatory
/v	<p>Specify the following arguments in the form of /v"arg1 arg2 ...":</p> <ul style="list-style-type: none"> <li>• /l* "&lt;Log file&gt;" : Specify the log file path. A space is required between "/l*" and the filename.</li> <li>• INSTALLDIR="&lt;Installation Folder&gt;" : Specify the folder where you want to install. This can be specified only when installing.</li> <li>• /qn : Install or uninstall without displaying the dialog.</li> <li>• /qn+ : Dialog is displayed when installation or uninstallation is completed.</li> </ul>	Optional

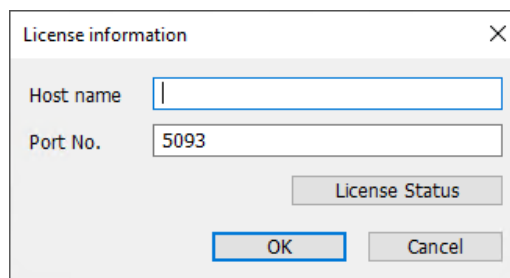
## 2.4.4. Launch

In Windows start menu, select [Elysium 3DxSUITE Viewer] > [3DxSUITE Viewer EX\*.\*) to launch 3DxSUITE Viewer. (\*.\*) is the version of 3DxSUITE Viewer.)



## Setting License

After the installation, the license settings dialog may appear the first time you start 3DxSUITE Viewer. This dialog will not appear the next time you start. Also, this dialog can be opened by selecting [Help] > [License] after starting 3DxSUITE Viewer.



Confirm the status of license usage from "License Status."



- If you change the initial value in "License Information" dialog and click [OK], the license information will be saved as the setting common for all users using 3DxSUITE Viewer. So even if you change the license settings from 3DxSUITE Setting later on, the license information in 3DxSUITE Viewer will not change.
- If you change the initial value in "License Information" dialog but not clicking [OK] at all, the license will be obtained by referring to the settings in 3DxSUITE Setting. In that case, if the license settings in 3DxSUITE Setting are changed, the license information in 3DxSUITE Viewer will also change.

## 2.4.5. Exit

Select [File] > [Exit] from the menu or close the window to exit.

## 2.4.6. Uninstallation



## Manual Uninstallation

1. From Windows start menu, select [Start] > [Settings](Gear mark).
2. Then select [Apps].
3. From the list of applications displayed in "Apps & features", select "Elysium 3DxSUITE EX\*. \* - Viewer" to uninstall. (\*. \* is the version of 3DxSUITE Viewer)

## Silent Uninstallation

Silent uninstallation can be performed by a command. Installer of the currently installed version will be required.

- Example of command

```
Elysium_3DxSUITE_EX9.0_Viewer.exe /s /x /v"/l* "C:\temp\uninstall.log\" /qn"
```

This is a list of command arguments to pass to the installer when executing silent uninstallation.

Command Argument	Description	Mandatory / Optional
/s	Execute installation or uninstallation in silent mode.	Mandatory
/x	Execute uninstallation.	Mandatory
/v	Specify the following arguments in the form of /v"arg1 arg2 ...": <ul style="list-style-type: none"> <li>• /l* "&lt;Log file&gt;" : Specify the log file path. A space is required between "/ l *" and the filename.</li> <li>• /qn : Install or uninstall without displaying the dialog.</li> <li>• /qn+ : Dialog is displayed when installation or uninstallation is completed.</li> </ul>	Optional

## 3. With ASFALIS TransServer

This chapter explains about the installation and setup of DFM Studio run via ASFALIS TransServer. Please refer to [2, With ASFALIS SmartLauncher](#) to run DFM Studio via ASFALIS SmartLauncher.

### 3.1. Install ASFALIS Slave Node

#### 3.1.1. Fresh Installation of ASFALIS Slave Node

Install Slave Node to the computer to run DFM Studio, and set it up as Slave Node for ASFALIS TransServer to run DFM Studio via ASFALIS TransServer.

1. Copy "slavenode\_for\_dfmstudio\_v#.#.#.zip" to a local folder (e.g., C:\temp) of a computer to install to, and extract all.
2. Run the following installer to install ASFALIS Slave Node.  
Please refer to "ASFALIS Slave Node Installation Guide" for the details.

##### Installer of ASFALIS Slave Node

```
slavenode_for_dfmstudio_v#.#.#\installer\setup.exe
```

##### ASFALIS Slave Node Installation Guide

```
slavenode_for_dfmstudio_v#.#.#\document\SlaveNode_InstallationGuide_en.pdf
```

3. Add DFM Studio as follows.
  - a. Apply "DFM Studio module" patch.
    - Replace the following folders:

```
<ASFALIS Slave Node installation folder>\module\CADfeature
```

```
<ASFALIS Slave Node installation folder>\module\tools
```

by the following DFM Studio module patch:

```
slavenode_for_dfmstudio_v#.#.#\slavenode_patch\component_64bit\bin\CADfeature
```

```
slavenode_for_dfmstudio_v#.#.#\slavenode_patch\component_64bit\bin\tools
```

- Replace the following config file:

```
<ASFALIS Slave Node installation folder>\config\AsfalisConfig_Setting.xml
```

by the following config file of Slave Node for DFM Studio:

```
slavenode_for_dfmstudio_v#.#.#\slavenode_patch\SlaveNode_64bit\config\Asfalis  
Config_Setting.xml
```

- b. Confirm that DFM Studio modules listed below exist in the following folder.

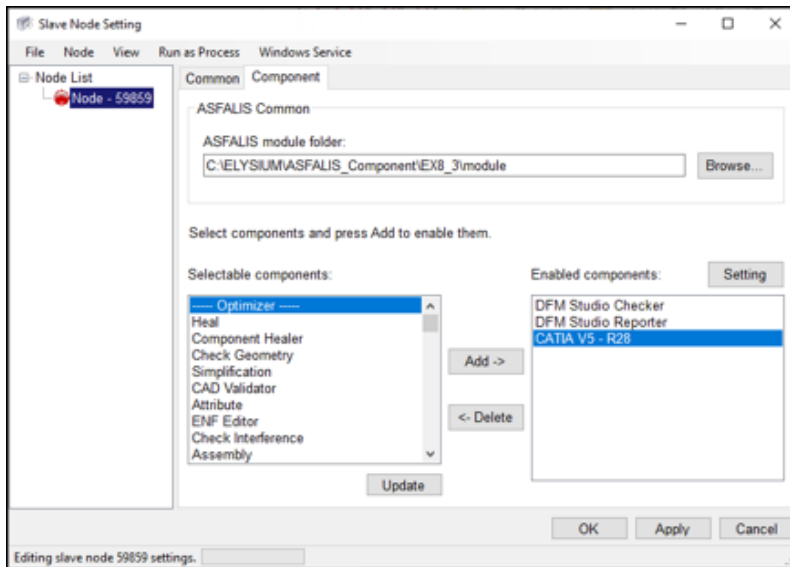
```
<ASFALIS Slave Node installation folder>\module\tools\win
```

- "dfmstudio" folder
  - dscheck.cmd
  - dsreport.cmd
- c. Select [Windows Start Menu] > [Elysium ASFALIS Component] > [EX#.#] > [setup node], and add following Components in the dialog.

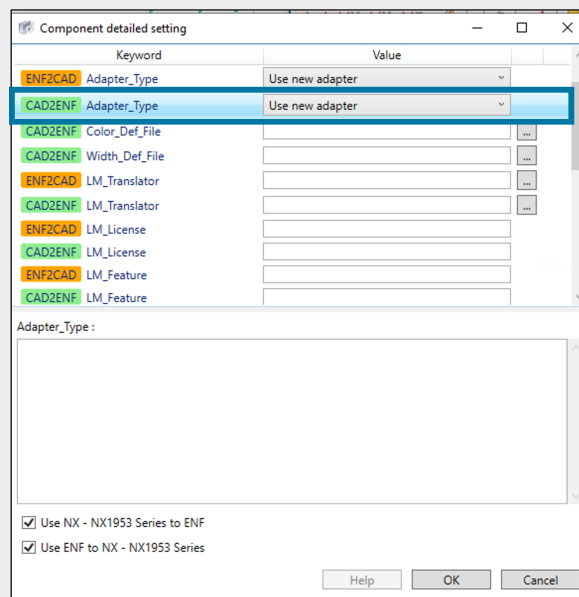
E.g.)

- "CATIAV5 – R28" Component: To translate CATIA V5 R28 data to ENF
- "NX – NX12" Component: To translate NX12 data to ENF
- "DFM Studio Checker" Component: To run DFM check
- "DFM Studio Reporter" Component: To export DFM check result report

E.g.) Adding "CATIAV5 – R28", "DFM Studio Checker", and "DFM Studio Reporter" Components



Please ensure to select "Use new adapter" option for CAD to ENF translation when using NX or Creo Parametric.



#### 4. Start ASFALIS Slave Node.

- [Start] / [Start All]
  - Please refer to ASFALIS Slave Node Installation Guide (SlaveNode\_InstallationGuide\_en.pdf) for the details about how to start/stop ASFALIS Slave Nodes, add Components, etc.

### 3.1.2. DFM Studio Version-up Steps for DFM Studio Module



- If you are using DFM Studio via ASFALIS TransServer with an existing version, refer to the steps below for version-up steps.
  1. Apply "DFM Studio module" patch to Slave Node. Replace <ASFALIS Slave Node installation folder>\module\tools\dfmstudio folder to the dfmstudio folder in slavenode\_for\_dfmstudio\_v#.#.#\slavenode\_patch\component\_64bit\bin\tools\win\.
  2. Disable the currently used DFM Studio Scenarios from [Administration] > [Scenario Administration].
  3. Import the new version scenario (\*.zip) from [Scenario Administration].
    - Newly installing ASFALIS TransServer is not required.

## 3.2. Install ASFALIS TransServer

### 3.2.1. Fresh Installation of ASFALIS TransServer

This section explains how to install ASFALIS TransServer for the first time.

1. Copy "transserver\_for\_dfmstudio\_v#.#.#.zip" to a local folder (e.g., C:\temp) of a computer to install to, and extract all.
2. Run the following installer to install ASFALIS TransServer.  
Please refer to "ASFALIS TransServer Installation Guide" for the details.

#### Installer of ASFALIS TransServer

```
transserver_for_dfmstudio_v#.#.#\installer\setup.exe
```

#### [ASFALIS TransServer Installation Guide]

```
transserver_for_dfmstudio_v#.#.#\document\TransServerInstallationGuide_en.pdf
```

### 3.3. Set up ASFALIS TransServer

1. Launch ASFALIS TransServer.
  - Please refer to "ASFALIS TransServer Installation Guide" (TransServerInstallationGuide\_en.pdf) > "3. Boot Procedure" for how to launch ASFALIS TransServer.
2. Log in to ASFALIS TransServer, and then register Slave Node from [Administration] > [Services Monitor].
  - a. Click [Edit] and then [Add] when other Slave Nodes are already registered.
  - b. Specify the Slave Node computer name to "Host" field and the port number for DFM Studio Components (e.g., "59859") to "Port" field, and then click [Save].
3. Enable DFM Studio Components ("dscheck" / "dsreport") from [Administration] > [Component Administration].

ASFALIS TransServer					Language: -	Administrator(admin) -
New Job - Operation - Administration -						
Component List						
<div> <span>Disable</span> <span>Enable</span> <span>Remove from Exportable</span> <span>Add to Exportable</span> <span>Import</span> <span>Export</span> </div>						
<input type="checkbox"/> Internal Name	Type	Name	Description	Exportable		
<input checked="" type="checkbox"/> dscheck	canvas	DFM Studio Checker	DFM Studio Checker	<input checked="" type="checkbox"/>		
<input checked="" type="checkbox"/> dsreport	canvas	DFM Studio Reporter	DFM Studio Reporter	<input type="checkbox"/>		

4. Import the following DFM Studio Scenarios from [Administration] > [Scenario Administration].

**transserver\_for\_dfmstudio\_v#.#.#\scenario\english\dfmstudio\_v#.#.#\_scenario\_check.zip**

This contains Scenarios to run DFM check.

**transserver\_for\_dfmstudio\_v#.#.#\scenario\english\dfmstudio\_v#.#.#\_scenario\_check\_report.zip**

This contains Scenarios to run DFM check, and then export the result report (\*.xlsx).

**transserver\_for\_dfmstudio\_v#.#.#\scenario\english\dfmstudio\_v#.#.#\_scenario\_report.zip**

This contains Scenarios to export the result report (\*.xlsx).



- Please ensure to import as the ZIP file.



- It requires a license on DFM Studio Reporter to export check result reports.

5. Confirm that following Scenarios are added to the Scenario list from [Administration] > [Scenario Administration].

ZIP file to import	Scenario name on ASFALIS TransServer
dfmstudio_v#.#.#_scenario_check.zip	DFM Check   Plastic   CATIA V5 Plug-in DFM Check   Sheet Metal   CATIA V5 Plug-in DFM Check   Plastic   NX Plug-in DFM Check   Sheet Metal   NX Plug-in DFM Check   Plastic   Creo Parametric Plug-in DFM Check   Sheet Metal   Creo Parametric Plug-in DFM Check   Plastic   SOLIDWORKS Plug-in DFM Check   Sheet Metal   SOLIDWORKS Plug-in DFM Check   Plastic   ENF DFM Check   Sheet Metal   ENF
dfmstudio_v#.#.#_scenario_check_report.zip	DFM Check & Report   Plastic   CATIA V5 Plug-in DFM Check & Report   Sheet Metal   CATIA V5 Plug-in DFM Check & Report   Plastic   NX Plug-in DFM Check & Report   Sheet Metal   NX Plug-in DFM Check & Report   Plastic   Creo Parametric Plug-in DFM Check & Report   Sheet Metal   Creo Parametric Plug-in DFM Check & Report   Plastic   SOLIDWORKS Plug-in DFM Check & Report   Sheet Metal   SOLIDWORKS Plug-in DFM Check & Report   Plastic   ENF DFM Check & Report   Sheet Metal   ENF
dfmstudio_v#.#.#_scenario_report.zip	Export Report (Include Auto-capture)   Plastic Export Report   Plastic Export Report (Include Auto-capture)   Sheet Metal Export Report   Sheet Metal

6. Delete unnecessary Scenario(s) if any, so that only the necessary Scenarios will be selectable on ASFALIS TransServer.
7. Submit Jobs of DFM Studio Component(s) ("dscheck" / "dsreport") to ASFALIS TransServer using Scenarios listed above to confirm that it works as expected. Please refer to "DFM\_Studio\_Quick\_Start\_Guide\_en.pdf" > "1.1. With ASFALIS TransServer" for how to submit Jobs to ASFALIS TransServer.



## 3.4. Install DFM Studio Inspector

1. Copy "dfmstudio\_v#.#.#\_inspector.zip" to a local folder (e.g., C:\temp) of a computer to install to, and extract all.
2. Run the following installer to install DFM Studio Inspector.

### Installer of DFM Studio Inspector

```
dfmstudio_v#.#.#_inspector\installer\setup.exe
```



Please ensure to run the installer as administrator.

### 3.4.1. Run DFM Studio Inspector

It requires Modify permission to the following to run DFM Studio Inspector.

- %TMP% / %TEMP%
- %APPDATA%
- DFM Studio check result file (\*.far) output folder

### 3.4.2. System Requirements

Machine / CPU	Machine and CPU capable of running OS listed below
OS	Windows 10 Pro 64-bit (*1)
Memory	4GB or more (8GB or more is recommended)
Storage	Min. 500MB free space
Graphic	- Display capable of min. 1280 x 1024 - Graphic card that supports OpenGL and double buffering (*2)

(\*1): Windows is a registered trademark of Microsoft Corp.

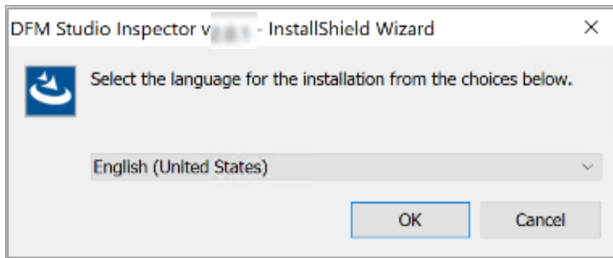
(\*2): OpenGL is a registered trademark of Hewlett Packard Enterprise.

### 3.4.3. Install DFM Studio Inspector

1. Run the following installer to install DFM Studio Inspector.

```
dfmstudio_v#.#.#_inspector\installer\setup.exe
```

2. Select the language for the installation.



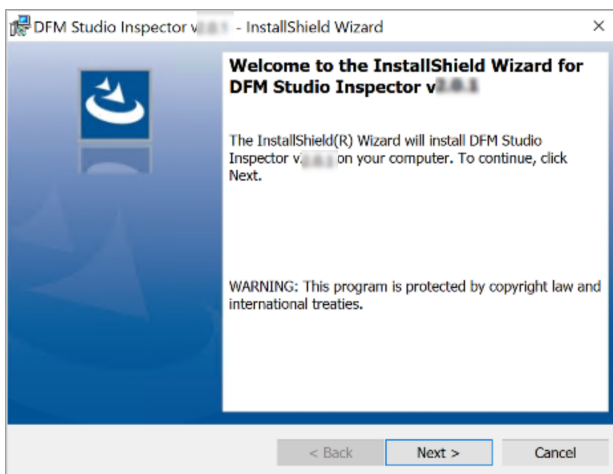
- Select "English", and then click [OK].

3. Install prerequisite(s) to the installation of DFM Studio Inspector.

- Click [Install] to install Runtime when this page appears.

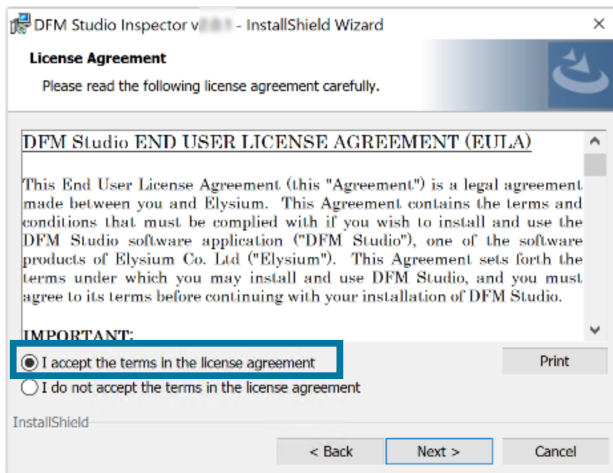
This page will be skipped when prerequisites are already installed.

4. Set up DFM Studio Inspector.



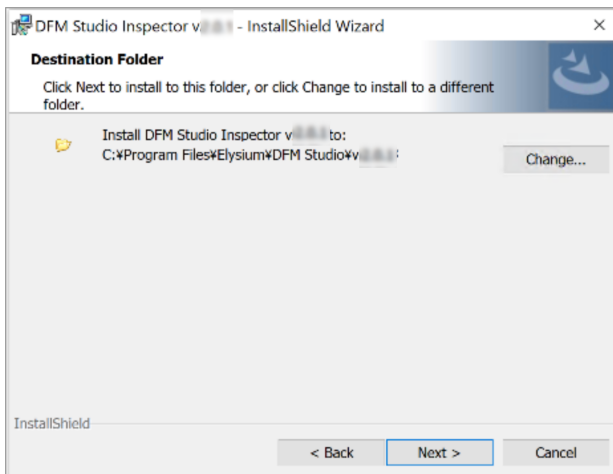
- Click [Next].

5. Agree to the license agreement.



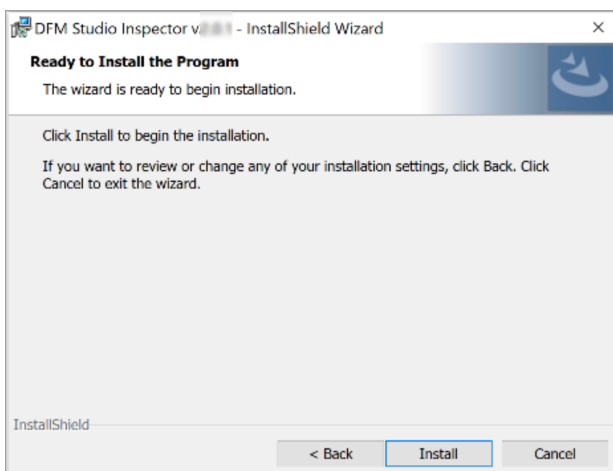
- Read the license agreement, select "I accept the terms in the license agreement" option, and then click [Next].

6. Specify the installation folder.

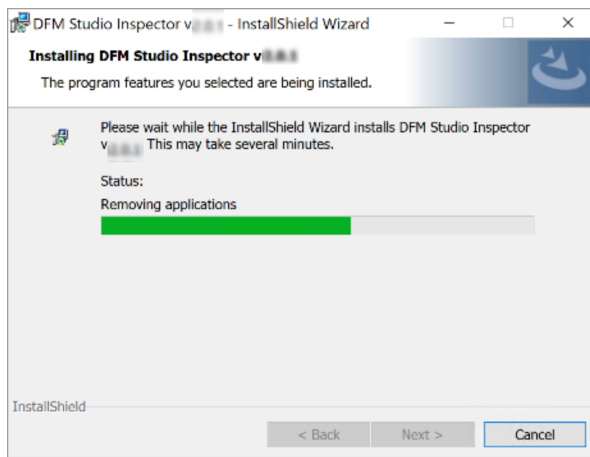


- Specify the folder to install DFM Studio Inspector to, and then click [Next].

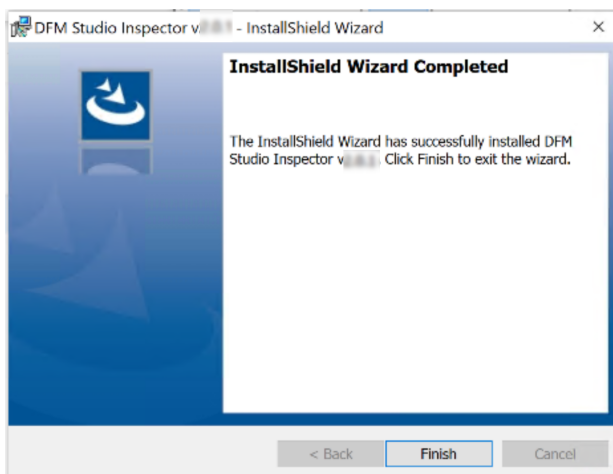
7. Confirm to start the installation.



- Click [Install] to start the installation of DFM Studio Inspector.  
This page shows the progress of the installation.



8. Confirm the completion of the installation.



- Click [Finish] to exit the wizard.

### 3.4.4. Silent-install DFM Studio Inspector

Silent-installation is a feature to install applications with no interactions on the graphical user interface. This is useful to install the same application to multiple computers.

#### Silent-installation

Run a command from the command line interface to install / upgrade DFM Studio Inspector. Please refer to the sample command below, and a list of available command line arguments. E.g.)

```
D:\share\installer\setup.exe /s  
/v"/l* ""C:\temp\install.log"" INSTALLDIR=""C:\Program Files\Elysium\DFM  
Studio\v"" /qn"
```

#### Silent-uninstallation

Run a command from the command line interface to uninstall DFM Studio Inspector. Please refer to the sample command below, and a list of available command line arguments. E.g.)

```
D:\share\installer\setup.exe /s /x /v"/l* ""C:\temp\uninstall.log"" /qn"
```



- Please ensure to use the installer of the same version as the currently-installed DFM Studio Inspector.

## Command Line Arguments

The following table shows the list of available command line arguments for the installer ("setup.exe") in the silent-installation / silent-uninstallation.

Argument	Description
/s	Set to run the installer in silent mode. (Common for installation and uninstallation)
/x	Set to uninstall the application. The application will be installed / upgraded when this is omitted.
/v	Set to pass following arguments to Msiexec. Set as /v"<argument 1> <argument 2> ...". <ul style="list-style-type: none"><li>• /qn: Set not to show the dialog during the installation.</li><li>• /qn+: Set to show the completion notice upon the completion of the installation.</li><li>• /l* "\"&lt;File path to log file&gt;\"": Set to output the installation log. Specify the log file by its absolute file path. Please ensure to insert a half-width space between this argument and the file path.</li><li>• INSTALLDIR=\"&lt;Installation folder&gt;\"": Set to specify the folder to install DFM Studio Inspector to by its absolute folder path. This is mandatory in installation.</li></ul>

## 3.5. Install 3DxSUITE Viewer (Model Viewer)

1. Copy "modelviewer\_for\_dfmstudio\_v#.#.#.zip" to a local folder (e.g., C:\temp) of a computer to install to, and extract all.
2. Run the following installer to install Elysium 3DxSUITE Viewer (3DxSUITE Viewer).

### Installer of ASFALIS Model Viewer

modelviewer\_for\_dfmstudio\_v#.#.#\installers\Elysium\_3DxSUITE\_EX\*.\*\_Viewer.exe



You need Administrator privileges to install Elysium products.

### 3.5.1. System Requirements

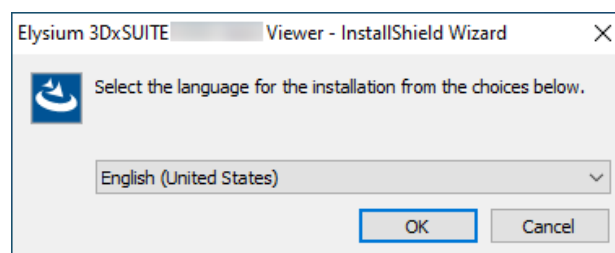
CPU	Microsoft Windows 8.1 Pro 64-bit, Windows 10 Pro 64-bit (1909 - 21H1) (*1) capable CPU
Memory	2GB or more (4G or more is recommended.)
OS	Windows 8.1 Pro 64-bit, Windows 10 Pro 64-bit (1909 - 21H1) (*1)
Supported Language	Japanese, English, Simplified Chinese
Display	Display capable of minimum 1280 x 1024 Graphics Board: OpenGL Board that supports double buffering. (*2)

(\*1): Windows is a registered trademark of Microsoft Corp.

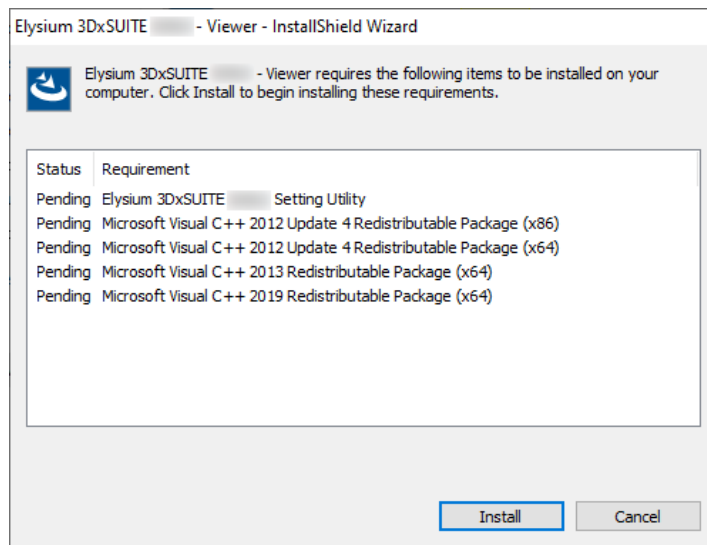
(\*2): OpenGL is a registered trademark of Hewlett Packard Enterprise.

### 3.5.2. Manual Installation

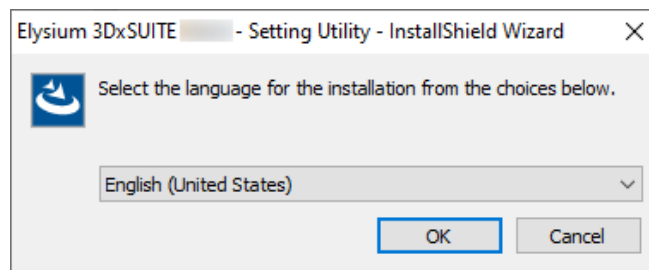
1. Run the installer for 3DxSUITE Viewer.
  - Installer: Elysium\_3DxSUITE\_EX\*.\*\_Viewer.exe  
(EX\*.\* is a version of 3DxSUITE)
2. Select the language for the installation and click [OK].



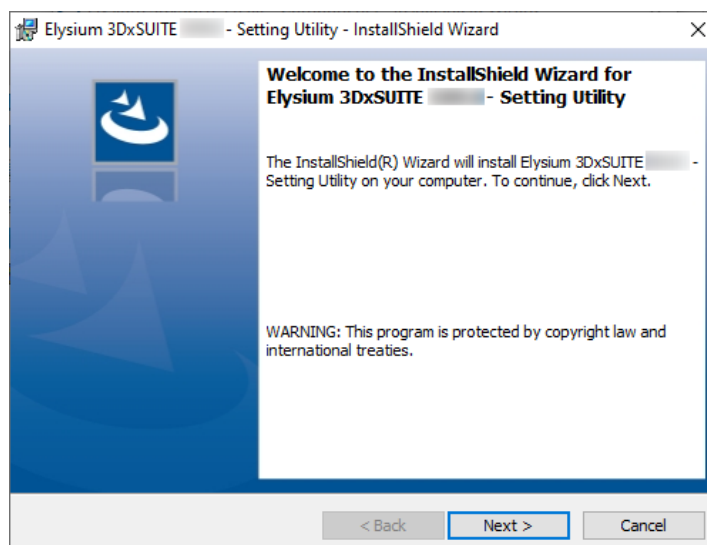
3. If the dialog below is displayed, click [Install] to start the installation.
  - If these installers are already installed, this dialog will not appear.



4. If 3DxSUITE Setting Utility is not installed, the 3DxSUITE Setting Utility installer will start. Follow the steps below to perform the installation. If 3DxSUITE Setting Utility is already installed, skip to the step after installing 3DxSUITE Setting Utility.
  - a. Select which language to use when installing, and click [OK].



- b. Installation Wizard starts. Click [Next].



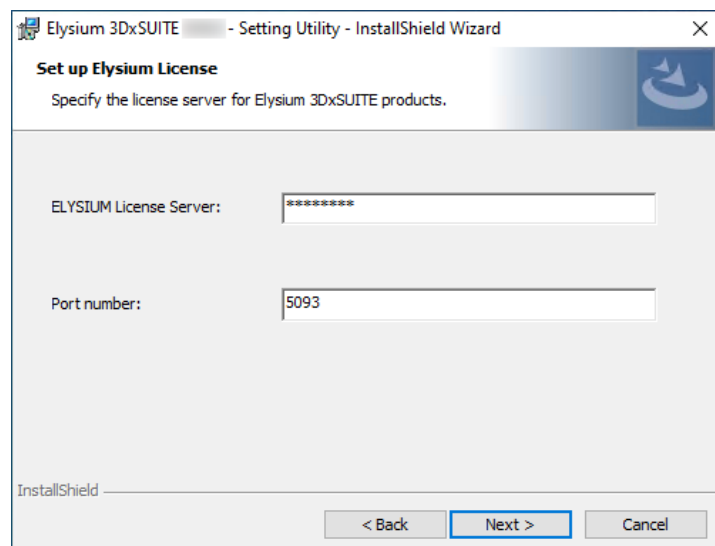
- c. Select "I accept the terms in the license agreement" if you accept the license agreement



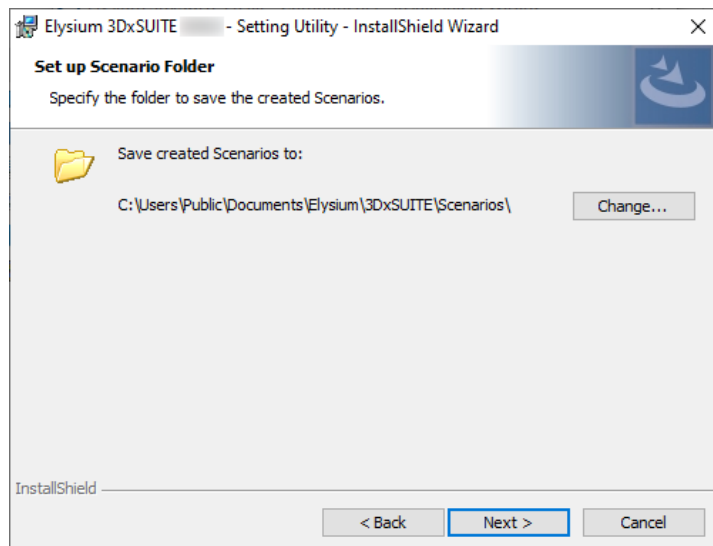
and click [Next]. If you don't accept, you cannot continue the installation.



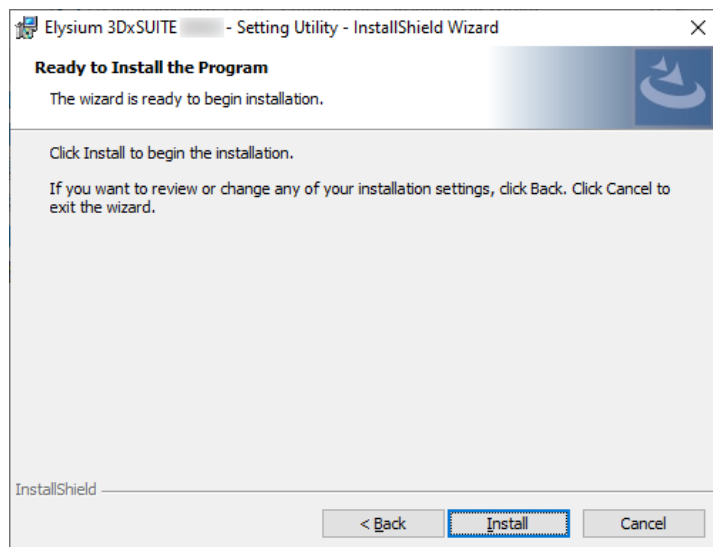
- d. "License Client Setting" dialog will appear. Enter the hostname of the computer where you installed Sentinel RMS License Manager, and if necessary, change the port number. And then click [Next].



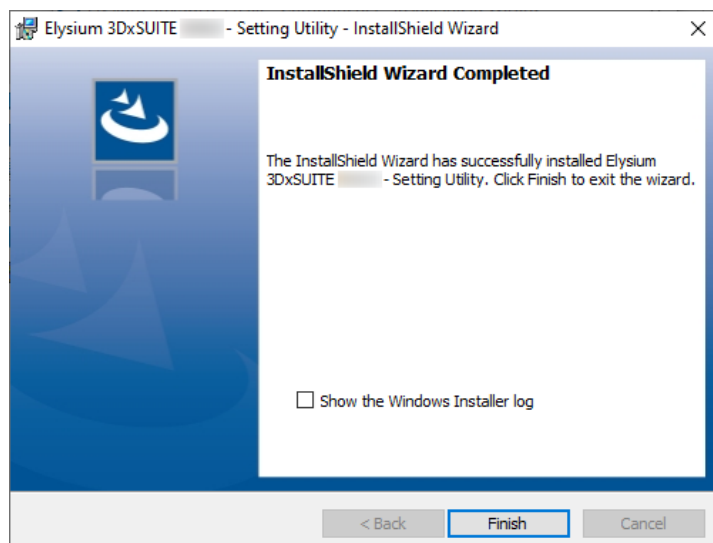
- e. "Set up Scenario Folder" dialog will appear. Change the folder path if necessary, and then click [Next].



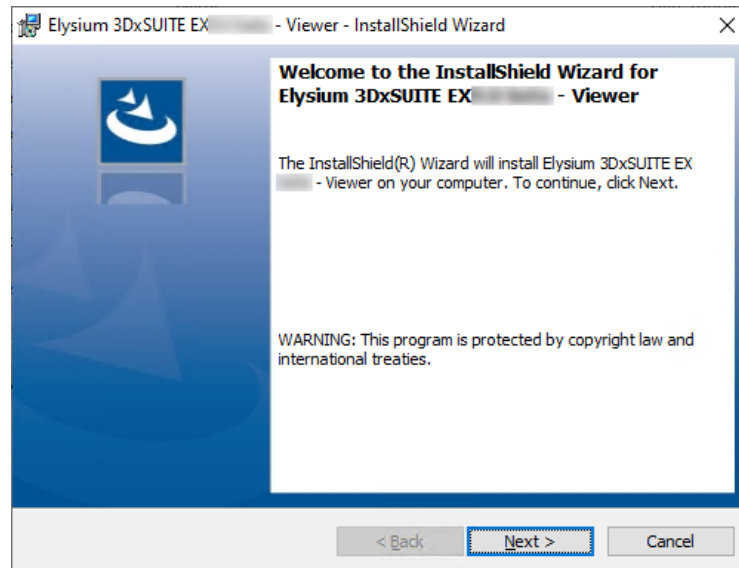
f. Click [Install] to start the installation.



g. When the installation of 3DxSUITE Setting Utility is completed, the following dialog will appear. Click [Finish] to end the installer.



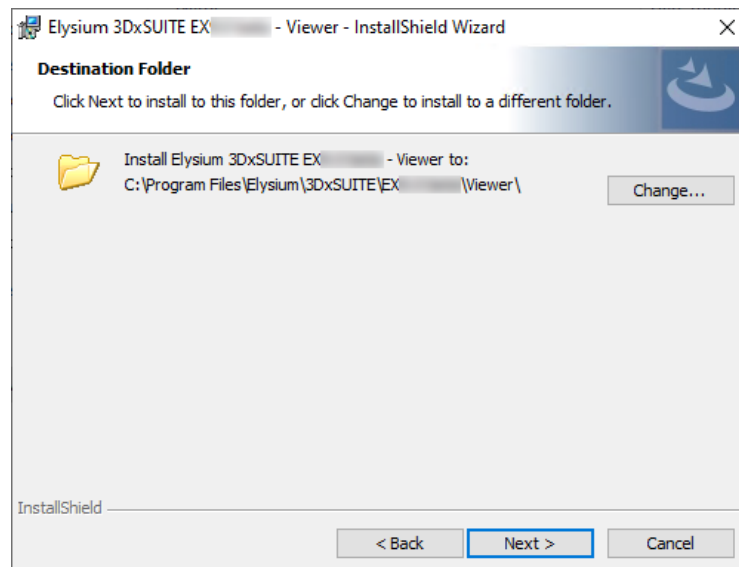
5. Viewer Install Wizard will appear. Click [Next].



6. After reading through carefully, select "I accept the terms in the license agreement" if you agree, then click [Next].

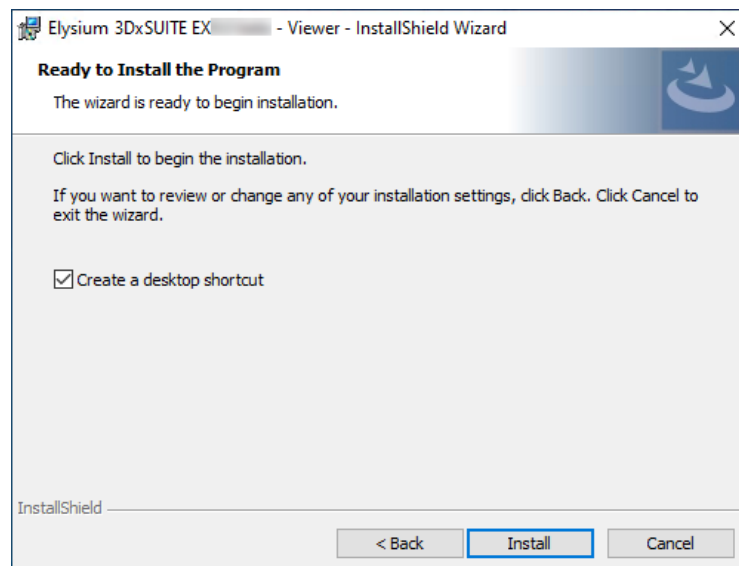


7. The dialog to specify a destination folder will appear. To change the destination folder from default setting, click [Change] and specify the new destination folder. When the setting is finished, click [Next].

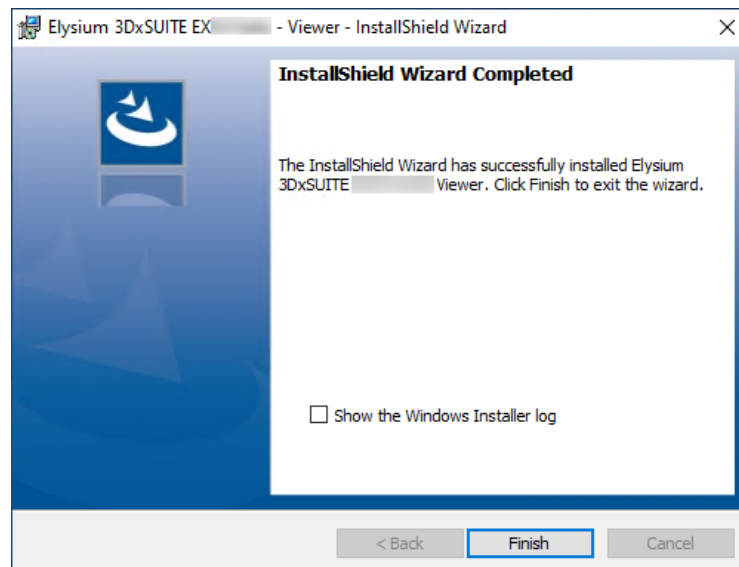


Please ensure that the destination folder path consists of ASCII characters only. If the folder path contains non-ASCII characters, the application may not work as expected.

- The following dialog will appear. Disable "Create a desktop shortcut" if you do not want to create a desktop shortcut. Click [Install] to start the installation.



- When the installation is finished, the following dialog will appear. Click [Finish].



### 3.5.3. Silent Installation

By using the command, you can install or upgrade 3DxSUITE Viewer without GUI operations.

- Example of command

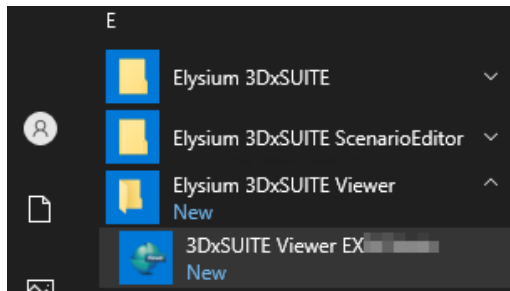
```
Elysium_3DxSUITE_EX9.0_Viewer.exe /s /v"/l* "C:\temp\install.log\"
INSTALLDIR="C:\Program Files\Elysium\3DxSUITE\EX9.0\Viewer\" /qn"
```

This is a list of command arguments to pass to the installer when executing silent installation.

Command Argument	Description	Mandatory / Optional
/s	Execute installation or uninstallation in silent mode.	Mandatory
/v	<p>Specify the following arguments in the form of /v"arg1 arg2 ...":</p> <ul style="list-style-type: none"> <li>• /l* "&lt;Log file&gt;" : Specify the log file path. A space is required between "/l *" and the filename.</li> <li>• INSTALLDIR="&lt;Installation Folder&gt;" : Specify the folder where you want to install. This can be specified only when installing.</li> <li>• /qn : Install or uninstall without displaying the dialog.</li> <li>• /qn+ : Dialog is displayed when installation or uninstallation is completed.</li> </ul>	Optional

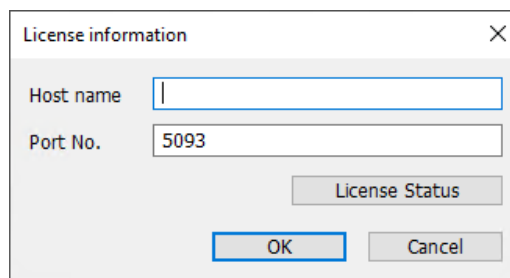
### 3.5.4. Launch

In Windows start menu, select [Elysium 3DxSUITE Viewer] > [3DxSUITE Viewer EX\*.\*)] to launch 3DxSUITE Viewer. (\*.\*) is the version of 3DxSUITE Viewer.)



### Setting License

After the installation, the license settings dialog may appear the first time you start 3DxSUITE Viewer. This dialog will not appear the next time you start. Also, this dialog can be opened by selecting [Help] > [License] after starting 3DxSUITE Viewer.



Confirm the status of license usage from "License Status."



- If you change the initial value in "License Information" dialog and click [OK], the license information will be saved as the setting common for all users using 3DxSUITE Viewer. So even if you change the license settings from 3DxSUITE Setting later on, the license information in 3DxSUITE Viewer will not change.
- If you change the initial value in "License Information" dialog but not clicking [OK] at all, the license will be obtained by referring to the settings in 3DxSUITE Setting. In that case, if the license settings in 3DxSUITE Setting are changed, the license information in 3DxSUITE Viewer will also change.

### 3.5.5. Exit

Select [File] > [Exit] from the menu or close the window to exit.

### 3.5.6. Uninstallation

## Manual Uninstallation

1. From Windows start menu, select [Start] > [Settings](Gear mark).
2. Then select [Apps].
3. From the list of applications displayed in "Apps & features", select "Elysium 3DxSUITE EX\*. \* - Viewer" to uninstall. (\*. \* is the version of 3DxSUITE Viewer)

## Silent Uninstallation

Silent uninstallation can be performed by a command. Installer of the currently installed version will be required.

- Example of command

```
Elysium_3DxSUITE_EX9.0_Viewer.exe /s /x /v"/l* \"C:\temp\uninstall.log\" /qn"
```

This is a list of command arguments to pass to the installer when executing silent uninstallation.

Command Argument	Description	Mandatory / Optional
/s	Execute installation or uninstallation in silent mode.	Mandatory
/x	Execute uninstallation.	Mandatory
/v	Specify the following arguments in the form of /v"arg1 arg2 ...": <ul style="list-style-type: none"> <li>• /l* \"&lt;Log file&gt;\" : Specify the log file path. A space is required between "/ l *" and the filename.</li> <li>• /qn : Install or uninstall without displaying the dialog.</li> <li>• /qn+ : Dialog is displayed when installation or uninstallation is completed.</li> </ul>	Optional

All rights reserved by Elysium or the original author of this material. The content may not be edited, reproduced, distributed, transmitted, displayed, published, broadcast, sold or lent without the prior permission of the author.