

CADdoctor[®] *for* NX

CADdoctor for NX Ver3.0
Release Note

Elysium Co. Ltd.

Last updated: July 6, 2017

[Upgrade of License Server]

Please note that we have decided to postpone the upgrade of license library which was originally planned for CADdoctor for NX Ver3.0.

However, it is necessary to upgrade the license server to Sentinel RMS License Manager v9.1 to utilize CADdoctor for NX Ver3.0.

Please refer to “Sentinel RMS License Manager - Setup & Quick Start Guide” included in the installer of license server.

CAUTION:

The combination of CADdoctor for NX Ver3.0 and Sentinel RMS License Manager v8.6 is not officially supported.

1. Product Name

CADdoctor for NX

2. Version

Ver3.0

3. Supported NX Versions

NX9, NX10, NX11

4. System Requirements

✓ OS: For NX9

Windows 7 Professional/Enterprise(64bit) SP1

Windows 8.1(64bit)

✓ OS: For NX10

Windows 7 Professional/Enterprise(64bit) SP1

Windows 8.1(64bit)

Windows 10(64bit) *NX10.0.3 or later

✓ OS: For NX11

Windows 7 Professional/Enterprise(64bit) SP1

Windows 8.1(64bit)

Windows 10(64bit)

✓ Required CAD licenses

ug_checkmate, gateway, solid_modeling, assemblies, features_modeling


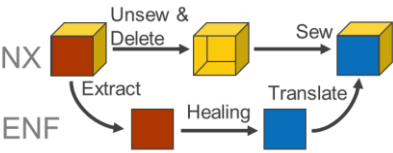
5. Enhancements

A) Added new healing function "Partial Healer"

This allows to repair detected error elements only while maintaining the rest as is.

This also allows to edit the modified elements as healing is performed preserving feature history.

See below for the description of [Healer] and [Partial Healer] in contrast to each other.

	Healer	Partial Healer
Healing Procedure	<ul style="list-style-type: none"> - Translate entire model to ENF, and perform geometry healing - Original model will be suppressed in NX 	<ul style="list-style-type: none"> - Translate only the detected error elements to ENF, and perform geometry healing - Replace the detected error elements by healed elements 
Advantage	Enable to repair almost all PDQ errors. <ul style="list-style-type: none"> - Full Repair: 99% - Partial Repair: 95% 	Healed NX body has editable modeling history(feature tree)
Disadvantage	The modeling history(feature tree) is not editable after healing	The power of healing is lower than Full Repair. In some cases, it fails to sew original geometry and healed geometry, and produce free edges.

Full Repair vs Partial Repair

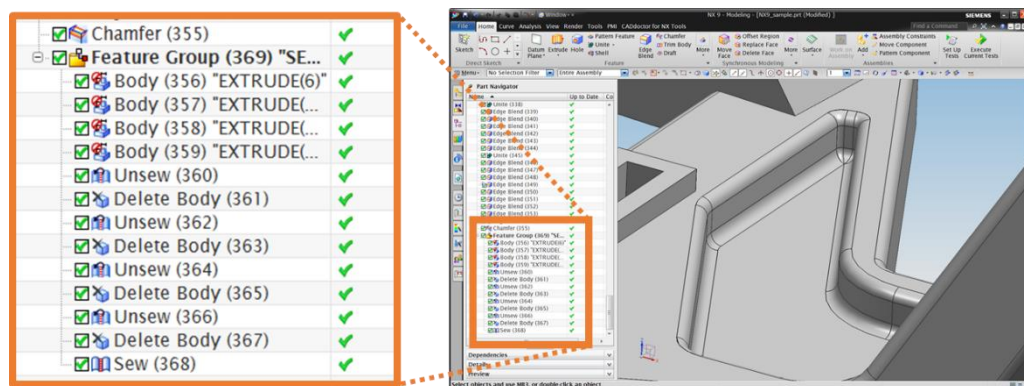


Fig. New features added after [Partial Healer]

B) Changed user interfaces

Removed user tool on NX and changed to run CADdoctor for NX functions from the NX toolbar.

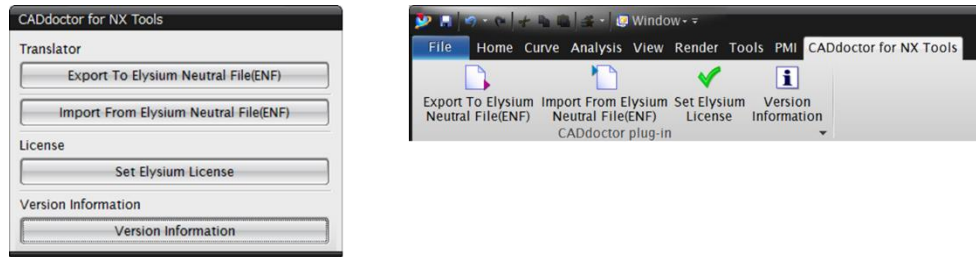


Fig. User interface (Left: Ver2.1 / Right: Ver3.0)

C) Added support of latest CAD versions

Added support of NX10 and NX11.

D) Added support of copy installation

As well as the installation using the installer, you can install CADdoctor for NX by copying the module over to other environment.

6. Note

✓ About CADdoctor for NX Ver3.0 in NX with Teamcenter

It is reported that;

- Geometry healing will not be performed on some of the parts when selecting “Selecting All Parts in Directory” option for Healer / Partial Healer.
- Healed geometry will not be created when running Healer.
- You will be moved to a different application if you were in [Modeling] application when running Healer / Partial Healer.

✓ About CADdoctor for NX Ver3.0 in NX

It is reported that;

- Geometry healing will not be performed if a child part of an assembly is set to the work part when selecting “Selecting All Parts in Directory” option for Healer / Partial Healer.
- Geometry healing will abend if target part(s) are already opened in NX when selecting “Selecting All Parts in Directory” option for Healer / Partial Healer.

✓ An environment-dependent issue is reported that the process may not be completed when running “Healer”.

(Workaround)

Either specify an environment variable

"ELY_CDRNX_SKIP_REGENERATE_DISPLAY=1", or place a file

"skip_regenerate_display" (without file extension) in the TEMP folder specified with "ELY_CDRNX_TEMP_DIR".

7. Copyrights and Licensing

Please refer to the followings;

- ✓ <CD-ROM>%document%\LICENSE%credits.txt
- ✓ <CD-ROM>%document%\LICENSE%XERCES_LICENSE.txt