



**Elysium
InfiPoints®**

Elysium InfiPoints for Revit

Installation Guide

— Application / License Server —

Elysium Co. Ltd.

August 2022

Index

Important Notice	1
1. Overview	2
1.1. What's Possible with InfiPoints for Revit	2
1.2. Required License for InfiPoints for Revit	2
1.3. System Requirements	2
2. Set up Elysium InfiPoints for Revit	3
2.1. How to Install Elysium InfiPoints for Revit	3
2.2. How to Register Elysium InfiPoints for Revit to Revit	7
2.3. How to Use Elysium InfiPoints for Revit	8
3. License Settings	13
3.1. Settings on License Server	13
3.2. Settings on Client PC	14

Important Notice

These documents are copyrighted and protected by Japanese law. No part of this document may be reproduced or transmitted in any form or by any means without prior consent of Elysium Co. Ltd. Any unauthorized copying of these documents will be a violation of the related software license and copyright laws.

The contents of this documentation include sensitive information. Registered users must protect confidential information against a leak of accident.

The contents of this documentation may include technical inaccuracies or typographical errors and it may be revised without prior notice.

In no event will Elysium Co. Ltd. be liable to anyone for any damages, including any lost profits, lost savings, lost data, incidental, special punitive or consequential damages or professional malpractice arising out of or in connection with this agreement or its breach even if Elysium Co. Ltd. has been advised of or should be aware of the possibility of such damages.

Trademarks

InfiPoints is a registered trademark of Elysium Co. Ltd.

Revit® is a registered trademark of Autodesk, Inc.

Other brand or product names are trademarks or registered trademarks of their respective companies or organizations.

Elysium Co. Ltd.
Press Tower 10th Floor, 11-1 Asahi-cho, Naka-ku
Hamamatsu, Shizuoka 430-0927 JAPAN
TEL: +81 53 413 1000, FAX: +81 53 413 1010

1. Overview

"InfiPoints for Revit" is a plug-in software for three-dimensional BIM software, Revit®. By registering the plug-in software into Revit®, you can import the dedicated Revit® file (*.iprvt) exported from Elysium InfiPoints.

1.1. What's Possible with InfiPoints for Revit

InfiPoints for Revit passes the data created with Elysium InfiPoints into Revit for planes, pipes, structures, and ducts. Elements excluding planes must be selected from standard parts.



- Please note that user-defined structures are not supported.
- When the inclination angle of reducer, hopper, elbow, etc. is too steep, an error may occur when importing into Revit.
- Joint parts and boxes are passed on to Revit separately without any connections. Therefore, even if their positions change on Revit, the position of other parts are not adjusted accordingly.

1.2. Required License for InfiPoints for Revit

IFP-RVT license is required to export a dedicated Revit® file from Elysium InfiPoints. No license is required to import a dedicated Revit® file into Revit.

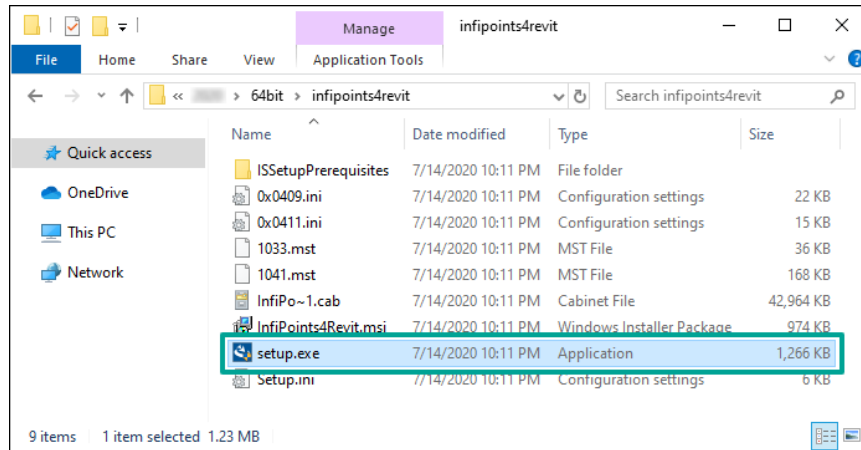
1.3. System Requirements

Supported Versions	Revit 2022®, Revit 2023®
Supported Languages	Japanese, English
Other Requirements	In accordance with the system requirements of Revit 2022® or Revit 2023®

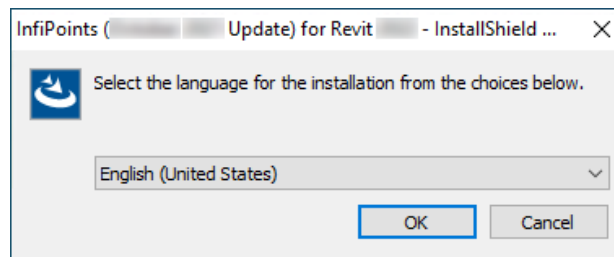
2. Set up Elysium InfiPoints for Revit

2.1. How to Install Elysium InfiPoints for Revit

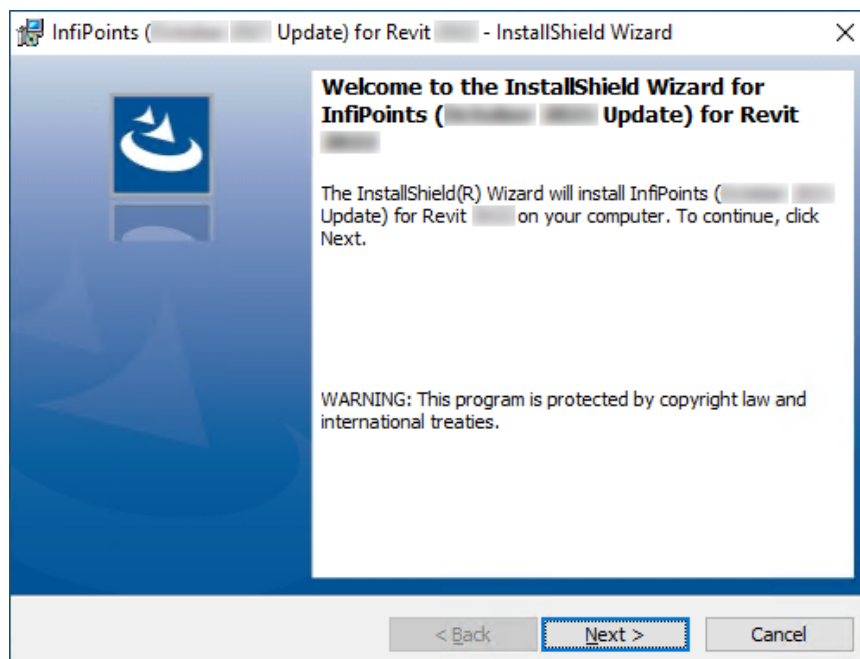
1. Double-click the "setup.exe" in "infipoints4revit" folder.



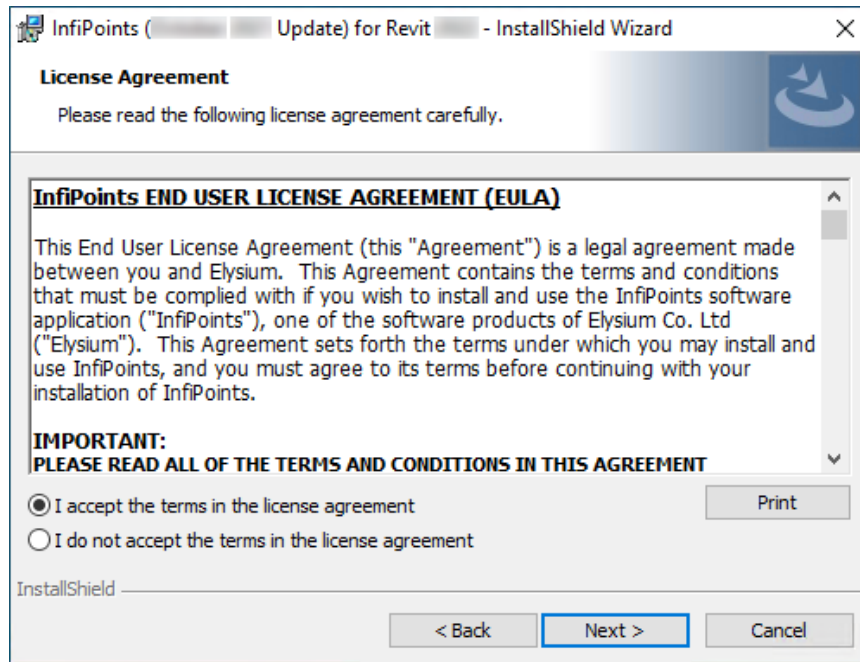
2. "Language setting" dialog will appear. Specify the language and click [OK].



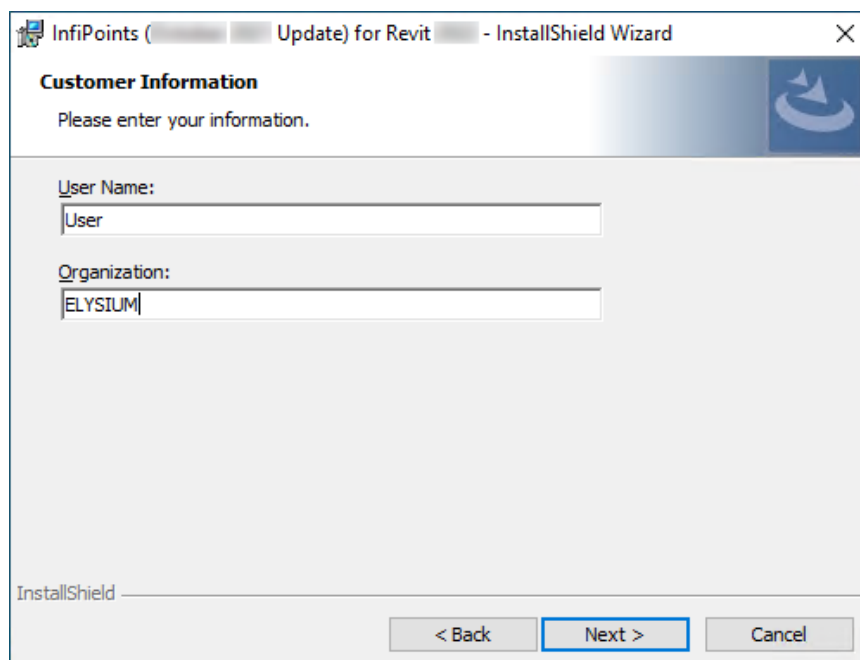
3. InfiPoints for Revit InstallShield Wizard will appear. Click [Next].



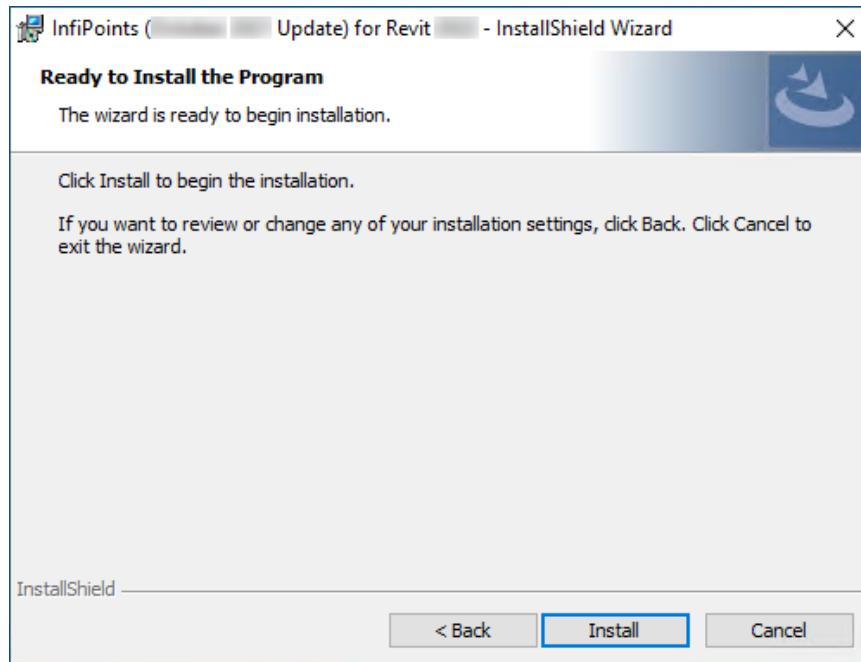
4. "License Agreement" dialog will appear. Read the contents carefully and click [Next].



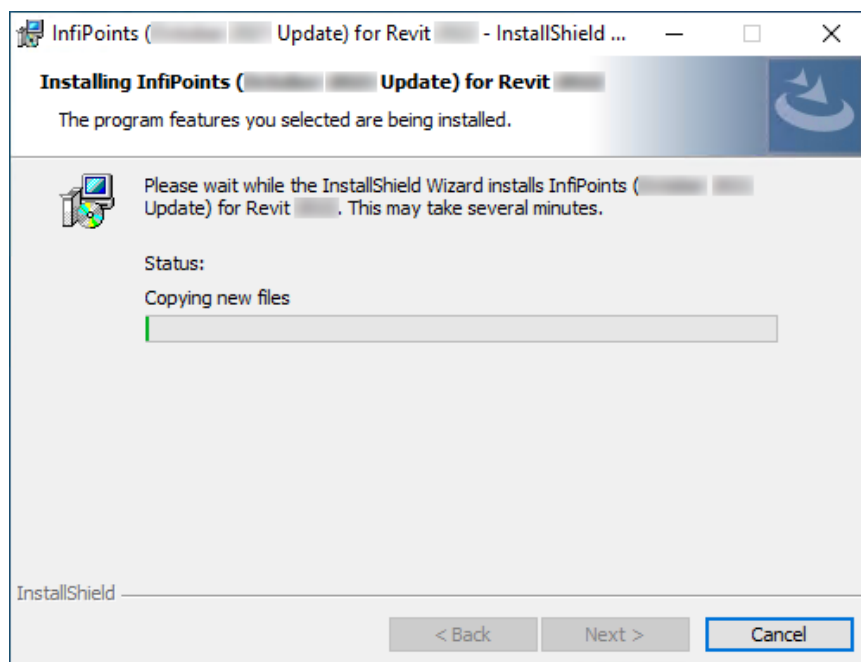
5. The below dialog will appear. Enter the user name and the organization, and click [Next].



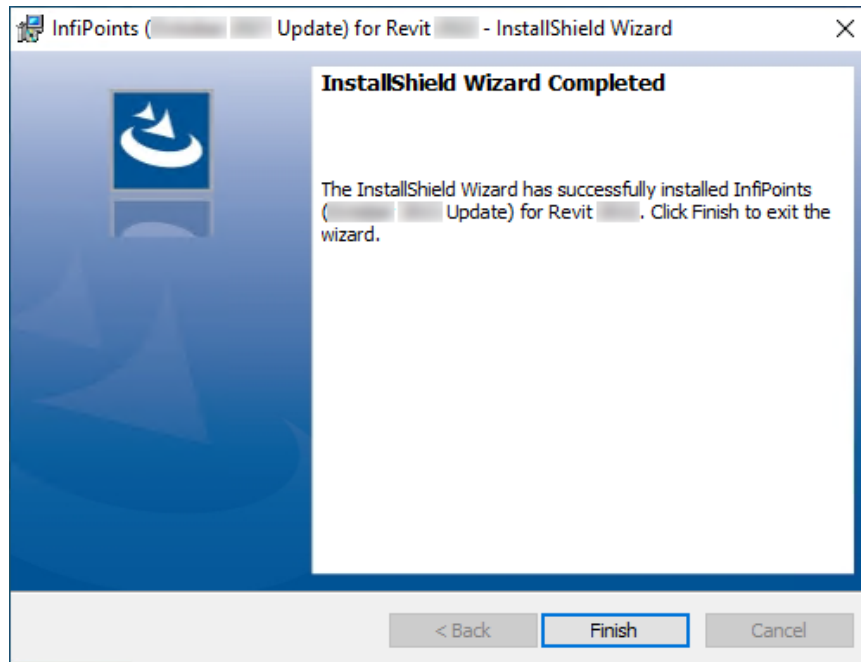
6. A dialog will appear confirming whether the installation can be executed. Click [Install].



Installation will start and the below dialog will appear.



7. After successfully completing the installation, the below dialog will appear. Click [Finish] to end the installation.



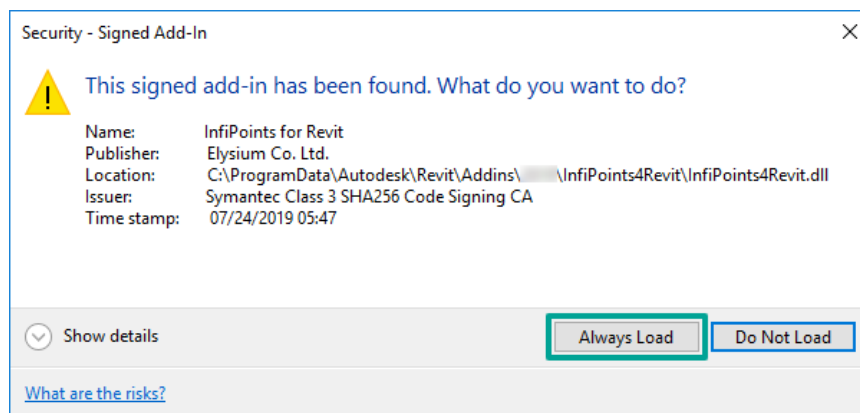
2.2. How to Register Elysium InfiPoints for Revit to Revit

To newly install Elysium InfiPoints for Revit, follow the below procedures.

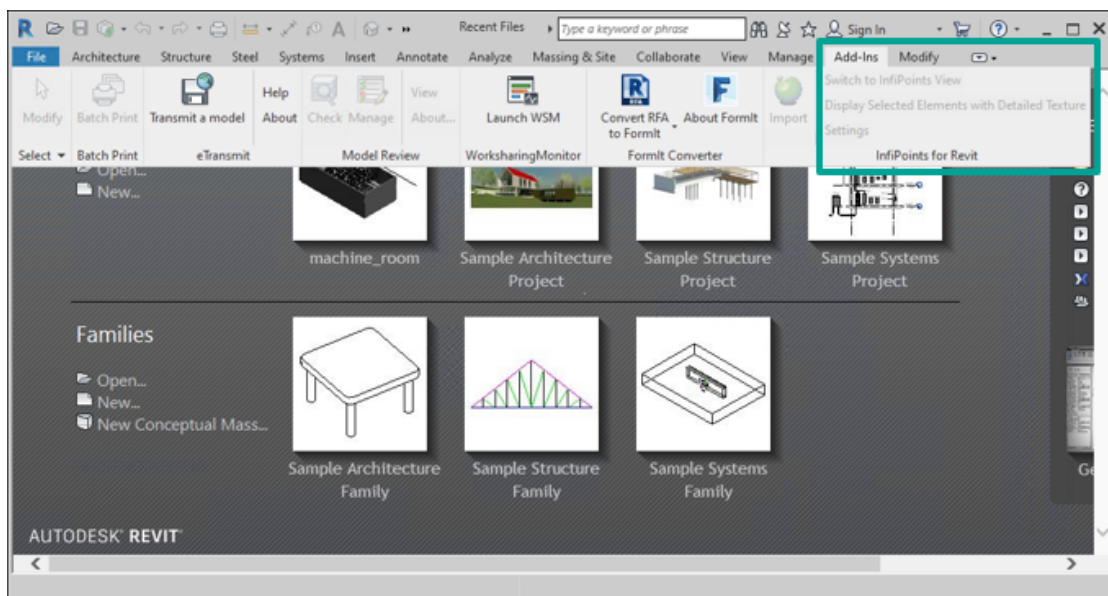
1. Start Revit 2022® or Revit 2023®.



2. The following dialog will appear. Click [Always Load].



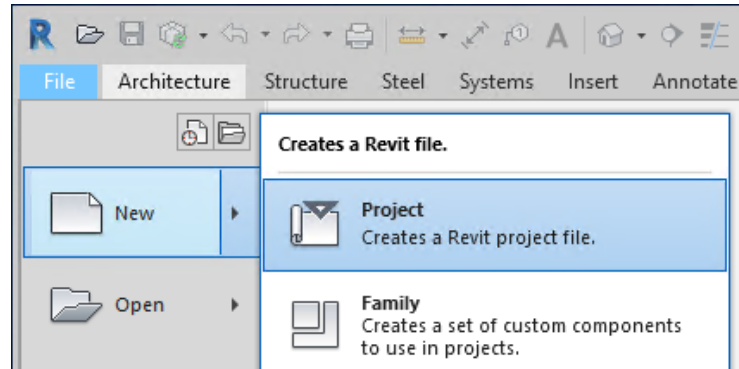
Start Revit®. When Elysium InfiPoints for Revit plug-in has been registered successfully, the functions will appear at the right end of [Add-Ins] tab.



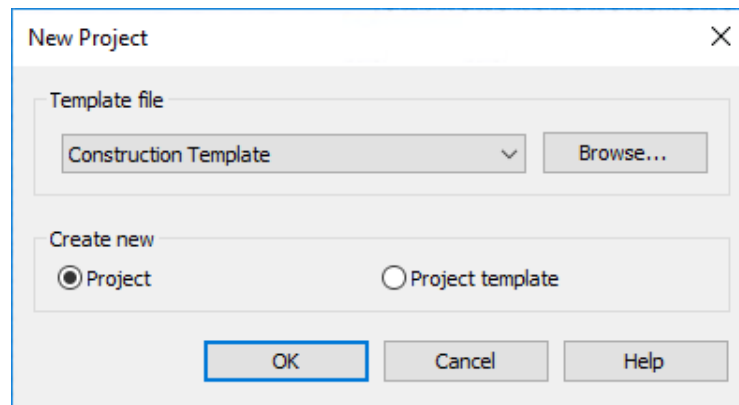
2.3. How to Use Elysium InfiPoints for Revit

Create a new project. Import the intermediate Revit® file with Elysium InfiPoints for Revit Plug-in.

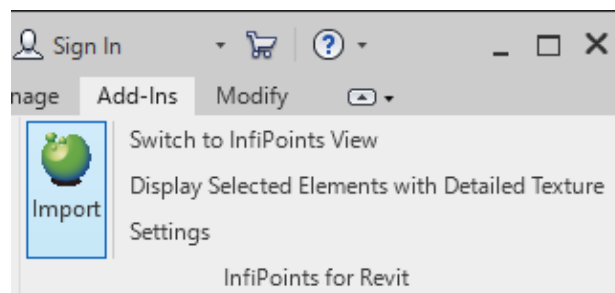
1. Select [File] > [New] > [Project].



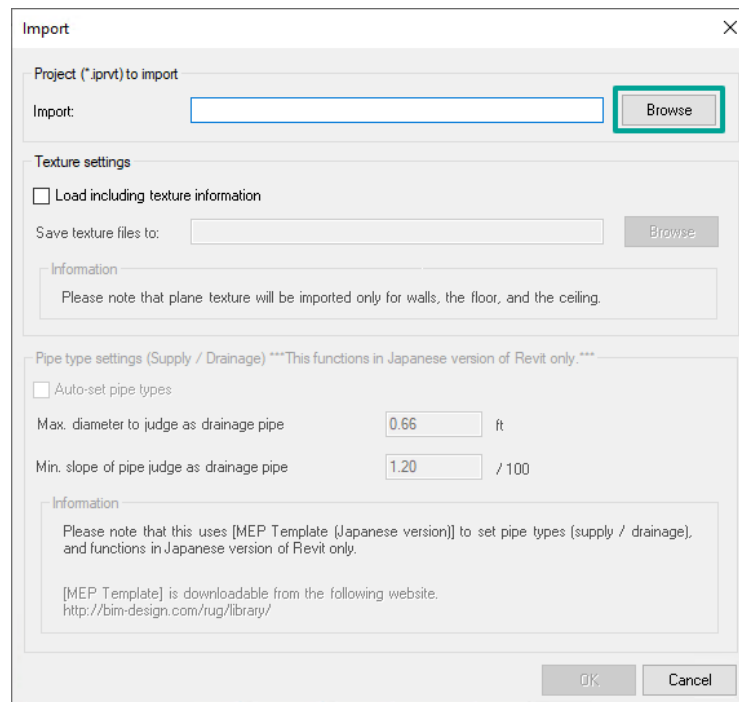
2. "New Project" dialog will appear. Specify the template and click [OK].



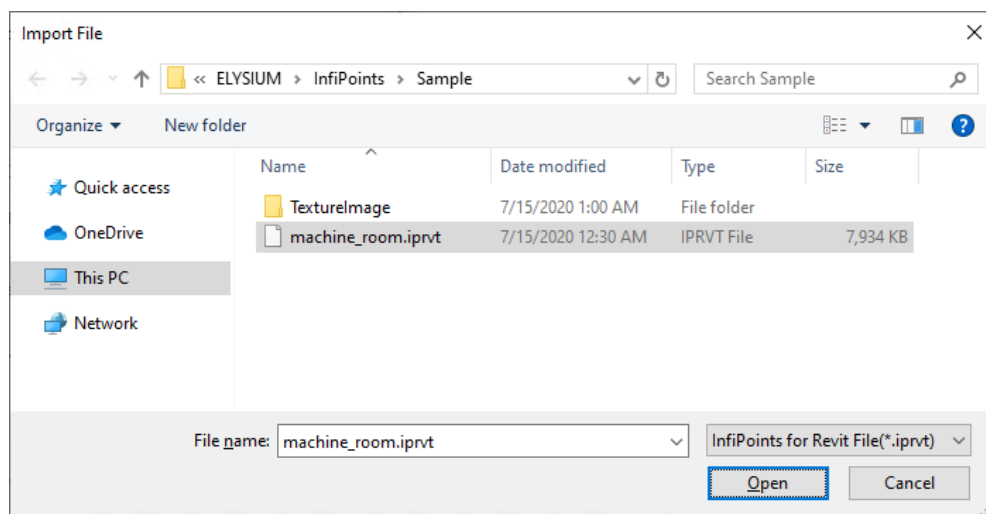
3. A project using the specified template will appear.
Select [Add-Ins] > [InfiPoints for Revit] > [Import].



4. "Import" dialog will appear. Click [Browse] in "Project (*.iprvt) to import" option.



5. "Import File" dialog will appear. Specify the dedicated Revit® file (*.iprvt), and then click [Open].



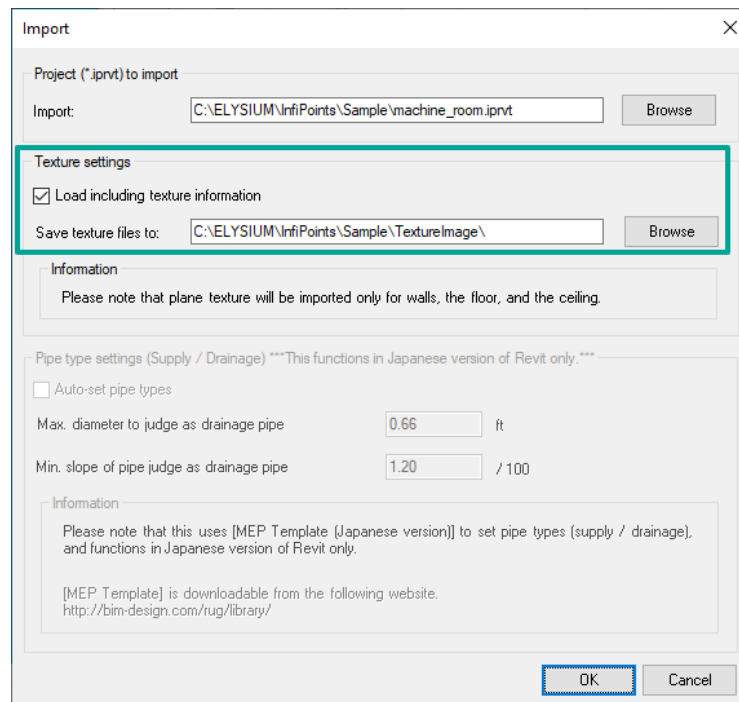
Please refer to "[Elysium InfiPoints Operation Manual Vol.6 Exporting Files for Revit](#)" for more details about exporting files for Revit®.

6. To import a texture image, enable "Load including texture information" in "Import" dialog. Then, in the texture folder path, specify the folder where you want to place the texture files.



Please note that importing texture is not mandatory. When not importing texture, leave "Load including texture information" disabled.

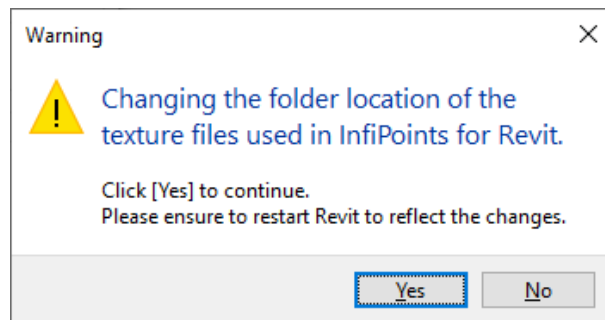
Please note that plane texture will be imported only for walls, the floor, and the ceiling.



To open Revit Files (*.rvt) in Revit® and display the texture, you need the files within the texture folder of Elysium InfiPoints.

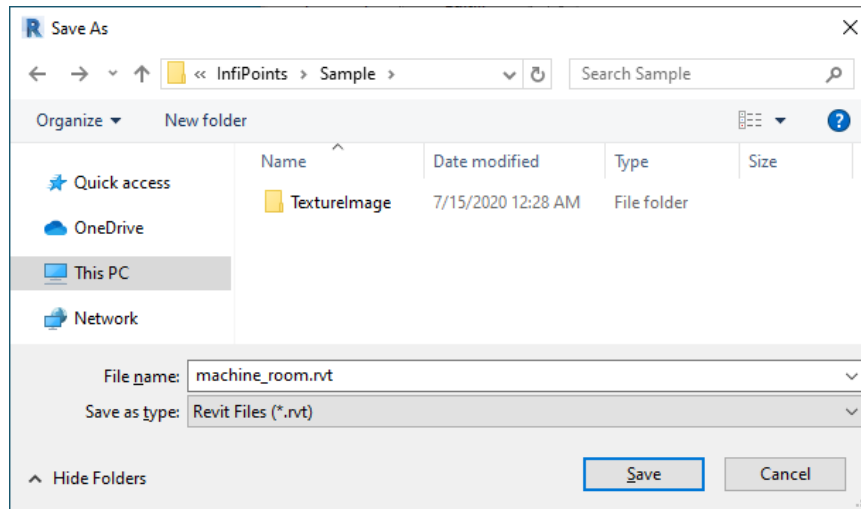
When opening the file on a different computer, copy the files within the texture folder or import the intermediate file (*.iprvt) for Revit® again.

When you change the settings of the texture folder, the following dialog will appear. Please make sure to reboot Revit®.

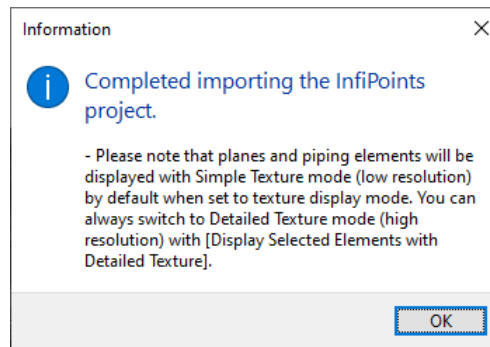


After setting all the options, click [OK].

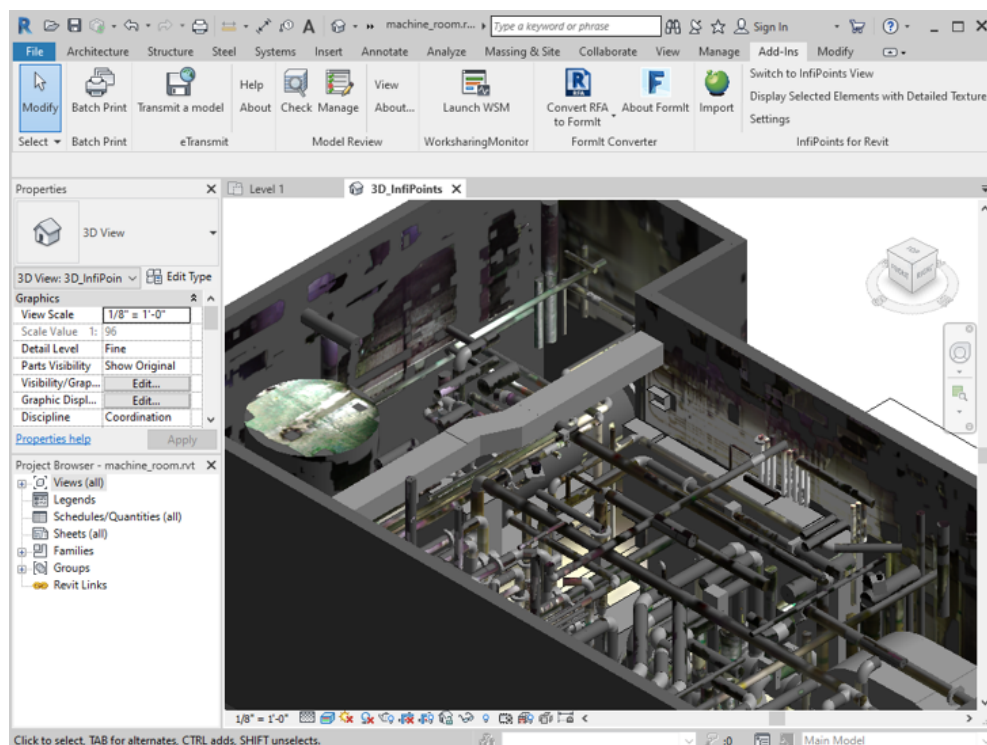
7. If the project has not been saved, "Save As" dialog will appear. To create Revit Files (*.rvt), specify the target folder and the file name, then click [Save].



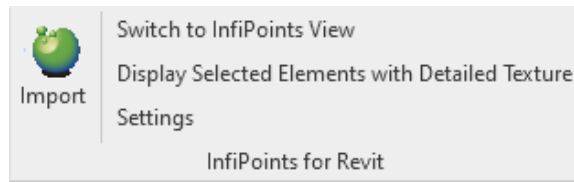
Importing the intermediate file for Revit® (*.iprvt) will start. After importing is completed, the following dialog will appear.



Please note that the message in this dialog will change depending on the options.



- Commands for Elysium InfiPoints for Revit

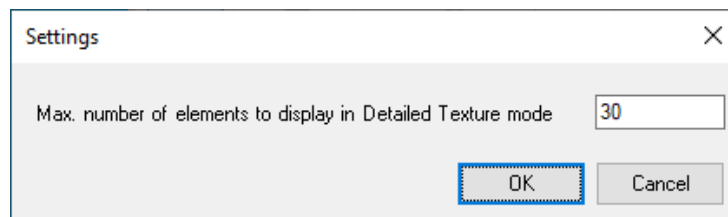


- [Switch to InfiPoints View]: Current view will switch to [3D_InfiPoints].
- [Display Selected Elements with Detailed Texture]: Simple texture will switch to detailed texture.

- ■ Operation



1. Execute the command and select the element (plane (wall, floor, ceiling), pipe (straight pipe)) that you want to switch the texture from simple to detailed.
 2. Click [Finish] at the top left of Revit® screen to finish the selection.
- [Settings]: "Settings" dialog will appear. Set the maximum number of detailed textures to be displayed.



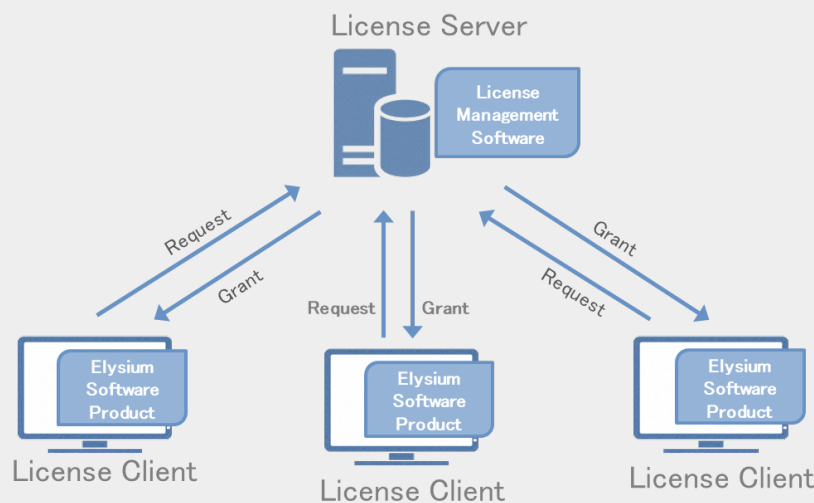
3. License Settings

3.1. Settings on License Server

Please refer to "Sentinel RMS License Manager Setup & Quick Start Guide" included in "Sentinel_RMS_License_Manager_*.zip".

License Management software

The license management software is a Server-Client security software.

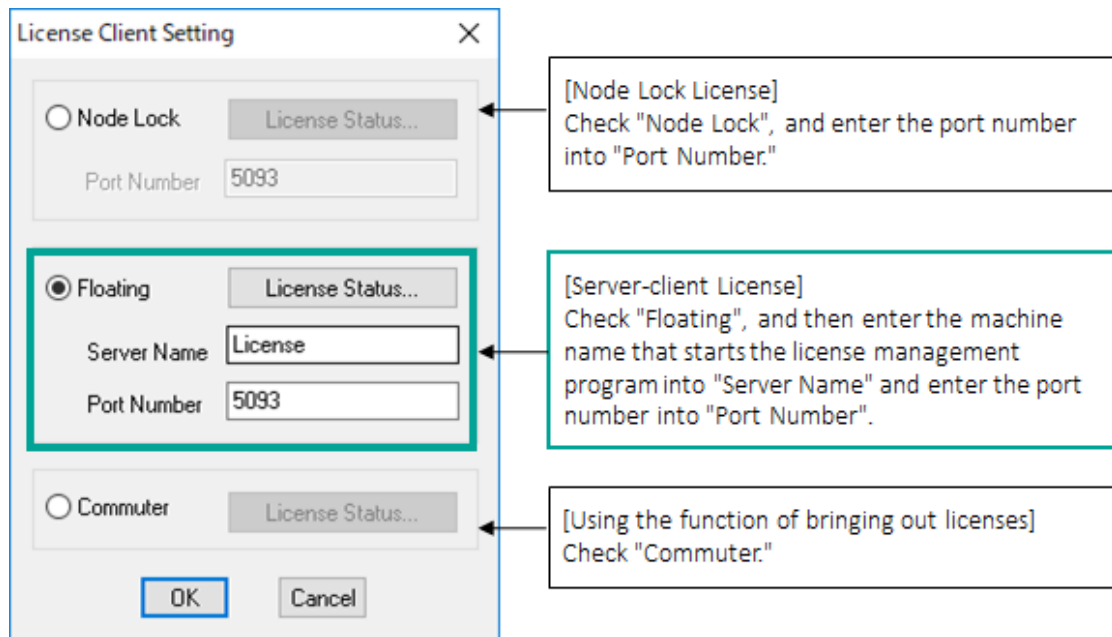


Elysium license management software will be required. The license management software manages the User License Information (the number of users and the license expiration date etc.). You need to launch this license management software before using Elysium InfiPoints. Elysium InfiPoints connects with the license management software and checks whether the user has a valid license to use Elysium InfiPoints.

The machine on which the license management software is installed is called the license server. The machine on which the software that receives the issued license is called the license client. Elysium InfiPoints specifies "Host Name" of the machine that is installed the license management software (license server) and "Port Number" for connection with the license management software.

3.2. Settings on Client PC

1. "License Client Setting" dialog will appear. Specify "Floating" and enter the Server Name. Then click [OK].



Please note that regardless of which license type is selected, the status of license usage can be confirmed in "License Status".

All rights reserved by Elysium or the original author of this material.
The content may not be edited, reproduced, distributed, transmitted, displayed,
published, broadcast, sold or lent without the prior permission of the author.