



**Elysium
Infipoints®**



Elysium Infipoints Installation Guide

- Application / License Server -

Elysium Co. Ltd.

April 2026

Index

Important Notice	1
1. About Installation	2
1.1. Caution	2
1.2. System Requirements	2
1.3. Supported CAD Versions	4
1.4. License Management software	5
2. Install Elysium InfiPoints	6
3. Initial Setup and License Configuration	11
3.1. Start Elysium InfiPoints	11
3.2. Configure License Settings	12
3.3. Configure Elysium InfiPoints System Settings	13

Important Notice

These documents are copyrighted and protected by Japanese law. No part of this document may be reproduced or transmitted in any form or by any means without prior consent of Elysium Co. Ltd. Any unauthorized copying of these documents will be a violation of the related software license and copyright laws.

The contents of this documentation include sensitive information. Registered users must protect confidential information against a leak of accident.

The contents of this documentation may include technical inaccuracies or typographical errors and it may be revised without prior notice.

In no event will Elysium Co. Ltd. be liable to anyone for any damages, including any lost profits, lost savings, lost data, incidental, special punitive or consequential damages or professional malpractice arising out of or in connection with this agreement or its breach even if Elysium Co. Ltd. has been advised of or should be aware of the possibility of such damages.

All rights reserved, © Elysium Co. Ltd.

Distributed by Elysium Co. Ltd.

Trademarks

InfiPoints is a registered trademark of Elysium Co. Ltd.

Other brand or product names are trademarks or registered trademarks of their respective companies or organizations.

Elysium Co. Ltd.
Press Tower 10th Floor, 11-1 Asahi-cho, Chuo-ku, Hamamatsu
Shizuoka 430-0927 JAPAN
Tel: +81 (0) 53 413 1000
Email: infipoints@elysium.co.jp

1. About Installation

1.1. Caution

You need Administrator privileges to install Elysium products.

To utilize Elysium InfiPoints, please ensure that you have Edit permissions on the following folders;

- Elysium InfiPoints installation folder
- %TMP%
- %TEMP%
- %USERPROFILE%
- %APPDATA%
- The Work and Export folders

1.2. System Requirements

CPU	Computer and CPU capable of running OS listed below
Memory	16GB or more
OS	Windows 11 Pro (*1)
Supported Language	Japanese, English, Chinese
Display	Display capable of minimum 1280 x 1024 with True Color capability
Graphics	<p>Video card that supports OpenGL ^(*2) (e.g., Quadro, GeForce)</p> <ul style="list-style-type: none">• Please note that the visualization of point clouds may be unsteady on the computer with integrated graphic controller. (e.g., IntelHD Graphics)• When used with a remote desktop connection, OpenGL may not work properly.

(*1) Windows is a registered trademark of Microsoft Corp.

(*2) OpenGL is a registered trademark of Hewlett Packard Enterprise.

Please be aware that Elysium InfiPoints does not work normally on some video cards. Followings are video cards which Elysium has tested that Elysium InfiPoints works.

Tested OpenGL Video Cards

- NVIDIA Quadro K420
- NVIDIA Quadro K600
- NVIDIA Quadro K620
- NVIDIA Quadro K2000
- NVIDIA Quadro K4000
- NVIDIA Quadro M6000
- NVIDIA Quadro P620
- NVIDIA GeForce GTX 1060 6GB
- NVIDIA GeForce GTX 1070
- NVIDIA GeForce GTX 1070Ti
- NVIDIA GeForce RTX 2070 SUPER
- NVIDIA GeForce RTX 3060
- NVIDIA GeForce RTX 3060Ti
- NVIDIA GeForce RTX 3080
- NVIDIA GeForce RTX 4060 Laptop
- NVIDIA GeForce RTX 5060Ti
- NVIDIA T1000
- NVIDIA RTX A4000
- NVIDIA RTX A5000 Laptop



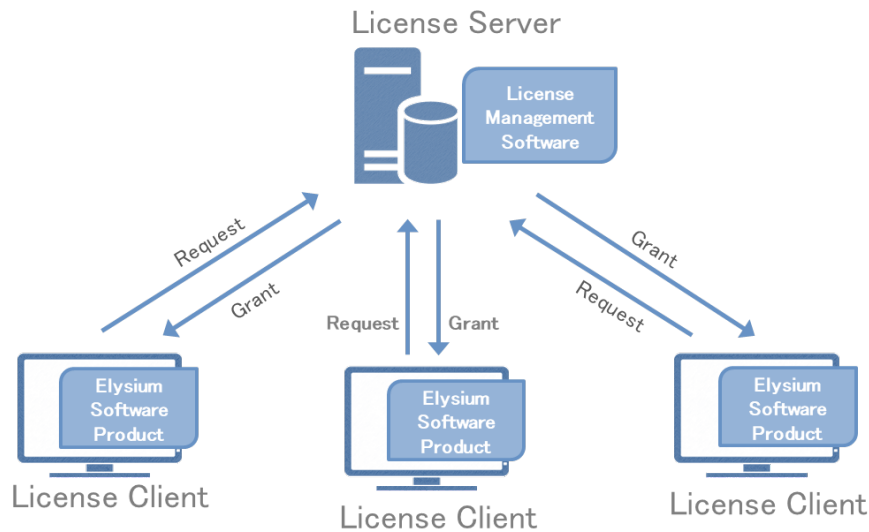
- Each company name and product name of OpenGL board is a trademark or registered trademark of each company.
- Above list is for desktop computer. Please contact your support agent of the distributor for video cards for laptop computers.

1.3. Supported CAD Versions

No.	Import / Export Options	Supported Versions	Note
1.	IGES	V5.2, V5.3	
2.	STEP	AP203, AP214, AP242 (ed1, ed2, ed3, ed4)	
3.	CATIA V4	V4.2.1 - V4.2.5	
4.	CATIA V5	Import: R10 - R35(V5-6R2025) Export: R14, R19 - R35	
5.	Creo Parametric Pro/E	2000i - Wildfire5 Creo Elements/Pro 5.0 Creo Parametric 1.0 - 11.0	Data import only
6.	NX	UG10 - NX 2412 Series	Data import only
7.	Parasolid	V7 - V37	
8.	ACIS	R6 - R34	
9.	JT	Import: v6.4 - v10.10 Export: v9.0 - v10.10	

1.4. License Management software

The license management software is a Server-Client security software.



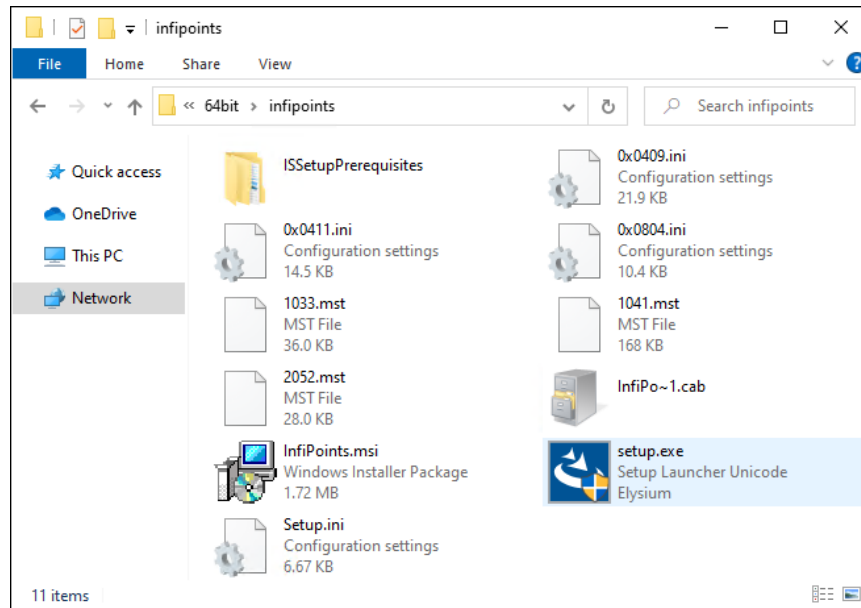
Elysium license management software will be required. The license management software manages the User License Information (the number of users and the license expiration date etc.). You need to launch this license management software before using Elysium InfiPoints. Elysium InfiPoints connects with the license management software and checks whether the user has a valid license to use Elysium InfiPoints.

The machine on which the license management software is installed is called the license server.

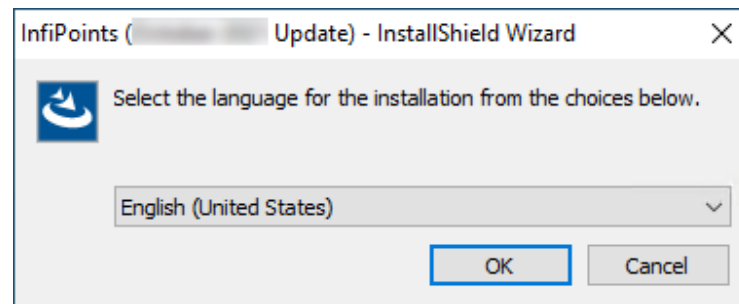
The machine on which the software that receives the issued license is called the license client. Elysium InfiPoints specifies "Host Name" of the machine that is installed the license management software (license server) and "Port Number" for connection with the license management software.

2. Install Elysium InfiPoints

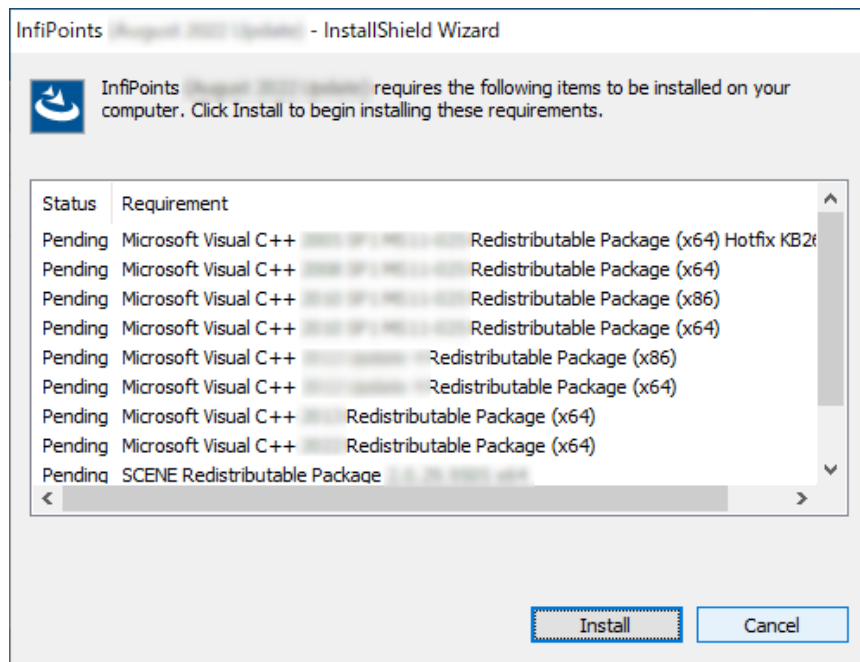
1. Run "setup.exe" included in the Elysium InfiPoints installation package.



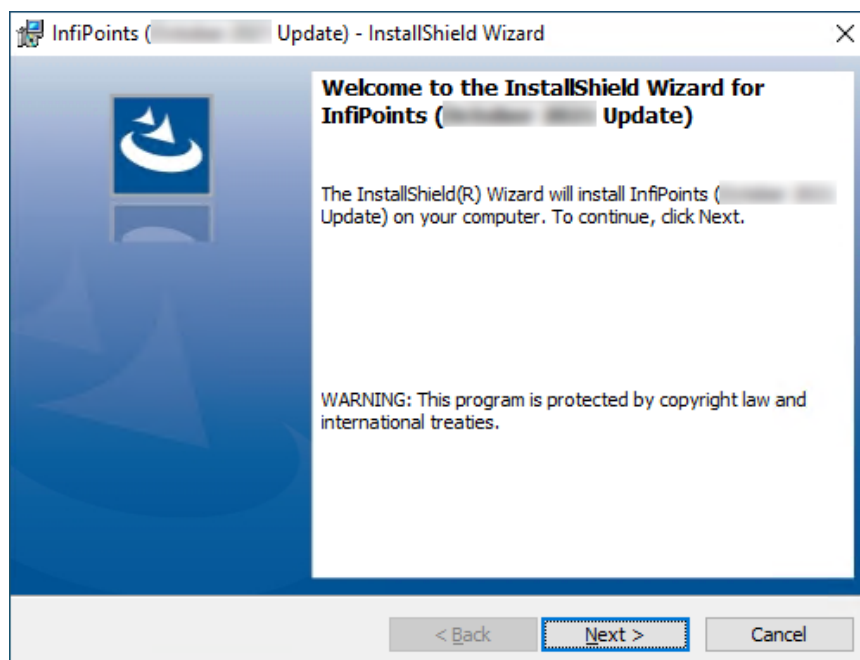
2. Select the language for the installation and click [OK].



3. If below dialog is displayed, click [Install] to start the installation. (If required programs are already installed, this dialog will not appear.)



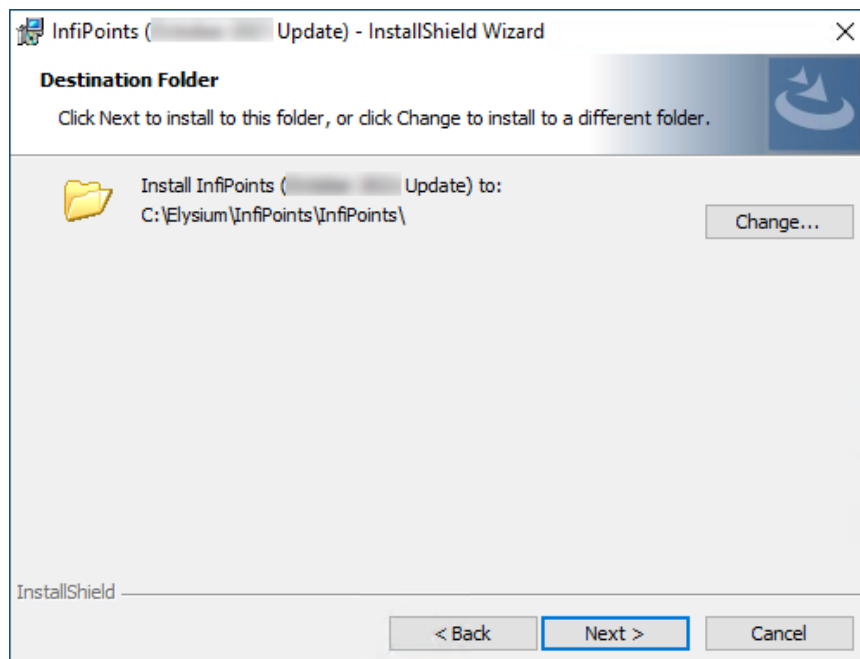
4. Elysium InfiPoints setup screen will appear. Click "Next".



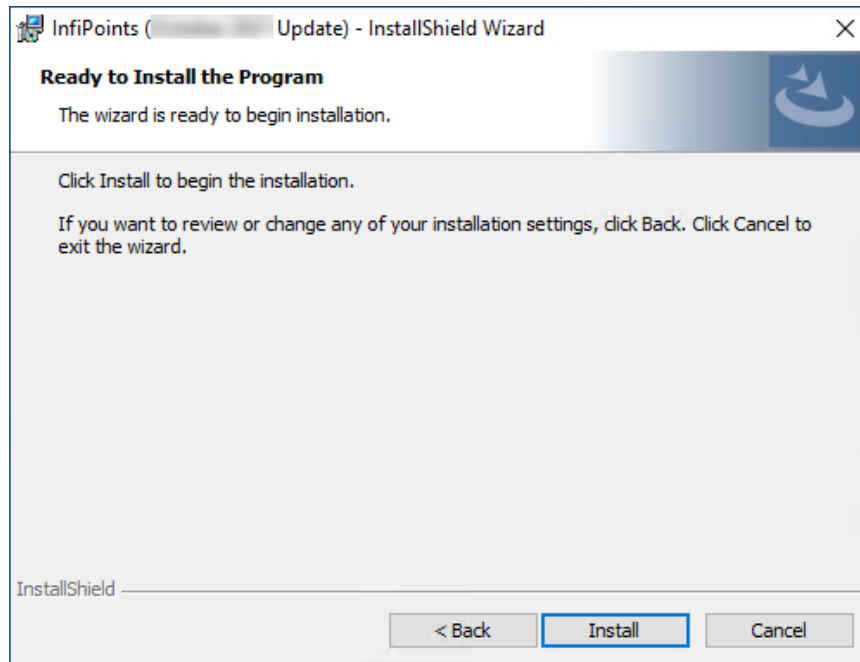
5. "License Agreement" will be displayed. Read through carefully and check "I accept the terms in the license agreement" if you agree, and then click [Next].



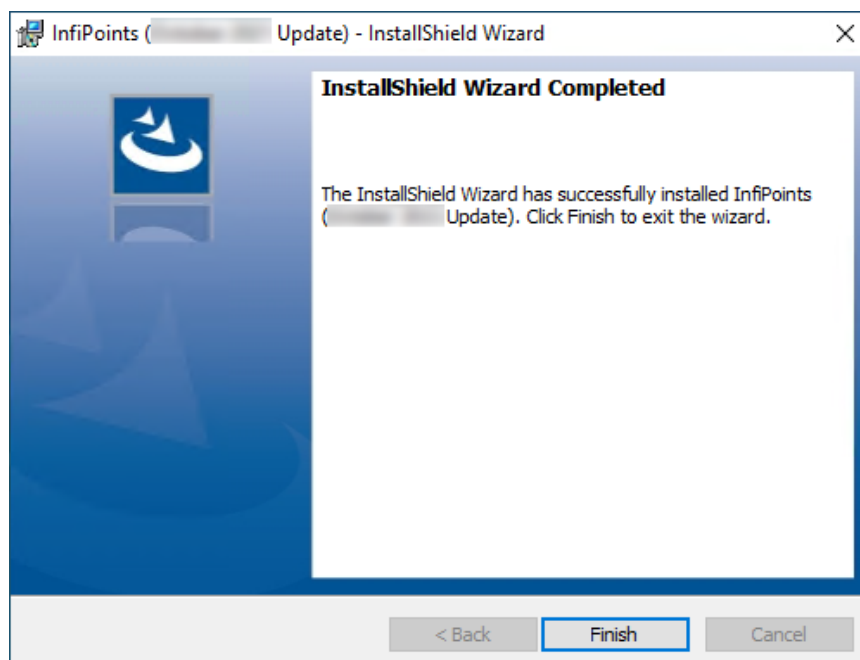
6. The dialog to specify a destination folder will appear. To change the destination folder from default setting, click [Change] and specify the new destination folder. When the setting is finished, click [Next].



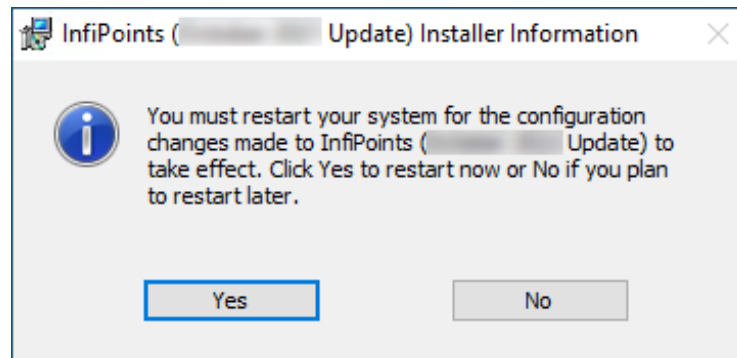
7. The following dialog will appear. Click [Install].



8. When the installation has completed, the following dialog will appear. Click [Finish].




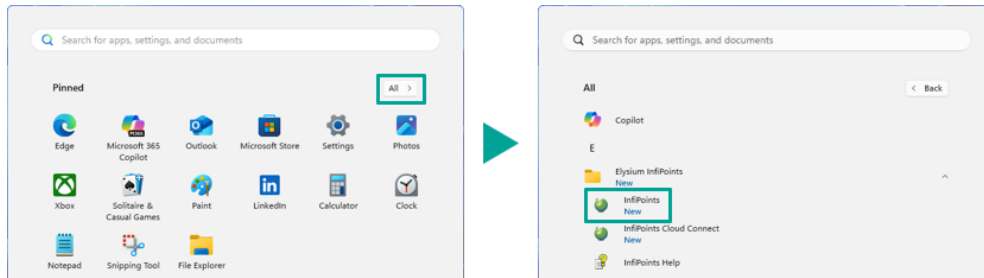
A dialog may appear asking you to reboot the OS after the installation is complete. In that case, click [Yes] to restart the OS.



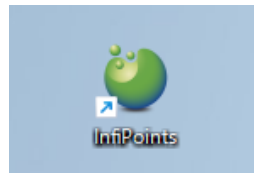
3. Initial Setup and License Configuration

3.1. Start Elysium InfiPoints

1. Click [Start] button .
 - To switch to the full application list, select [All] in the upper-right corner of the Windows Start menu.
2. Select InfiPoints in the application list.

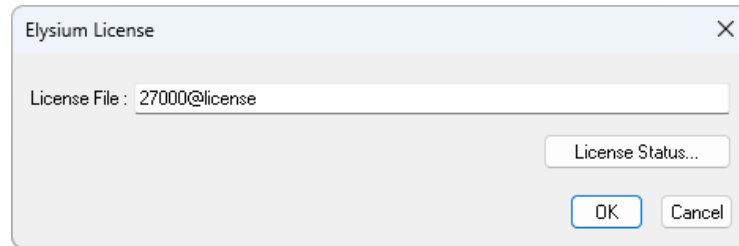


You can also start Elysium InfiPoints by double-clicking the shortcut icon on the desktop.



3.2. Configure License Settings

1. When you start Elysium InfiPoints for the first time after installation, the Elysium License dialog appears. Specify the license settings, and select [OK].





- License File:

Specify the Elysium License Server using this format: "<Port number>@<Host name>"

Example:

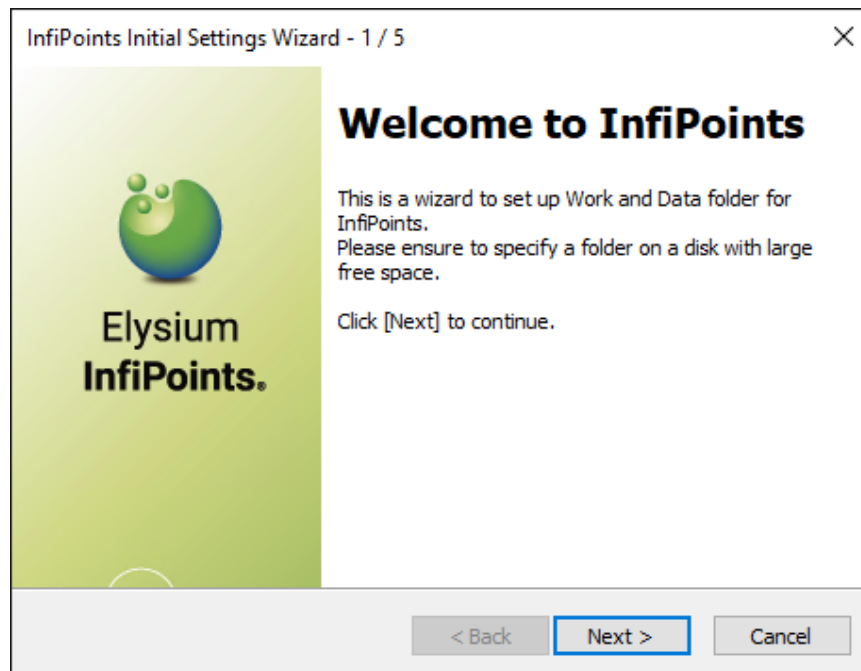
27000@licenseserver



- The port number for the Elysium License Server is "27000" by default.
- License settings are saved in the application, and this dialog will not appear the next time you start Elysium InfiPoints. To change the license settings, select [Application Menu ] > [Option] > [License Setting ].
 - After changing the license settings, restart Elysium InfiPoints to apply the changes.
- Click [License Status] to view the license usage status.

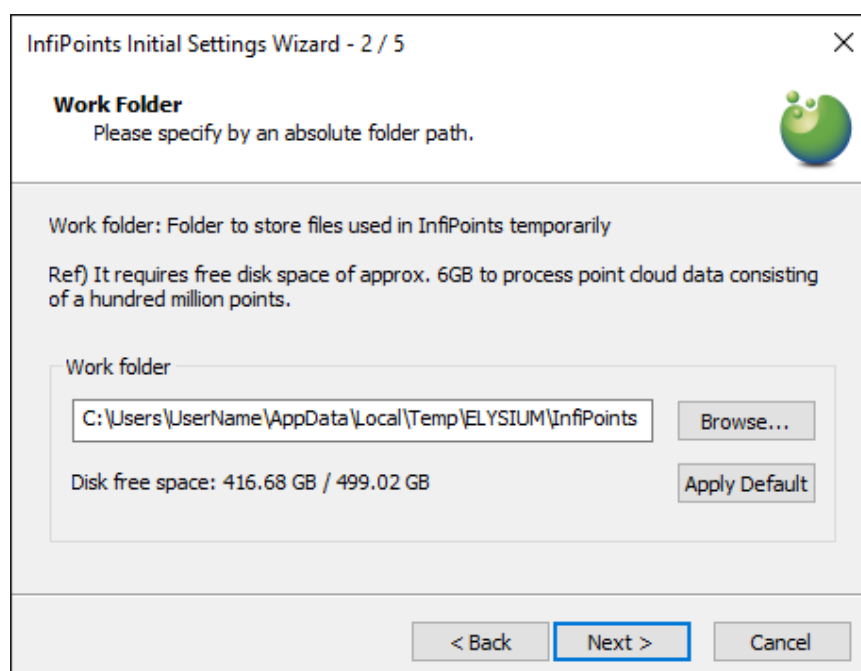
3.3. Configure Elysium InfiPoints System Settings

1. Once the license setup is completed, the initial settings wizard will appear. Click [Next] to start the initial setup.

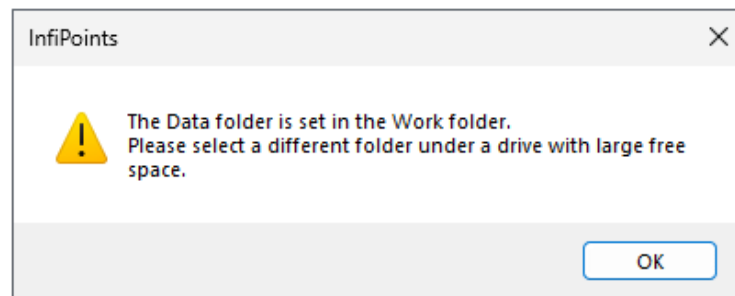
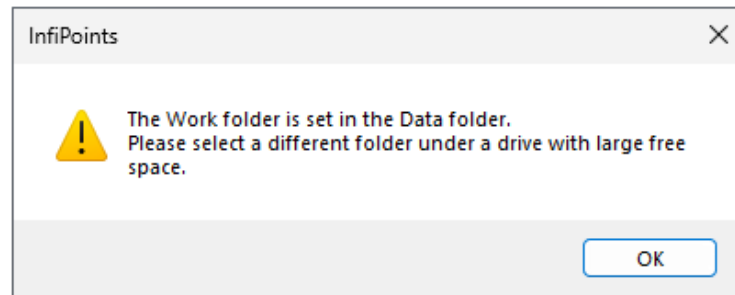


Specify Work and Data folders during the initial setting. If you have been using previous version of Elysium InfiPoints, this wizard does not appear. The previously set Work and Data folders are used.

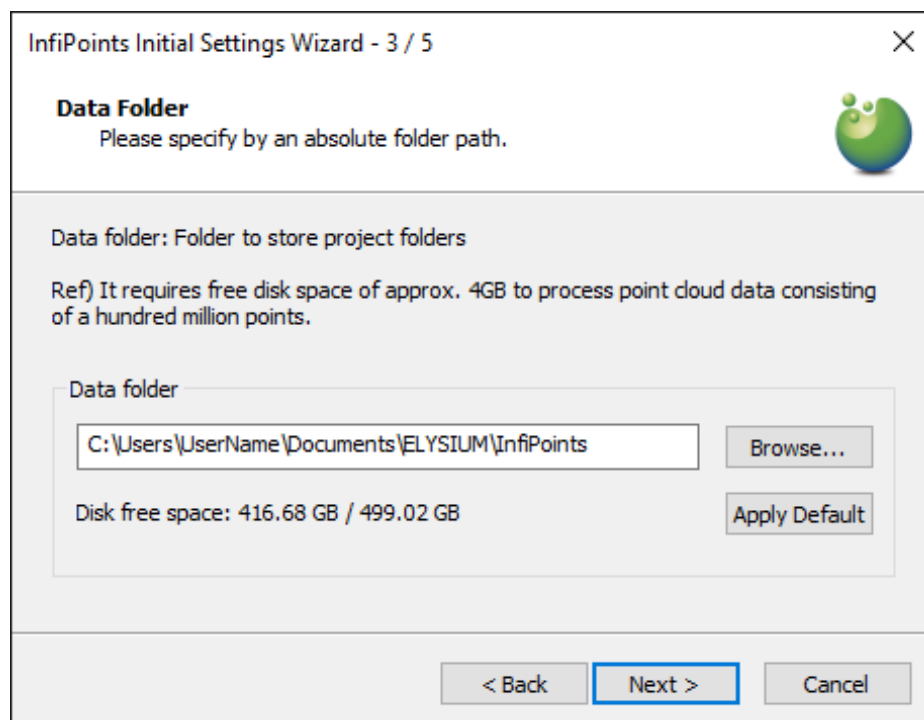
2. Specify the Work folder for Elysium InfiPoints. The Work folder is to store temporary files used in Elysium InfiPoints. Click [Browse] to customize the Work folder location, or skip to use the default settings, and then click [Next] to continue.



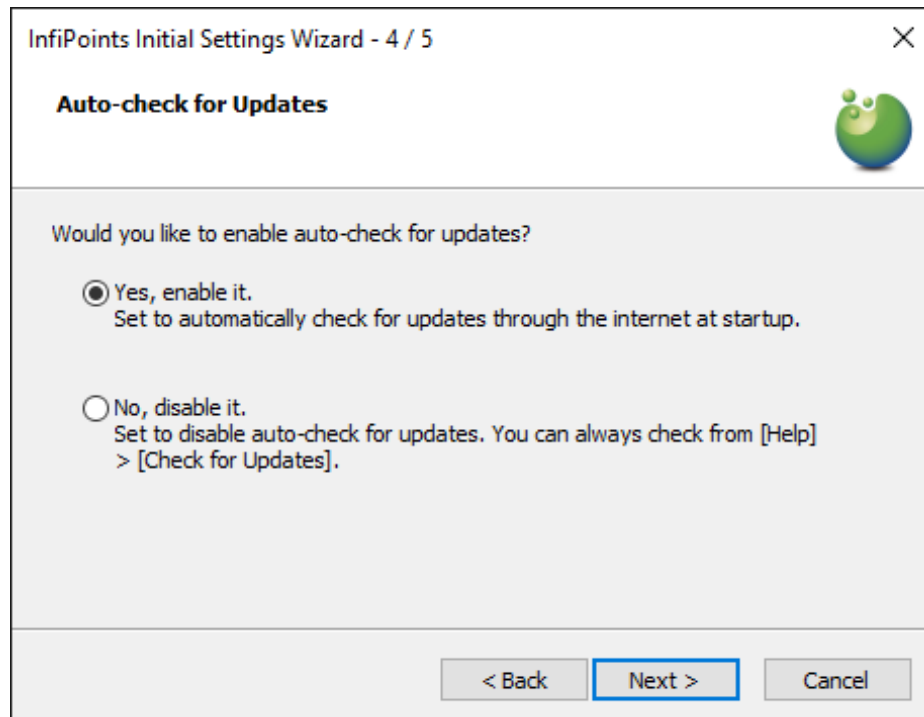
- Please ensure that the Work / Data folders are not set to a root folder such as C:\ or D:\.
- Please also ensure that the Work folder is not set under the Data folder, and vice versa.



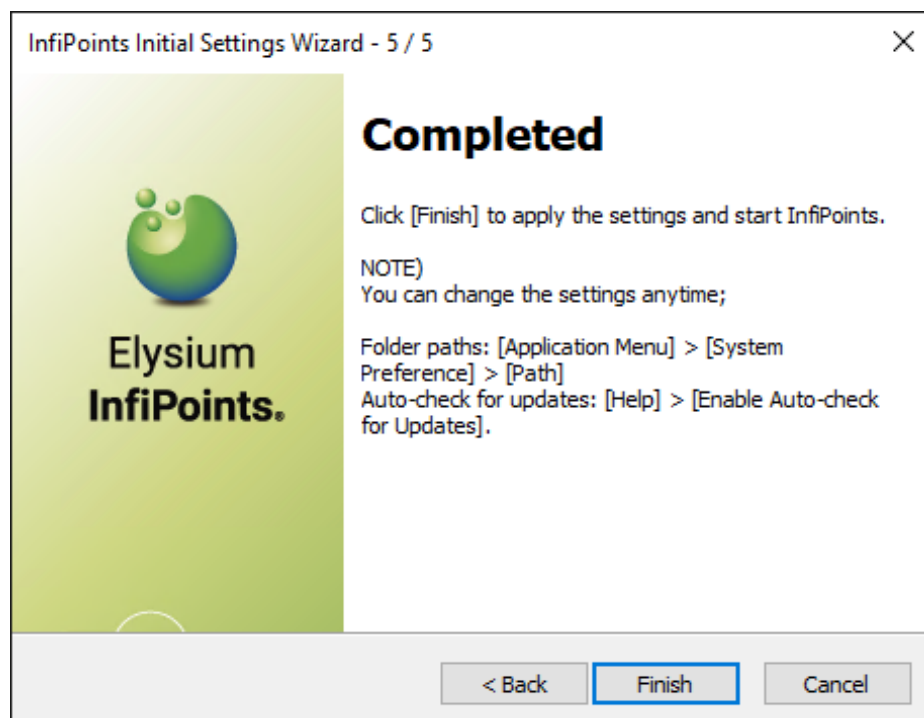
3. Specify the Data folder for Elysium InfiPoints. The Data folder is to store the project folders created in Elysium InfiPoints.
Click [Browse] to customize the Data folder location, or skip to use the default settings, and then click [Next] to continue.



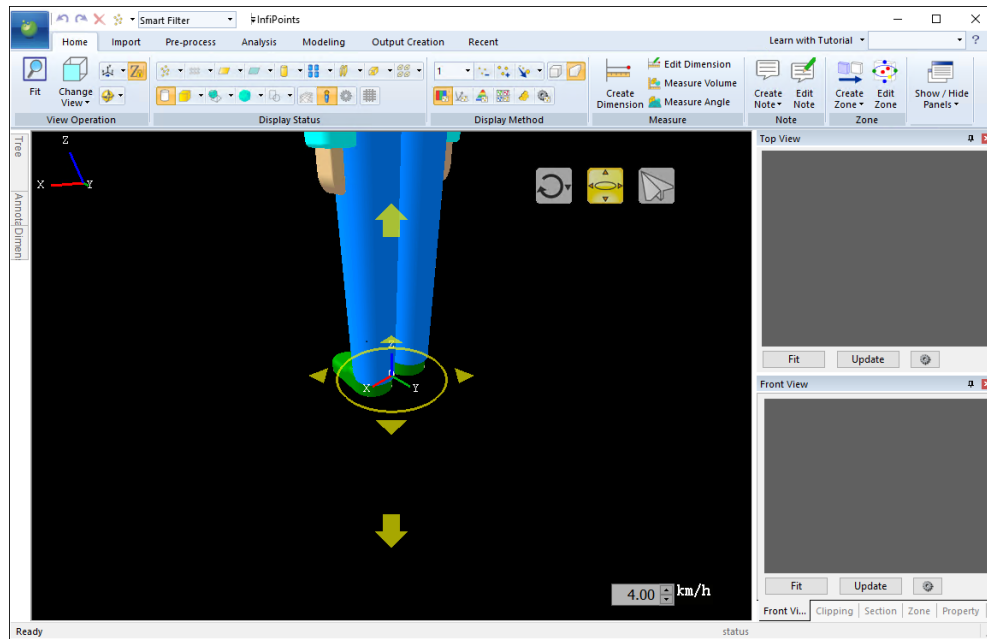
4. In "Auto-check for Updates" step, specify whether you want to automatically check for the latest version, and then click [Next].



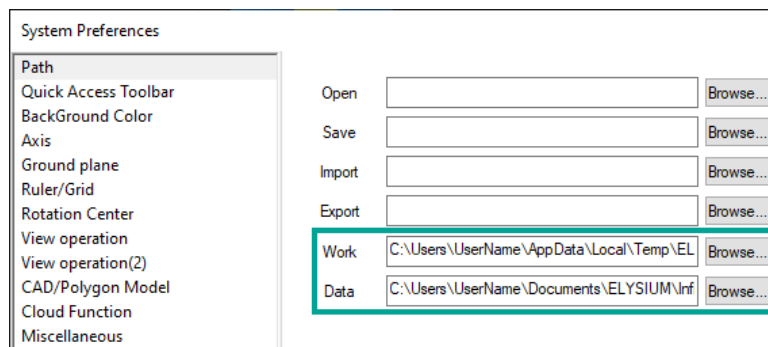
5. Click [Finish] to apply the settings and start Elysium InfiPoints.



6. Elysium InfiPoints starts.



- You can change the settings from [Application Menu] > [System Preference] > [Path] page anytime.
 - After changing the system settings, restart Elysium InfiPoints to apply the changes.



All rights reserved by Elysium or the original author of this material.
The content may not be edited, reproduced, distributed, transmitted, displayed,
published, broadcast, sold or lent without the prior permission of the author.