



**Elysium
InfiPoints®**



Release Note

InfiPoints May 2025 Update

May 23, 2025

Elysium Co. Ltd.

Index

- 1. Updates in InfiPoints May 2025 Update..... 1
 - 1.1. Key Enhancements 1
 - 1.2. Other Enhancements and Specification Changes 5
 - 1.3. Fixed Issues..... 10
- 2. Known Issues..... 11
- 3. Hardware Requirements 12

1. Updates in InfiPoints May 2025 Update

1.1. Key Enhancements

InfiPoints License Restructuring

InfiPoints Standard Package Now Includes BIM/CAD Export

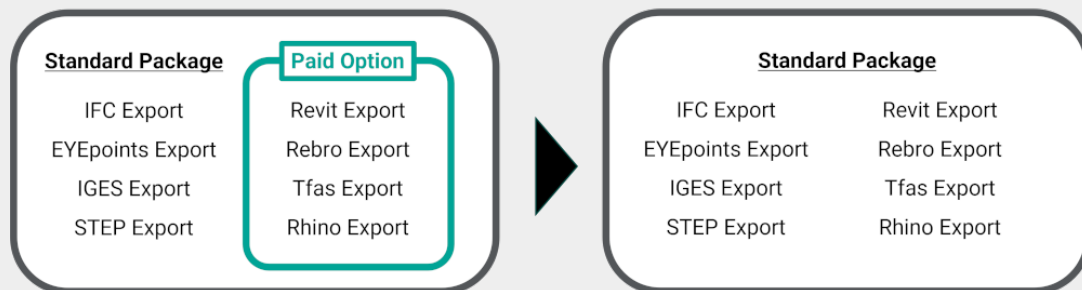
Updated the InfiPoints Standard Package structure to include the BIM export options (Revit, Rebro, and Tfas) and Rhino option.

Note): VR option and CAD export options will remain as separate paid options.

InfiPoints Standard Package Restructuring

Till the December 2024 Update

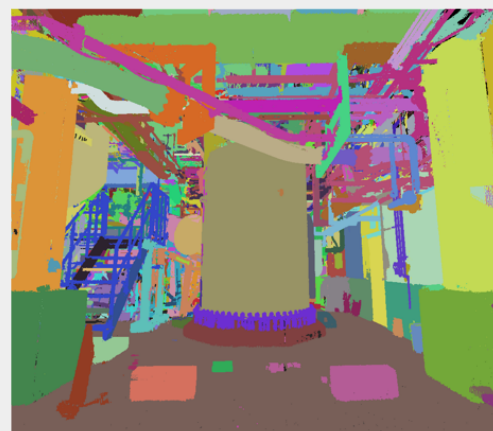
Since the May 2025 Update



Point Cloud Auto-segmentation

Point Cloud Auto-segmentation To Classify Points into Functional Segments

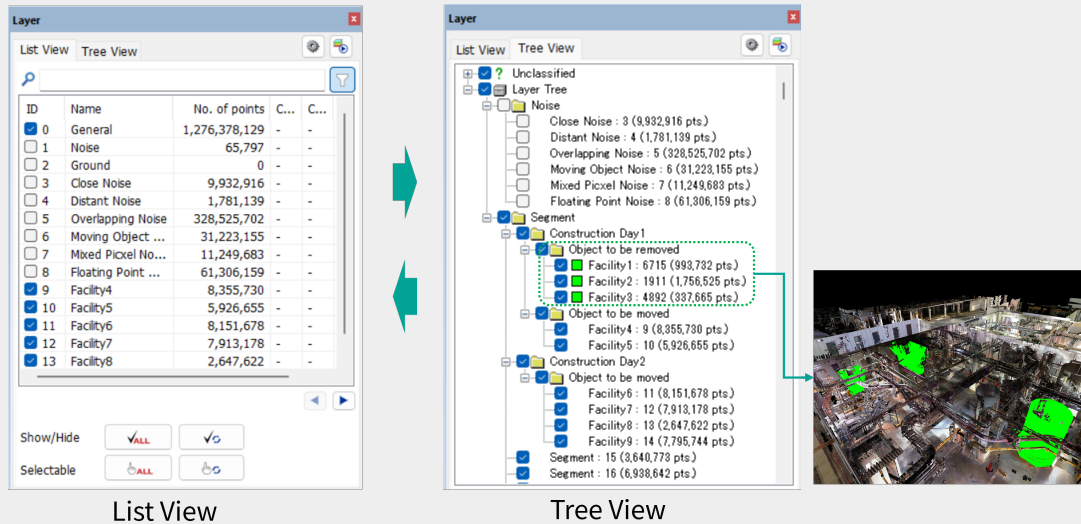
Added a feature to classify point cloud data into object-based functional segments. Each segmented group is managed as a layer in the [Layer] panel.



Layer Management

Support for Layer Tree View for Enhanced Layer Management Experience

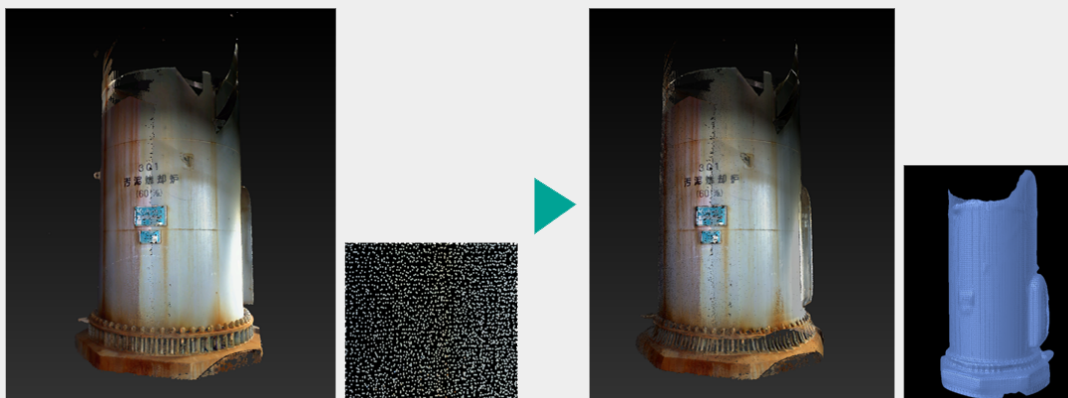
Enhanced to increase the maximum number of layers per project from 256 to 65,536, and added support for the tree structure view in [Layer] panel. This allows to group layers by equipment type, construction phase, and more—making it easier to toggle visibility and apply group settings.



Textured Polygon Model Generation

Textured Polygon Model Generation from Point Cloud

Enhanced to generate polygon models with texture images created using point cloud data and photos. This allows the effortless creation of lightweight, photo-realistic 3D models.

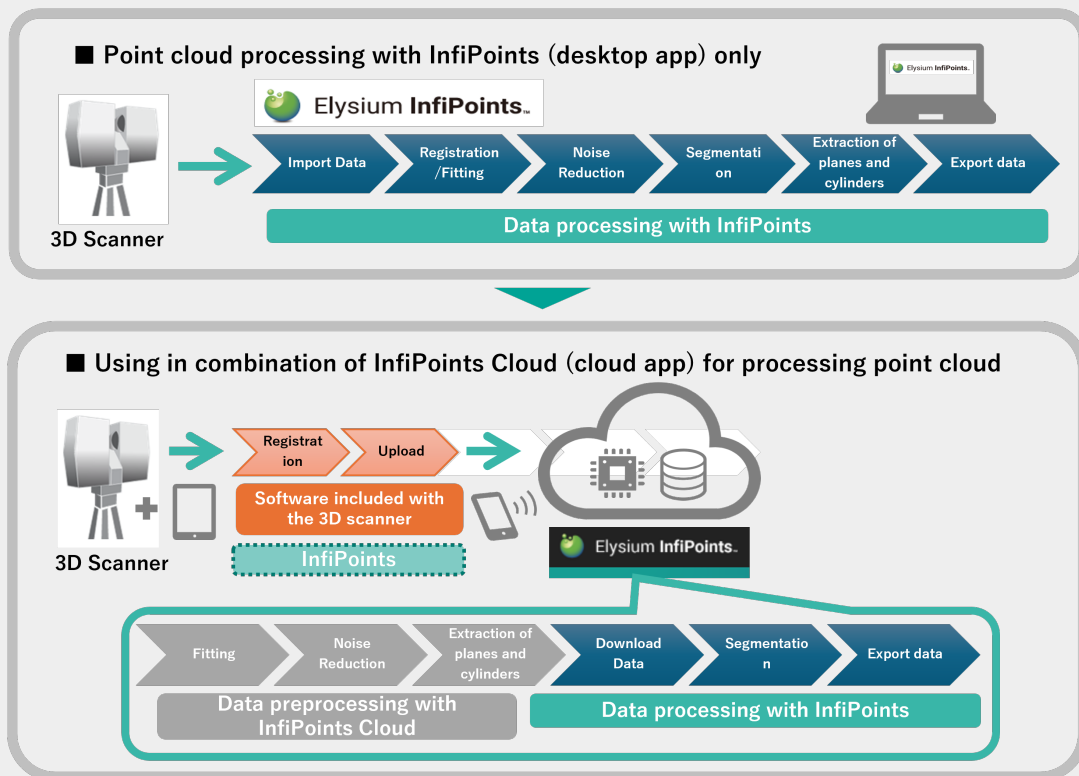


Point Cloud Pre-processing on InfiPoints Cloud

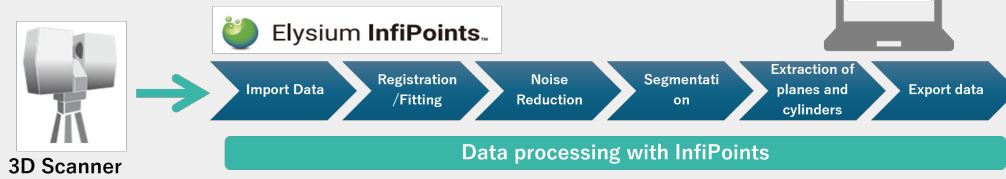
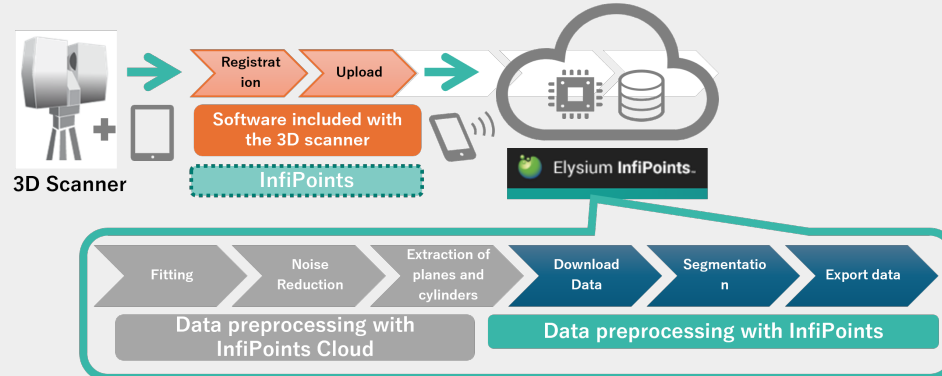
Automated Point Cloud Pre-processing on InfiPoints Cloud

Enhanced to upload the point cloud data to InfiPoints Cloud, and automate the point cloud pre-processing. InfiPoints Cloud has evolved from a data sharing platform to a gateway for cloud-based point cloud processing.

Customers with a valid maintenance contract for InfiPoints will have access to use all InfiPoints Cloud features within a specified usage limit.



The workflow processes will be as follows.

■ Point cloud processing with InfiPoints (desktop app) only**■ Using in combination of InfiPoints Cloud (cloud app) for processing point cloud**

1.2. Other Enhancements and Specification Changes

No.	Contents	Support ID
1	Enhanced the [Pipe]/[Plane]/[Structure]/[Duct] panels to support sorting by creation time or display name.	-
2	Enhanced to include the images from the scanner in Viewer File export when running [Output Creation] tab > [Viewer File] command with the 3D view set to the Panoramic View.	00075742 00075796 00075781
3	Enhanced to extend the range of polygon accuracy to generate more rough polygon models with [Generate Polygon from Point Cloud] > [Smoothly ignoring the noise] command.	-
4	Enhanced to support the point cloud data from NavVis VXL in texture creation for modeling elements using images from the scanner with [Create] > [Create from Image from Scanner (Selected Only)]/[Create from Image from Scanner (All)] command.	-
5	Added [Define the origin] > [By Selecting 1 Point] command to transform the coordinate system maintaining the X/Y/Z axes.	00077447 00072351
6	Added [Synchronize Coordinates With] command to synchronize the coordinates with other scans. Also enhanced to automatically synchronize coordinates when importing FLS files, based on the parent-child relationship among scans.	00071937
7	Added "Use as vertically upward direction" option for OBJ import and export to import/export specifying the vertical axis direction.	-
8	Added "Export in local coordinate system" option for OBJ export to export polygon models separately in each local coordinate system.	-
9	Enhanced to export in OBJ format including the polygon textures.	00059026 00066815 00066935 00067565 00073160
10	Enhanced to export in FBX format including the polygon textures.	00078612
11	Added "Align orientation with selected point/plane" option for [Create Clipping Box] command in [Clipping] panel to create Clipping Box aligning its orientation to a reference element (point or plane).	00072944

No.	Contents	Support ID
12	Added [Create Vertical Section on 2 Specified Points] command in [Section] panel to create a section that lies on two selected points.	00074918
13	<p>Changed the specification to maintain the settings on the 3D view rotation center when using the following commands:</p> <ul style="list-style-type: none"> - [Structure] tab > [Edit Structure] - [Create Clipping Box] in [Clipping] panel - "Hide elements outside Clipping Box" option in [Clipping] panel - "Hide elements outside section" option in [Section] panel 	00076944 00074097 00059818 00077138
14	Added a shortcut key to [How to Set Rotation Center] > [Auto (Auto-set Rotation Center)]	00076944 00074097 00059818 00077138
15	Enhanced to support the point cloud data without scan index in data unload with [Unload Point Cloud] command. This allows to exclude the point cloud data and use images from the scanner only when exporting projects or viewer files with [Output Creation] tab > [Project File]/[Viewer File]command.	-
16	Enhanced to apply gradation when highlighting points within Clipping Box or section with "Highlight points" option, or Zones with "Highlight points within selected Zone" option.	-
17	Enhanced to move the planes, piping/duct elements along their local X/Y/Z axis.	00067551
18	Changed the background color for drawing export to transparent.	00077864
19	Changed the specification so that scanner position icons are displayed at an appropriate size in Panoramic View.	00075742
20	Added "Create with specified side length" option for [Create Clipping Box] command in [Clipping] panel to create Clipping Box specifying the side length.	00072299
21	Added [Fit View]/[Hide Surroundings] commands to [Layer] panel to fit the view to the selected layer(s) and hide surroundings of the selected layer(s).	-
22	Added "Split files by Zone" option for point cloud export in text formats to export per Zone.	-

No.	Contents	Support ID
23	Changed the specification of [Pre-process] tab > [Smooth out Color Gap] command to exclude the points in hidden layers from the color source.	-
24	Added "Correct the rotation matrix when inaccurate" option for ZFS import to correct the rotation matrix when it is inaccurate.	00078240
25	Improved the user experience with [Plane] tab > [Move]/[Move Parallel] commands.	-
26	Enhanced to include the polygon color information in VRML export.	-
27	Added "Connect Others areas in piping" option to [Pre-process] tab > [Extract Planes and Pipes] command and [Import] > [Point Cloud] command for importing point cloud with scan index data (DotProduct, E57, FLS, PTX, ReCap, and ZFS) to select how to connect the Others areas in piping from with or without the Box.	-
28	Added the "Align to Z-axis from scanner" option for scan registration to specify whether to align to the Z-axis from the scanner or to the Z-axis at the time the command is run.	-
29	Changed the specification of primitive extraction to use points in shown layers only even for the areas where more points belong to hidden layers.	00057410 00060775
30	Enhanced to include the CAD models and polygon models in project merge with [Merge Project Files].	00080772
31	Added [Pipe] tab > [Piping Info (CSV)] command to export the piping information in CSV format.	
32	Added "Exclude hidden elements" option to "Save As" dialog for [Export] command in [Annotation]/[Dimension] panels to export the shown Notes/dimensions only.	-
33	Enhanced the commands to align planes to align multiple plane groups with the same reference, and include the isolated planes in the selectable planes. Also renamed [Align Plane Group] command to [Align: Selected Only].	-
34	Added [Export Point Cloud] command to the context menu in [Layer] panel to export point cloud in the selected layer(s) only.	-

No.	Contents	Support ID
35	Enhanced [Copy to New Point Cloud Part] command in [Layer] panel to support the multi-selection of the target layers. Also added "Merge all layers into one point cloud part" option to copy merging all selected layers.	-
36	Added "Extract handrails and fluorescent lights" option to [Pre-process] tab > [Extract Planes and Pipes] command.	-
37	Added [Auto-adjust] command to [Home] tab > [Set Display Color] command to adjust the display range of the intensity automatically based on the shown point cloud data.	-
38	Added [Cloud] tab, and added [Download] to download projects from InfiPoints and [InfiPoints Cloud] to open the InfiPoints Cloud.	-
39	Renamed [InfiPoints Cloud Uploader] to [InfiPoints Cloud Connect], and added a feature to download projects from InfiPoints Cloud.	-
40	Added "Upload including unloaded point cloud data" option to [Cloud] tab > [Upload] > [Another Project] command. This option is disabled by default.	
41	Added [Auto-mask] > [Human Figure] command to [Pre-process] tab > [Correct Point Cloud Color] command to detect and auto-mask the human figures in point cloud color for image inpainting.	-
42	Discontinued "Increase sampling points" option for primitive extraction from point cloud without scan index with [Pre-process] tab > [Extract Planes and Pipes] command, and added a slider to adjust the priority settings between prioritizing the fast processing or the extraction rate.	-
43	Discontinued "Target is a two-or-more-story building data" option for primitive extraction from point cloud without scan index with [Pre-process] tab > [Extract Planes and Pipes] command. In May 2025 Update or later, users will always be asked to specify the points for each floor level.	00080754
44	Enhanced the pipe extraction to increase the extraction rate of thin pipes and decrease the false extractions.	-
45	[InfiPoints for Revit] Changed the default decimal digits to the second decimal place for the display values of properties of structure elements.	00066271

No.	Contents	Support ID
46	[InfiPoints for Revit] Enhanced to export the duct elements in duct groups whose name contains "CableTray" as CableTray family in Revit.	00072753
47	[InfiPoints for Revit] Enhanced to support the angled walls and ceilings in data export to Revit.	00066971
48	[InfiPoints for SRD] Added commands to add new Scenes and update Scenes while viewing on SRD.	-

1.3. Fixed Issues

No.	Contents	Support ID
1	Fixed an issue that CAD model faces of DWG models might be unselectable.	00077010
2	Fixed to draw the image markers using the depth information.	-
3	Fixed an issue that InfiPoints abended upon the completion of point cloud or CAD import by dragging-and-dropping the file to "InfiPoints.exe", or specifying the input file by a command line argument.	-
4	Fixed an issue that CAD model faces were unselectable when they were shown in Wireframe.	-
5	Fixed an issue that the scan alignment failed when aligning point cloud groups that had a sub-group that contained hidden elements other than scan shots.	00070426
6	Fixed an issue that the aspect ratio of the image might have been broken when exporting an image of 3D View in Ortho View Model with [Output Creation] tab > [High Resolution Image]. Since May 2025 Update, the image will be adjusted by the height direction when the specified aspect ratio does not match that of the 3D View.	-
7	Fixed an issue that InfiPoints might have stopped responding when switching to Ortho View Mode if the project contained point cloud with very large coordinate values.	-
8	Fixed an issue that a wrong polygon face was selected when selecting a polygon face that was overwrapped with other polygon faces.	-
9	Fixed an issue that the center of the rotation was not applied correctly when applying a viewpoint saved as a Scene.	-
10	Fixed an issue that the value for [Settings on Data Registration: (Displayed during the data registration process only)] > "Show handles to move/rotate shot" option in [Front View] panel was not saved correctly	-
11	Fixed an issue where structure elements were not imported correctly with [Import] tab > [Merge Project Files] command. Please resave projects with May 2025 Update or later before merging.	-

2. Known Issues

No.	Contents
1	Please note that the performance of InfiPoints may decrease when the version of the installed driver for NVIDIA products is "361.75 (28.1.2016)" or later. As a workaround, apply "Workstation App - Dynamic Streaming" from [NVIDIA Control Panel] > [3D Settings] > [Manage 3D settings] > [Global Settings] > [Global presets].

3. Hardware Requirements

Elysium InfiPoints

CPU	Computer and CPU capable of running OS listed below
Memory	16 GB or more
OS	Windows 10 Pro 64-bit, Windows 11 Pro ^{*1}
Display	Display capable of minimum 1280 x 1024 with True Color capability
Graphic	<p>Video card that supports OpenGL^{*2} E.g., Quadro, GeForce</p> <ul style="list-style-type: none"> • Please note that the visualization of point clouds may be unsteady on the computer with integrated graphic controller. E.g., Intel HD Graphics • When used with a remote desktop connection, OpenGL may not work properly.

Elysium InfiPoints for VR

CPU	Intel i5-4590 equivalent or greater
Memory	8 GB or more
OS	Windows 10 Pro 64-bit, Windows 11 Pro ^{*1}
Graphic	NVIDIA GTX 1060 / AMD Radeon RX 480 or greater

- Please refer to "Elysium InfiPoints for VR Manual" for supported devices, hardware requirements, etc.
- For hardware requirements for VR devices, please refer to their respective official websites. (NVIDIA GTX 1060 or higher is recommended when using Elysium InfiPoints and Elysium InfiPoints for VR on the same computer.)

Elysium InfiPoints for Revit

Supported Versions	Revit 2024 [®] , Revit 2025 [®]
OS	Windows 10, Windows 11 ^{*1}
Supported Languages	Japanese, English

Other Requirements	In accordance with the system requirements of Revit 2024 [®] or Revit 2025 [®] .
--------------------	--

Elysium InfiPoints for Rhino

Supported Versions	Rhinoceros [®] 7, Rhinoceros [®] 8
OS	Rhinoceros [®] 7: Windows 10, Windows 11 ^{*1} Rhinoceros [®] 8: Windows 10, Windows 11 ^{*1}
Supported Languages	Japanese, English
Other requirements	In accordance with the system requirements of Rhinoceros [®] .

(*1) Windows[®] is a registered trademark of Microsoft Corp.
(*2) OpenGL[®] is a registered trademark of Hewlett Packard Enterprise.

All rights reserved by Elysium or the original author of this material.
The content may not be edited, reproduced, distributed, transmitted, displayed,
published, broadcast, sold or lent without the prior permission of the author.